



April - 21

TNPSC BITS

- ❖ Tamil Nadu Chief Minister inaugurated Sify Infinit Spaces Limited Owned South India's largest AI-ready data centre campus in Siruseri.
- ❖ India's sole Underwater Acoustic Test Facility (ATF) at Chennai's National Institute of Ocean Technology (NIOT) has been recognised as India's "Designated Laboratory" in the field of underwater acoustics under the International Bureau of Weights and Measures (BIPM), Paris.
- ❖ Mathew Samuel Kalarickal, eminent cardiologist, also recognised as the 'Father of Angioplasty' in India, passed away recently.
- ❖ Amrita Vidyalayam of Coimbatore has set 27 world records as part of the Amrita Vidyalayam World Records Festival 2025, an event organised to mark the school's 25th year of educational service.
- ❖ The United Arab Emirates (UAE) has been elected as the Chair of the INTERPOL Committee on Governance.
- ❖ The year-long campaign on maternal and newborn health, titled as the Healthy beginnings, hopeful futures, was launched on World Health Day (7th April).
- ❖ The Maharashtra government will rename Khultabad, the historic town housing Mughal emperor Aurangzeb's tomb, to 'Ratnapur'.

TAMIL NADU NEWS

New Tourism Projects 2025



- ❖ The New eco-tourism and infrastructure development projects worth over Rs 200 crores across Tamil Nadu was announced during the demand for grants in the Assembly.

- ❖ The government also plans to invest Rs 100 crore to modernise major religious tourism destinations across Tamil Nadu, including Mamallapuram (Rs 30 crore), Kanniyakumari (Rs 20 crore), Tiruchendur (Rs 30 crore), and Velankanni and Nagore in Nagapattinam district (Rs 20 crore).
- ❖ The state will also set up the cultural heritage centres to showcase TN's Buddhist and Jain legacies, in Kancheepuram and Madurai respectively.
- ❖ The Kalvarayan Hills in Kallakurichi district, Gomuki and Manimuktha dams, and the Karumandurai Farm Lake in Salem district will also be developed with improved infrastructure for tourists.

12 protected sites of Tamilnadu



- ❖ A total of 12 historically significant locations will be declared as the protected monuments/sites.
- ❖ The following locations to be declared protected monuments/sites:
 - The Tamil inscriptions in Mannarkoil in Tirunelveli district,
 - rock-cut caves in Aralipatti in Sivagangai district,
 - Koothapoondiyan Valasu in Dindigul district,
 - V. Kottaiyur in Pudukkottai district,
 - Dolmens in Mallachanthiram in Krishnagiri district,
 - The palace in Thirupullani in Ramanathapuram district
 - The Maraiyur Choultry in Narikkudi and boulder and cave paintings in Meenakshipuram in Rajapalayam taluk,
 - The old mandapams in Mamsapuram and in Pillayar Natham —Virudhunagar district
 - Avoor in Tiruvannamalai district, and



- Nayanur in Villupuram district
- ❖ A museum for inscriptions would be set up on the World Tamil Sangam campus in Madurai.

Elevated levels of mercury

Trace inorganic Contaminants	USEPA (mg/L)	Indian Standards (mg/L)
Arsenic, as As	0.05	0.05
Cadmium, as Cd	0.005	0.01
Chromium, as Cr(VI)	0.05	0.05
Iron, as Fe	0.3	0.3
Lead, as Pb	0.05	0.1
Manganese, as Mn	0.05	0.1
Mercury, as Hg	0.002	0.001
Nickel, as Ni	0.1	0.05

- ❖ The Tamil Nadu Pollution Control Board (TNPCB) on the directions of the National Green Tribunal (NGT), Southern Zone, conducted a study recently.
- ❖ The result has shown the elevated levels of mercury in waterbodies located near Mines I, 1 A and II and Thermal Power Station II of NLC India Limited (NLCIL).
- ❖ The concentration of total mercury was found to be above the permissible limits of drinking water standards in the range of 0.0012 mg/l to 0.115 mg/l in 15 out of 17 surface water samples.
- ❖ In Buckingham canal, one of the sites where water samples were collected, the concentration of mercury was found to be 115 times more than the permissible limit.
- ❖ Similarly, in the groundwater samples, the presence of mercury was found to be in the range of 0.0025 mg/l to 0.0626 mg/l, an increase of 2.5 to 62 times than the permissible limits.

NATIONAL NEWS

India's Participation in Global Value Chains

- ❖ NITI Aayog has released a report titled the 'Automotive Industry: Powering India's Participation in Global Value Chains'.
- ❖ The report outlines India's Global Value Chain (GVC) potential in the automotive sector and highlights strategic pathways for global leadership.
- ❖ The Automotive Sector contributes 7.1% to India's GDP and 49% to the manufacturing GDP.

- ❖ India's current share in globally traded auto components is approximately 3% or 20 billion.
- ❖ EVs are reshaping manufacturing priorities, with China producing over 8 million EVs in 2023.



Niveshak Didi Initiative - Phase 2



- ❖ The Investor Education and Protection Fund Authority (IEPFA) and India Post Payments Bank (IPPB) has launched Phase 2 of the “Niveshak Didi” initiative.
- ❖ This strategic collaboration aims to scale financial literacy among women in rural, semi-urban, and underserved areas through grassroots mobilization and community-driven education.
- ❖ “Niveshak Didi” is a unique initiative that trains the women postal workers and community leaders to act as financial educators within their local regions.

- ❖ During Phase 1, more than 55,000 beneficiaries participated in IPPB Financial Literacy Camps across India.

M-CADWM scheme

- ❖ The Union Cabinet approved the 'Modernisation of Command Area Development and Water Management (M-CADWM)' as a sub-scheme of the Pradhan Mantri Krishi Sinchayee Yojana (PMKSY).
- ❖ This initiative, with an initial outlay of ₹1,600 crore, is set to run from 2025-2026.
- ❖ It is designed to significantly enhance the irrigation infrastructure in India.

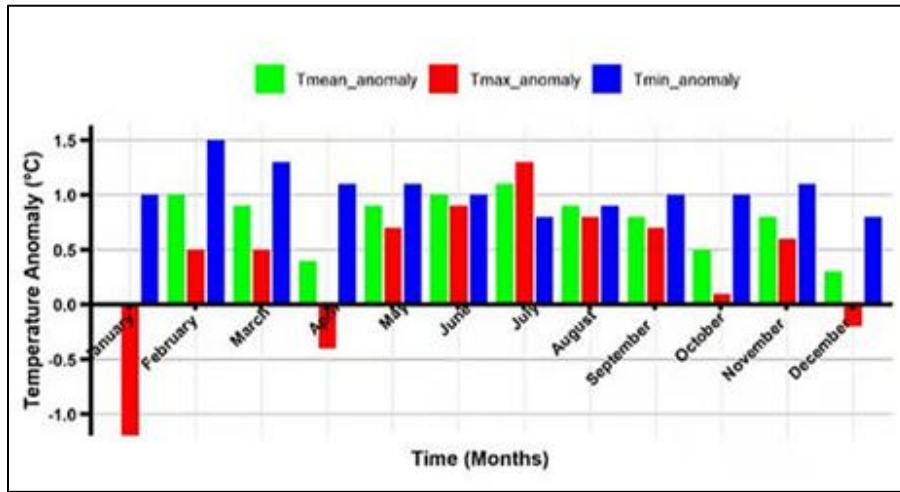


INTERNATIONAL NEWS

Tanzania - Hottest Year Ever in 2024

- ❖ In 2024, Tanzania experienced its hottest year on record, marked by sharply rising nighttime temperatures.
- ❖ The country's average annual minimum temperature, a key indicator of nighttime warmth, reached 19.3°C, which was 1.1°C higher than the long-term average.
- ❖ This increase has outpaced the rise in maximum temperatures, which stood at 28.8°C, just 0.4°C above average.
- ❖ Across the most of the country, maximum temperatures were 0°C to 1°C above average.
- ❖ The national average temperature for 2024 reached 24.3°C, 0.7°C above normal.
- ❖ It is surpassing the previous record set in 2023 and marking the highest since records began in 1970.

- ❖ The year was also Tanzania's fourth wettest since 1970 and the wettest in two decades, with total rainfall reaching 1,307.6 mm, 285.2 mm (28 per cent) above average.



ECONOMY NEWS

India's Trade Dynamics in FY25

Figs in \$bn		Trade	Surplus/ deficit
FY24	Exports		
US	77.5	119.7	35.3
China	16.7	118.4	-85
UAE	35.6	83.6	-12.4
FY25	Exports	Imports	
US	86.5	131.8	41.2
China	14.3	127.7	-99.1
UAE	36.6	100	-26.8

- ❖ The top three countries with which India trades remained unchanged, with the US on top, followed by China.
- ❖ During the last fiscal year, with the US, India saw its exports rise by 11.6% to \$86.5 billion.
- ❖ Imports to US rose at a slower pace of 7.4% to \$45.3 billion, resulting in a higher trade surplus of \$41 billion.

- ❖ India's trade deficit with China neared the \$100 billion mark, due to a fall in exports to \$14.2 billion.
- ❖ China is now India's fifth biggest export destination, slipping one place as the UK rose to number four.

ENVIRONMENT NEWS

Population study of grizzled giant squirrel



Tamil Nadu Endangered Species Fund (TNESF) - Lesser Known Species Grizzled Giant Squirrel (*Ratufa macroura*)

Grizzled Giant Squirrel (*Ratufa macroura*)

- **Habitat:** Riparian forests and riverine habitats in the Western Ghats, primarily found in the regions of Srivilliputhur, Meghamalai, and the Palani Hills.
- **Numbers:** Fewer than 5000 (As per latest estimation)
- **Characteristics:** Diurnal, Arboreal, and Herbivorous rodents. They have a distinctive grizzled gray and white fur, with a bushy tail that is almost as long as their body.
- **Role in Ecosystem:** They play a crucial role in seed dispersal and maintaining the health of forest ecosystems. Their feeding habits help in the growth and propagation of various plant species
- **Threats:** Habitat loss due to deforestation and human encroachment, hunting for their fur and meat, and predation by domestic animals.
- **IUCN Status:** Near Threatened

DIPR

வெளியீடு: இயக்குநர், வையுழி மக்கள் தொடர்புத்துறை





tndiprnews | tndipr | tndipr | TN DIPR | www.diprtn.gov.in | TNDIPR, Govt. of Tamil Nadu

- ❖ The Villupuram Forest Division has planned to conduct a population study of the grizzled giant squirrel found in good numbers in the Pakkamalai and the Gangavaram hills.
- ❖ The grizzled giant squirrel is usually known to nest in the Western Ghats in the Southern India ranging from Chinnar Wildlife sanctuary in Kerala to Anamalai Tiger Reserve and Palani hills in Tamil Nadu.
- ❖ The species has been categorised as near threatened by the Red List and listed under Schedule II of CITES.

- ❖ The squirrel, an endangered species, is listed under Schedule I of the Wildlife Protection Act, 1972.

STATES' NEWS

Telangana - Heatwave as State-Specific Disaster

Heat wave Scenario		40°C	30°C
Maximum Temperature		Plains	Hills
Heat wave conditions prevail when...		Severe heat wave conditions prevail when....	
Normal maximum temperature	Deviation from normal	Normal maximum temperature	Deviation from normal
Above		Above	
40°C	4-5°C or more	40°C	6°C or more
At or below		At or below	
40°C	5-6°C or more	40°C	7°C or more

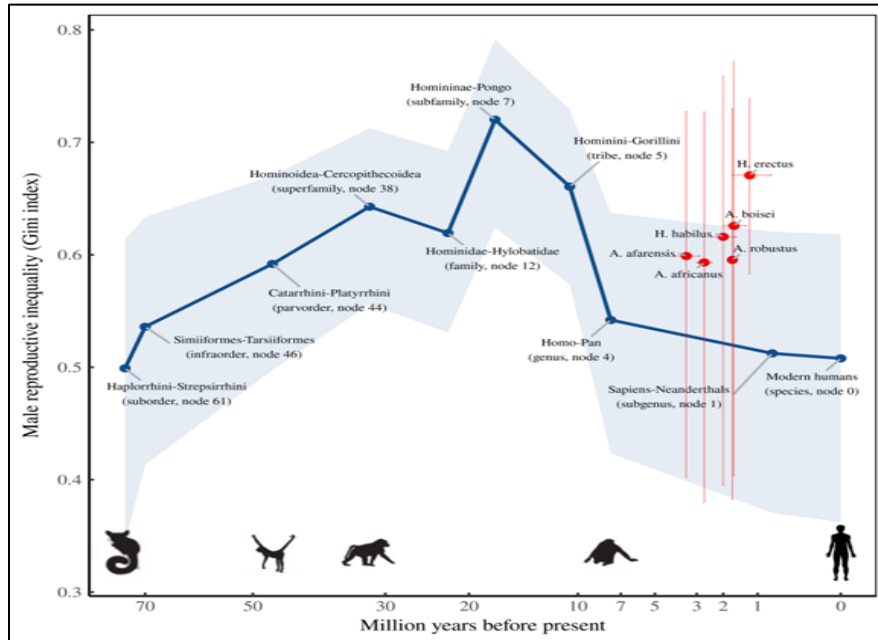
- ❖ The Telangana government has declared heatwaves and sunstroke conditions as “state-specific disaster”.
- ❖ It also announced an ex-gratia of ₹4 lakh to the families of the victims of such a disaster from the state disaster relief fund (SDRF).
- ❖ During the year 2024, it was observed that except five districts, all the remaining 28 districts had at least 15 days of heat waves.
- ❖ The heatwave definition was provided by the India Meteorological Department.
- ❖ A few other states such as Tamil Nadu, Kerala, and Madhya Pradesh have already declared heatwaves as state-specific disaster.

MISCELLANEOUS NEWS

Inequality in Human Settlements

- ❖ The New archaeological evidence suggests the economic inequality has existed for over 10,000 years.
- ❖ The researchers analysed material inequality and persistence in a global dataset of archaeological settlements by covering the data from over 2,990 archaeological sites around the world.

- ❖ They calculated the Gini coefficient — a common measure of economic inequality ranging from 0 (perfect equality) to 1 (maximum inequality) — for each site.
- ❖ An economic inequality refers to the unequal distribution of wealth and resources among individuals or groups.



★ ★ ★ ★ ★ ★ ★ ★ ★ ★