

April - 24

TNPSC BITS

- ❖ DRDO developed the AI-powered Prajna system and handed it to the Ministry of Home Affairs for real-time monitoring, surveillance, and threat detection.
- ❖ Observer Research Foundation (ORF) and Research and Information System for Developing Countries (RIS) launched the inaugural BRICS Academic Forum in New Delhi to strengthen policy dialogue and global cooperation.
- ❖ The foundation stone of India's first Petroglyph Conservation Park was laid in Ladakh, on the banks of the Indus River, to protect ancient rock carvings called petroglyphs (prehistoric carvings on rocks), as Ladakh has around 400 such sites.
- ❖ British zoologist, author, and television presenter Desmond Morris died at the age of 98 in Ireland, and his famous book 'The Naked Ape' explained humans as part of the animal kingdom.
- ❖ India participated in the World Border Security Congress 2026 held in Vienna, Austria, focusing on maritime security, coastal surveillance, transnational threats, and emerging technologies to strengthen global border management cooperation.
- ❖ International Sculpture Day is observed on April 24, 2026 (last Saturday of April) to promote awareness and appreciation of sculpture as a form of visual art.

NATIONAL NEWS

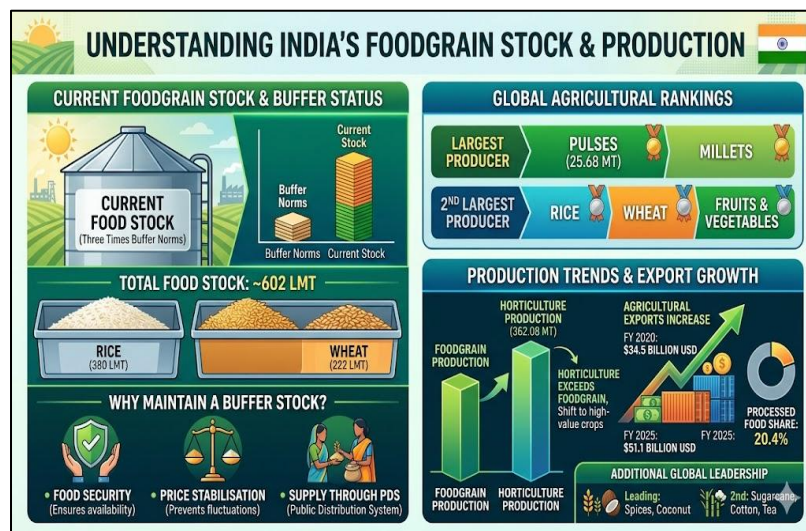
New Deportation Policy for Illegal Migrants



- ❖ The Ministry of Home Affairs (MHA) introduced a new deportation policy to speed up the identification and removal of illegal migrants.

- ❖ It mandates district-level task forces and a 90-day timeline for verification of suspected foreign nationals.
- ❖ Holding centres with basic facilities will be set up, ensuring families are not separated.
- ❖ Illegal documents will be cancelled, and migrants will be blacklisted by the Bureau of Immigration.
- ❖ The policy is backed by the Immigration and Foreigners Act, 2025, which strengthens enforcement and monitoring.

India's Foodgrain Stock and Production



- ❖ The government reported that India's foodgrain stock is three times the buffer norms.
- ❖ India has a total food stock of about 602 lakh metric tonnes (LMT), including 222 LMT wheat and 380 LMT rice.
- ❖ Buffer stock is maintained by the government to ensure food security, price stabilisation, and supply through the Public Distribution System (PDS).
- ❖ India is the largest producer of pulses (25.68 million tonnes (MT)) and millets, and 2nd largest producer of rice, wheat, fruits and vegetables.
- ❖ Horticulture production reached 362.08 MT, exceeding foodgrain output, showing a shift to high-value crops.
- ❖ Agricultural exports increased from 34.5 billion United States dollars (USD) in Financial Year (FY) 2020 to 51.1 billion USD in FY 2025, with processed food share at 20.4%.
- ❖ India is also leading in spices and coconut production, and ranks 2nd in sugarcane, cotton, and tea production.

ECONOMY NEWS

E-Mandate Framework 2026

- ❖ The Reserve Bank of India has issued the new Digital Payments E-Mandate Framework 2026.
- ❖ The framework standardises rules for recurring digital payments across cards, Unified Payments Interface (UPI) and prepaid payment instruments.
- ❖ Customers must complete one-time registration with Additional Factor of Authentication (AFA).
- ❖ Recurring payments up to ₹15,000 can be done without AFA; for insurance, mutual funds and credit cards, the limit is ₹1 lakh.
- ❖ Banks must send pre-debit notification 24 hours before the transaction and allow the opt-out option.
- ❖ No charges will be levied for using the e-mandate facility, improving transparency in digital payments.

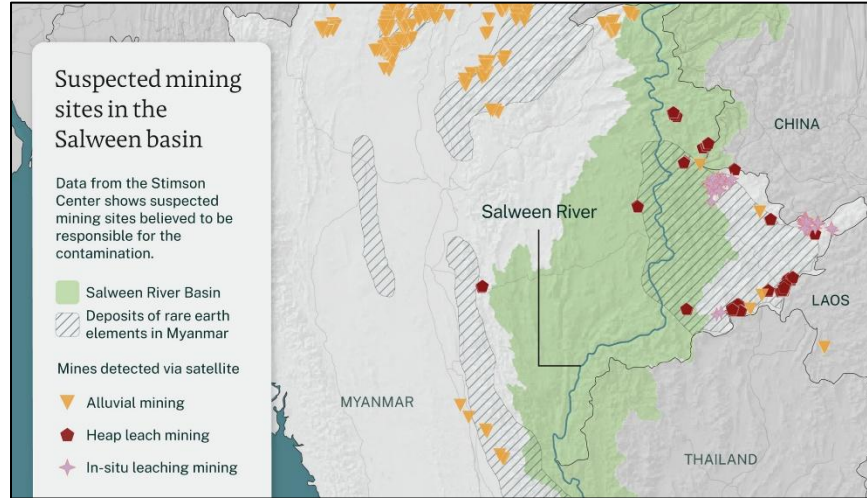


ENVIRONMENT NEWS

Arsenic Pollution in the Salween River

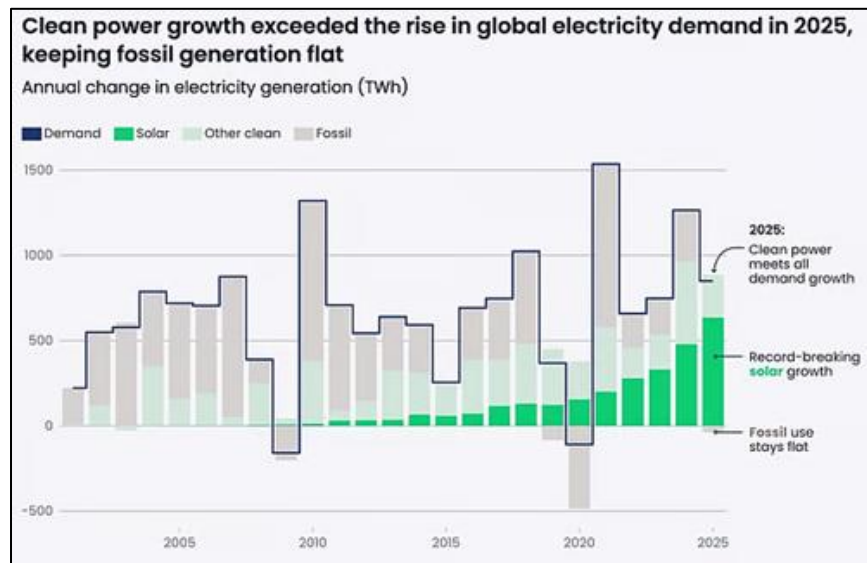
- ❖ The Salween River, also known as the Nu River in China, shows high arsenic contamination above safe limits.
- ❖ The Salween River is Asia's longest free-flowing (undammed) river, stretching about 3,300 km.
- ❖ Arsenic levels exceed the World Health Organization safety limit of 0.01 milligram per litre (mg/L), reaching up to 0.554 mg/L in some areas.
- ❖ Pollution is mainly due to unregulated mining activities in Myanmar's Shan State.

- ❖ Around 127 mining sites were identified in the basin, including rare earth and gold mining operations.
- ❖ Methane and heavy metal pollution threaten biodiversity and local communities depending on the river.



REPORTS AND INDICES

Global Electricity Review 2026



- ❖ The Ember report highlights major global electricity trends and clean energy growth in 2025.
- ❖ Renewable energy met all new electricity demand growth in 2025, stopping the increase in fossil fuel generation.

- ❖ Solar power grew by 636 terawatt-hours (TWh) to 2,778 TWh and met 75% of the 849 TWh demand rise.
- ❖ Renewables reached 33.8% share, surpassing coal (33.0%) for the first time in 100 years.
- ❖ Fossil fuel generation declined by 38 TWh, with major drops in China (-56 TWh) and India (-52 TWh).
- ❖ India's renewable generation increased by 98 TWh, with solar adding 53 TWh and wind 22 TWh.
- ❖ India's electricity demand rose by 49 TWh, while coal generation declined by about 44 TWh.

Top Methane Emitting Landfills 2025

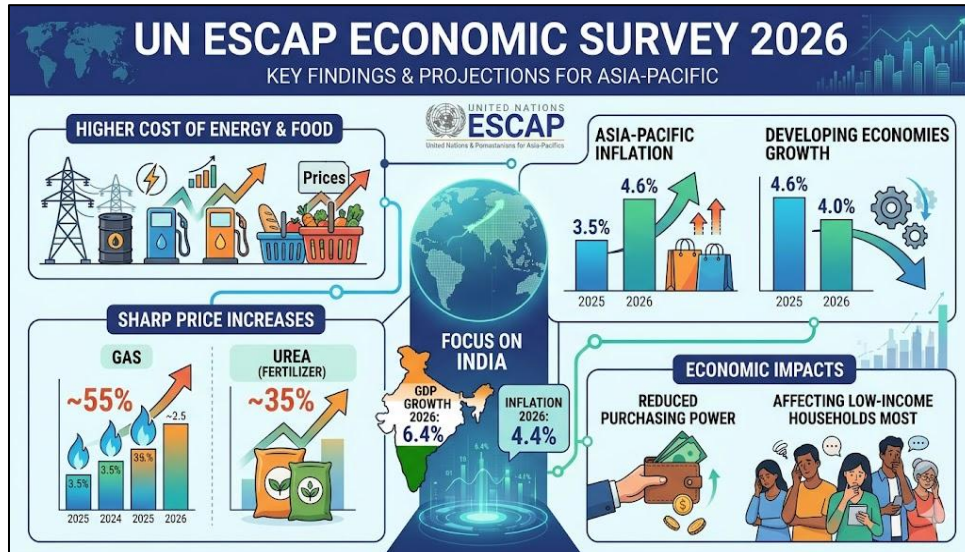


**Telangana and Mumbai landfills
are among top methane emitters
in the world**

- ❖ The “Spotlight on the Top 25 Methane Plumes in 2025: Landfills” report, released by the University of California, Los Angeles, identified the top global methane-emitting waste sites.
- ❖ Report lists 25 landfill sites across 18 countries with the highest methane emissions (3.6–7.6 tonnes/hour), based on satellite data.
- ❖ India's Jawahar Nagar landfill in Telangana (5.9 tonnes/hour) ranked 4th, and Kanjurmarg landfill in Mumbai (4.9 tonnes/hour) ranked 12th globally.
- ❖ Data analysed nearly 3,000 methane plumes from over 700 waste sites using satellites like NASA EMIT and Carbon Mapper.
- ❖ Landfills contribute about 20% of global methane emissions, making them a key target for climate action.

- ❖ Methane is 86 times more heat-trapping than carbon dioxide (CO₂) and causes over 45% of recent global warming.

UN ESCAP Economic Survey 2026



- ❖ The United Nations Economic and Social Commission for Asia and the Pacific released its 2026 Economic Survey, highlighting rising energy and food costs.
- ❖ Inflation in Asia-Pacific is projected to rise to 4.6% in 2026 from 3.5% in 2025.
- ❖ Economic growth in developing economies is expected to slow to 4.0% from 4.6%.
- ❖ Energy, gas and fertilizer prices increased sharply, with gas up ~55% and urea up ~35%.
- ❖ India's Gross Domestic Product (GDP) growth is projected at 6.4% in 2026 with inflation at 4.4%.
- ❖ Rising costs may reduce purchasing power and affect low-income households the most.

IMPORTANT DAYS

World Day for Animals in Laboratories 2026 - April 24

- ❖ It is observed every year to raise awareness about the use of animals in laboratories and to promote non-animal alternatives.
- ❖ Laboratory animals are used in biomedical research, drug testing, and cosmetics to study diseases and treatments.
- ❖ Animals like mice are used because they share more than 98% DNA with humans.

- ❖ Alternative methods include computer algorithms, organs-on-chips, and microdosing techniques.



National Panchayati Raj Day 2026 - April 24

- ❖ The day marks the implementation of the 73rd Constitutional Amendment Act, 1992, which gave constitutional status to Panchayati Raj Institutions.
- ❖ The amendment came into force on April 24, 1993, adding Part IX (Articles 243 to 243O) to the Constitution of India.
- ❖ It promotes local self-government through a three-tier system: Gram Panchayat (village), Panchayat Samiti (block), and Zila Parishad (district).
- ❖ It also ensures reservation for women and Scheduled Castes (SC) and Scheduled Tribes (ST) in local bodies.

