

August - 13

## TAMIL NADU

### Epigraphist S. Rasu (85)



- ❖ Epigraphist, archaeologist and Tamil scholar 'Pulavar' S Rasu passed away in Coimbatore.
- ❖ He born in 1938 at Vellode in Chennimalai union near Erode.
- ❖ Pulavar S. Rasu identified Kodumanal village as the one mentioned as 'Kodumanam' as inscribed in Padhitrupathu of Sangam literature.
- ❖ Following his identification, excavations began for the first time in 1985.
- ❖ It brought to light two cultural periods – megalithic and early historic.
- ❖ The Tamil Nadu government had in 2012 presented the U.V. Swaminatha Iyer Award to the poet for his contribution as Tamil scholar.

### Chennai City Partnership

- ❖ The World Bank is set to provide funding for projects aimed at creating safe and efficient streets in Chennai as part of the second phase of the Chennai City Partnership.

- ❖ It is for promotion of urban mobility and spatial development with the timeline of 2022-2027.
- ❖ It will also be enhancing the city's digital infrastructure for e-mobility and smart parking solutions.



## NATIONAL

### Justice Rohini panel's findings

CENTRAL GOVT EMPLOYEES BY SOCIAL CATEGORY						
	TOTAL	SC	ST	OBC	EWS	OTHERS
Group-A	50,068	6,440 (12.86%)	2,826 (5.64%)	8,455 (16.88%)	11 (0.02%)	32,226 (64.58%)
Group-B	1,25,732	20,954 (16.66%)	8,244 (6.55%)	19,829 (15.77%)	5 (0.04%)	76,700 (61.0%)
Group-C (excluding safai karmacharis)	3,22,503	58,744 (18.22%)	22,296 (6.91%)	72,710 (22.54%)	84 (0.03%)	1,68,639 (52.29%)
Group-D (safai karmacharis)	13,722	4,507 (32.72%)	1,056 (7.66%)	2,774 (20.14%)	0	5,435 (39.46%)
TOTAL	5,12,075	90,675 (17.70%)	34,422 (6.72%)	1,03,768 (20.26%)	100 (0.02%)	2,83,110 (55.28%)

- ❖ The Justice G. Rohini-led Commission was established in 2017.
- ❖ It was to explore the sub-categorization of Other Backward Classes (OBC) groups.
- ❖ It was appointed by the President under the powers conferred by Article 340 of the Constitution.
- ❖ Major Findings

- ❖ **The Dominance of Few Caste Groups:** A small number of caste groups among all OBC groups were found to dominate the reservation quotas meant for OBCs.
- ❖ **Equitable Redistribution:** The need to ensure a more equitable distribution of benefits among OBC communities was identified, aiming to address the imbalance caused by the dominance of certain groups.
- ❖ **Reservation Allocation Formula:** The Commission formulated a formula to allocate reservation shares based on historical underrepresentation, with the objective of providing a larger share to historically marginalized groups and reducing the share of dominant groups.
- ❖ **Rationalization of Central OBC List:** The Commission suggested corrections and replacements in spellings within the Central OBC list, aiming to rectify errors and inaccuracies in the entries.

## State of Elementary Education in Rural India 2023

### Aspiring for higher education

The table shows parental expectations of a child's educational attainment. About 78% of parents aspire for their girls to attain graduation or higher degrees



**Dropping out:** Parents of a section of girls said their daughters dropped out of school to help out in the family's earnings R. RAGU

Expected level of education of child	Boy (%)	Girl (%)	Total (%)
Up to elementary	4.4	3.9	4
Up to secondary	2.4	2.8	3
Higher secondary	11.1	15.2	13
Graduation	49.6	50.3	50
Postgraduation/Ph.D.	32.5	27.8	30

■ About 80% of parents aspire for their children to become graduates or attain higher degrees

■ The survey included responses of 6,229 parents across 21 States of India.

- ❖ Recently, the Ministry of Education has released this report for the first time in India.
- ❖ The study was focused on children in rural communities between the age of 6 to 16 years.
- ❖ It was highlighting the Prevalence of Smartphone Usage among students.
- ❖ It was based on a survey conducted by the Development Intelligence Unit (DIU), a collaboration between NGO Transform Rural India and Sambodhi Research and Communications.
- ❖ According to the survey, one-fourth of male children dropped out of school during primary schooling.

- ❖ The dropout rate at this stage was higher for female children at nearly 35 per cent.
- ❖ Major findings
- ❖ 49.3% have access to smartphones.
- ❖ In contrast, only 34% of students use smartphones for study-related downloads.
- ❖ Students in higher classes (Class VIII and above) have greater access to smartphones (58.32%).
- ❖ 78% of parents aspire for their children to attain graduation-level education or above.

## INTERNATIONAL

### G20 EMPOWER Tech Equity Digital Inclusion Platform

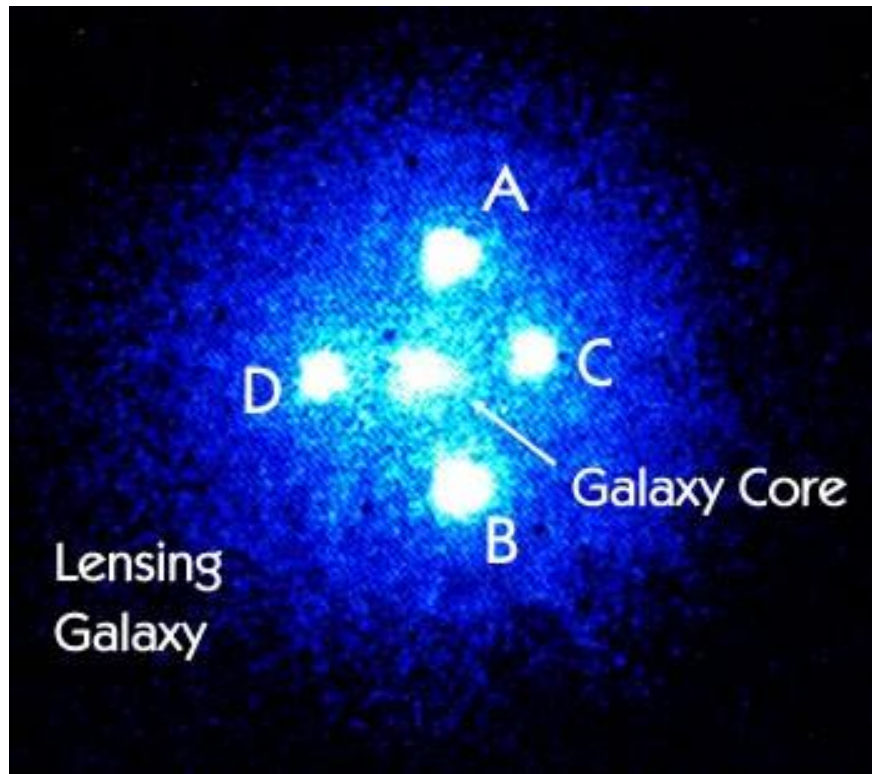


- ❖ India will launch Tech Equity - a digital inclusion platform.
- ❖ It seeks to bridge the gender digital divide G20 EMPOWER summit held in Gandhinagar.
- ❖ The platform is available in over 120 languages and offers digital skilling courses for women across G20 nations.
- ❖ The platform is to be funded by India for the next three years.
- ❖ It will be maintained by Federation of Indian Chambers of Commerce & Industry (Ficci).

- ❖ The summit was organized around the theme ‘Women-Led Development: ensuring a sustainable, inclusive, and equitable global economic growth’.
- ❖ EMPOWER is the G20 Alliance for Empowerment and Progression of Women's Economic Representation that was launched in 2019.

## SCIENCE AND TECHNOLOGY

### Einstein crosses



- ❖ This event was first predicted by Albert Einstein in 1915 as a consequence of his theory of general relativity.
- ❖ The Einstein Cross is a fascinating astronomical phenomenon.
- ❖ It was discovered in 1985 by a team of astronomers led by Dennis Walsh.
- ❖ It is also known as Q2237+0305, located in the constellation Pegasus.
- ❖ It had a redshift of  $z= 1.7$ .
- ❖ That makes it one of the most distant known quasars.
- ❖ The phenomenon was named the “Einstein Cross” due to the cross-like pattern.
- ❖ The pattern was created by the four bright images of the quasar around the lensing galaxy.

- ❖ In this case, a foreground elliptical galaxy, has distorted and split a beam of light from a background galaxy about 11 billion light-years away.
- ❖ That elliptical galaxy is located around 6 billion light-years from Earth.
- ❖ The lens responsible for the Einstein Cross's stunning display was recently developed in 2021 by the Dark Energy Spectroscopic Instrument at Kitt Peak National Observatory in Arizona, USA.

## **Maya Operating System**



- ❖ The defence Ministry introduces an indigenously developed operating system, Maya OS.
- ❖ It is an innovative operating system crafted by the Union Ministry of Defence to fortify its computer systems against cyberattacks.
- ❖ It stands on the open-source Ubuntu platform, utilizing freely available software.
- ❖ Notably, Maya OS aims to replicate the interface and functionalities of Windows OS.
- ❖ Maya OS boasts a feature named Chakravyuh, an end-point anti-malware and antivirus software.
- ❖ Maya OS will be implemented on all ministry computers by the end of the year.
- ❖ Ubuntu is one of the most widely used Linux distributions in the world.
- ❖ And it is known for its high level of security.
- ❖ Windows has a large number of malware and vulnerabilities due to running more services and its backwards compatibility,

- ❖ But Ubuntu has very few malwares and exploits.

## ENVIRONMENT

### First-ever centre for species survival in South Asia

- ❖ IUCN Species Survival Commission has partnered with Wildlife Trust of India (WTI) to set up the first-ever Center for Species Survival in South Asia.
- ❖ This will be the 10th Centre for Species Survival in the world and the first of its kind in South Asia.
- ❖ India has great variety of fauna, numbering 92,037 species, of which insects alone include 61,375 species.
- ❖ About two times that number of species still remain to be discovered in India alone.
- ❖ It is with a vision to create a just world that values and conserves nature.
- ❖ This collaborative effort aims to enhance conservation efforts by wildlife experts and specialist groups and safeguard the rich biodiversity of India.

