

January - 02

TAMIL NADU

Ban on Mobile in Temples



- ❖ In order to maintain the “sanctity and purity” of places of worship, the Madurai bench of the Madras High Court directed the Tamil Nadu government to ban the use of mobile phones in temples across the state.
- ❖ The judges observed that there cannot be any dispute that under Article 25 of the Constitution, all persons are entitled to freely profess, practice and propagate religion.
- ❖ According to the rules of the Tamil Nadu Temple Entry Authorization Act, 1947, trustees or any authority in-charge of the temple can make regulations for the maintenance of order and decorum on the premises.
- ❖ In its order, the court cited the ban on mobile phones in the Sri Krishna temple in Guruvayur, Meenakshi Sundaeswarar temple in Madurai, and Sri Venkateswara temple in Tirupati.
- ❖ There are separate security counters in each of these temples to deposit mobile phones before entering the premises.

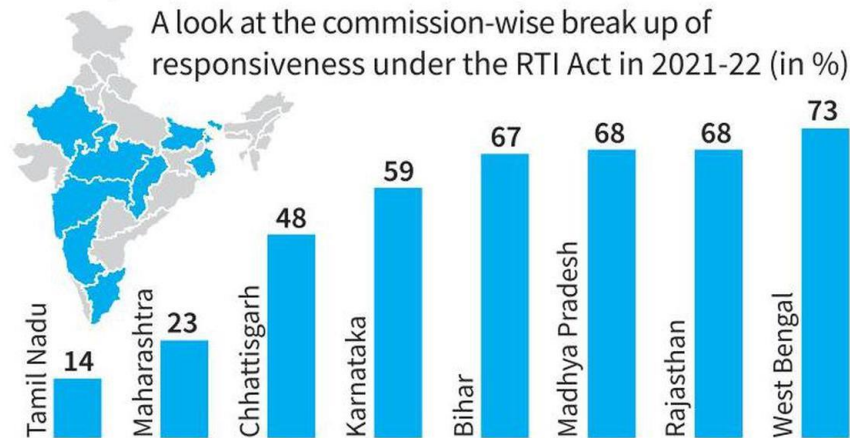
NATIONAL

Performance of Information Commission (ICs)

- ❖ The State Information Commission of Tamil Nadu has the lowest performance of responsiveness under the RTI Act.

- ❖ It was with only up to 14% of the information sought out of 29 information commissions across the country.
- ❖ Maharashtra was second lowest with sharing only 23% of the information asked for.
- ❖ Uttar Pradesh and Andhra Pradesh returned around 40% of the appeals or complaints received by them.

Report card



Remote Electronic Voting Machine (RVM)

What is an RVM?

The machine allows migrant voters living outside their home constituencies to vote from their current residence

- The remote voter must register online/offline within a pre-notified time before the elections with their home constituency Returning Officer
- After successful verification at their home constituency, the voter will be approved for the remote voting facility
- Booths will be set up near their current homes



EVMs being sealed after an election

- In an RVM, a single ballot unit can cater to many constituencies at a single polling station by using dynamic ballot display instead of the usual printed paper ballot sheet

- ❖ The election Commission of India (ECI) has developed a prototype for the Remote Electronic Voting Machine (RVM) aimed to facilitate voting for domestic migrants across India.



- ❖ The RVM will be a stand-alone system, not connected to the internet, and based on existing electronic voting machines.
- ❖ The goal of the RVM is to increase voter participation and make it easier for domestic migrants to participate in elections.
- ❖ The RVM is a multi-constituency electronic voting machine that can handle up to 72 constituencies from a single remote polling booth.
- ❖ It is based on the time-tested M3 (Mark 3) EVMs and will be used to enable voting at remote polling stations for domestic migrants.
- ❖ The Representation of the People Act, 1950 and 1951, The Conduct of Election Rules, 1961, and The Registration of Electors Rules, 1960 will need to be amended to introduce remote voting.

Triple Test Survey on Reservation

**Reservation
of Other
Backward
Classes
(OBCs) in
the Uttar
Pradesh
urban local
body
elections**

The UP government drafted notification for the reservation of Other Backward Classes (OBCs) in the urban local body elections based on the rapid survey it conducted.

The Allahabad High Court ordered the UP government to hold urban local body elections without reservation for OBCs as the 'triple test' requirement for it had not been met.

After the Allahabad High Court quashed draft poll notification, the UP Government appointed a 5 member commission to conduct triple test.

- ❖ The Allahabad High Court had ordered the Uttar Pradesh Government to conduct urban local body elections without the OBC reservations.
- ❖ Because the “triple test” requirement for the quota has not been fulfilled.
- ❖ The Supreme Court put forth the triple test in the case *Vikas Kishanrao Gawali vs. State of Maharashtra and others* in 2021.
- ❖ It involves the government implementing three tasks to finalize the reservation to the OBCs in the local bodies.
- ❖ These tasks are
 - To constitute a dedicated commission to conduct a rigorous empirical study into the nature and implications of the backwardness in local bodies

- To specify the proportion of reservation required in local bodies based on the commission's recommendations
- To ensure that the reservations for SCs, STs and OBCs together do not surpass the aggregate of 50 percent of the total seats.

INTERNATIONAL

Stay Safe Online Campaign

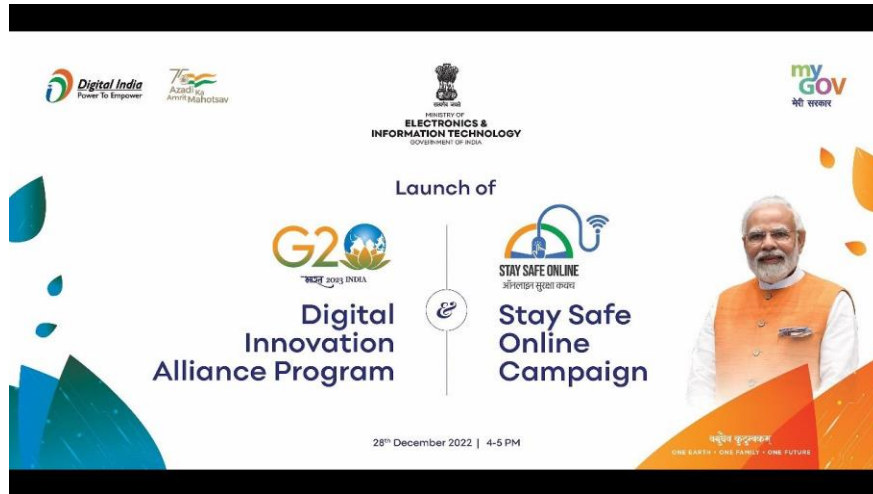


- ❖ It was launched recently as part of India's G20 presidency.
- ❖ It aims to raise awareness about the importance of staying safe in the online world amid the increasing dependence on the internet.
- ❖ The Stay Safe Online Campaign seeks to make citizens aware about the various cyber risks and ways to address them.

G20 Digital Innovation Alliance (G20-DIA)

- ❖ It aims to identify, recognize and promote the adoption of innovative and impactful digital technologies developed by the start-ups from the G20 countries and the non-member states.
- ❖ These technologies must be capable of addressing the needs of humanity in 6 broad themes – agriculture, health, education, finance, secured digital infrastructure and circular economy.
- ❖ The technologies developed based on these themes will be enabled via the Digital Public Goods Infrastructure.

- ❖ At the side-lines of the Digital Economy Working Group (DEWG) meeting in Bengaluru, the G20 Digital Innovation Alliance (G20-DIA) summit will be organized.



Mangdechhu Hydroelectric Power Project



- ❖ It was recently handed over to the Druk Green Power Corporation (DGPC) in Bhutan.
- ❖ It was implemented with the assistance from India.
- ❖ With this, the two countries have successfully completed four mega hydroelectric power projects.

- ❖ The hydropower sector is expected to contribute to Bhutan's economic growth and development based on the philosophy of Gross National Happiness.

SCIENCE AND TECHNOLOGY

Confuciusornis shifan



- ❖ The fossil remains of a 119-million-year-old beaked bird was recently discovered in China.
- ❖ It lived during the Early Cretaceous Period, around 119 million years ago in present-day China.
- ❖ It belonged to the Confuciusornithidae family of the genus Confuciusornis, a group of crow-sized beaked birds.
- ❖ It is a group of Early Cretaceous pygostylian birds that were found in the Jehol Biota of East Asia.
- ❖ This group represents the earliest known toothless, beaked birds.

Garrarnawun Bush Tomato

- ❖ A new species of bush tomato was discovered in Australia recently.
- ❖ It is currently found only in one site in world.
- ❖ Genus Solanum has around 1,400 accepted species that are distributed across the world.
- ❖ The species belonging to this genus are found in all continents except Antarctica.
- ❖ It is the most species-rich genus in the Solanaceae family.

- ❖ It is among the largest in the angiosperms (flowering plants).
- ❖ The genus includes 3 food crops having high economic value.
- ❖ These are the potato, tomato and eggplant (brinjal).
- ❖ Much of the species belonging to the Solanum are concentrated in circum-Amazonian tropical South America.
- ❖ However, its hotspots are also found in Africa and Australia.



IMPORTANT DAYS

Global Family Day – January 01





- ❖ It is celebrated to discourage unwarranted negative attitudes towards other cultures, nations.
- ❖ It was growing out of the United Nations Millennium celebration, "One Day in Peace".

