

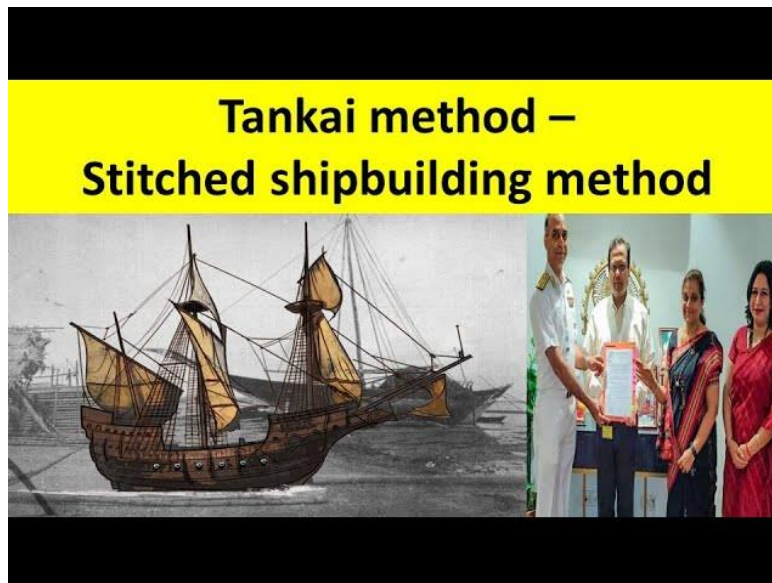
July - 22

TNPSC BITS

- ❖ India hosted the 2-day Global Food Regulators Summit in New Delhi.
- ❖ The Satluj Jal Vidyut Nigam (SJVN) has been conferred with the first prize at the prestigious Swachhta Pakhwada Award - 2023 by the Union Ministry of Power.
- ❖ Salman Rushdie has been awarded the prestigious Peace Prize of the German Book Trade for his literary work.

NATIONAL

Tankai method

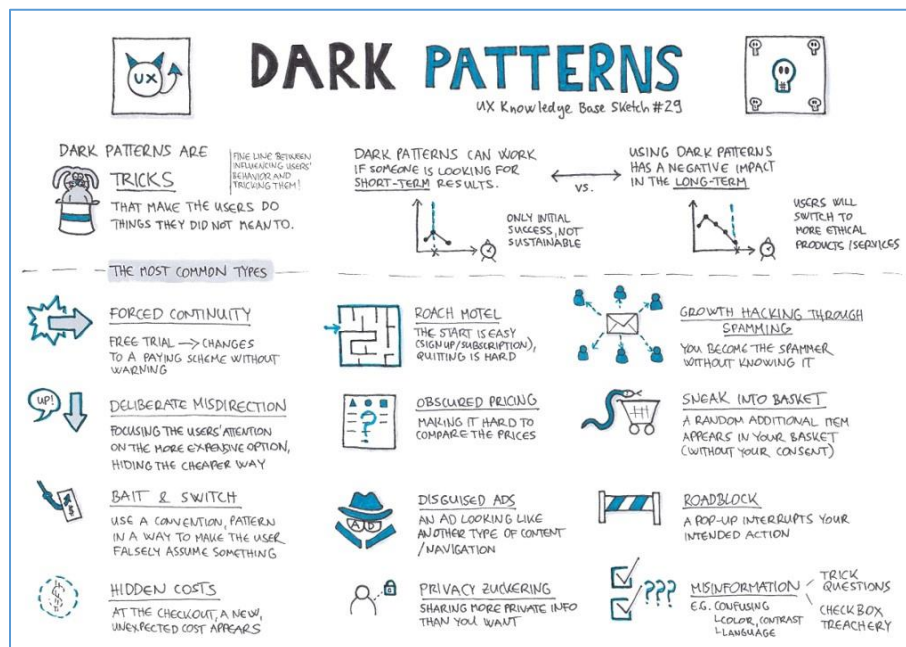


- ❖ The Ministry of Culture and the Indian Navy collaborated to revive and preserve a shipbuilding technique that dates back 2,000 years.
- ❖ This ancient technique, is known as the 'Tankai' method or the "stitched shipbuilding method".
- ❖ It is being revived with the aim of preserving cultural heritage for future generations.

Committee on Dark patterns

- ❖ The Ministry of Consumer Affairs, Food and Public Distribution has asked e-commerce companies to not use dark patterns on their platforms.

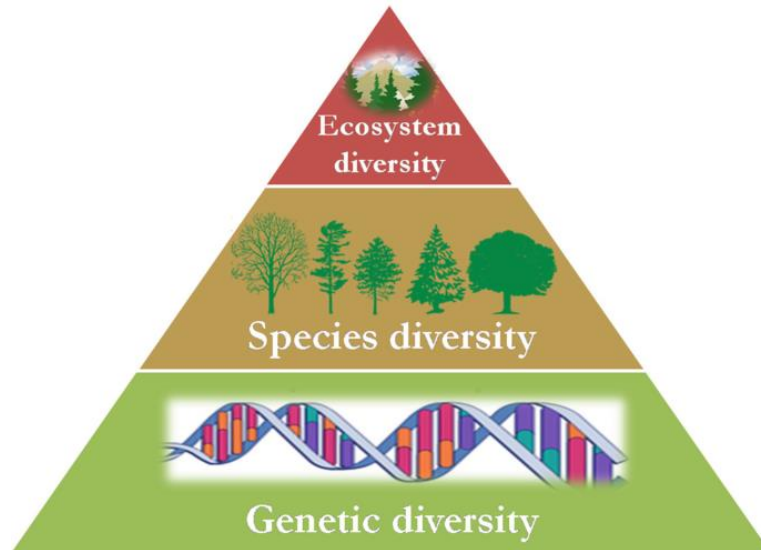
- ❖ These unethical strategies are designed to exploit certain cognitive and behavioural biases to persuade users into purchasing goods and services they would typically not pay for.
- ❖ Tech firms often use deceptive tactics to make users accept, for example, certain terms and conditions or products and services.
- ❖ Social media companies and tech giants like Facebook, Apple, Amazon, Skype, LinkedIn, Microsoft and Google have used dark patterns.
- ❖ Another example of dark patterns is the unsolicited, sponsored messages one gets from influencers.
- ❖ Dark patterns affect the user experience and even make them vulnerable to financial and data exploitation.
- ❖ Right now, dark patterns have been noticed as part of misleading advertisements.



Genetic Diversity and Species Traits

- ❖ The CSIR-Centre for Cellular & Molecular Biology (CCMB) has found the relationship between genetic diversity and species traits.
- ❖ The study focused on centipedes and found that they have higher genetic diversity compared to other arthropods like spiders and insects.
- ❖ Genetic diversity was found to be higher in the southern hemisphere.
- ❖ The historic climatic stability and low seasonality in southern latitudes may contribute to higher genetic diversity.

- ❖ Genetic diversity increased with the geographical distance between individuals, indicating limited gene flow between distant sites.



INTERNATIONAL

Local Currency Settlement System

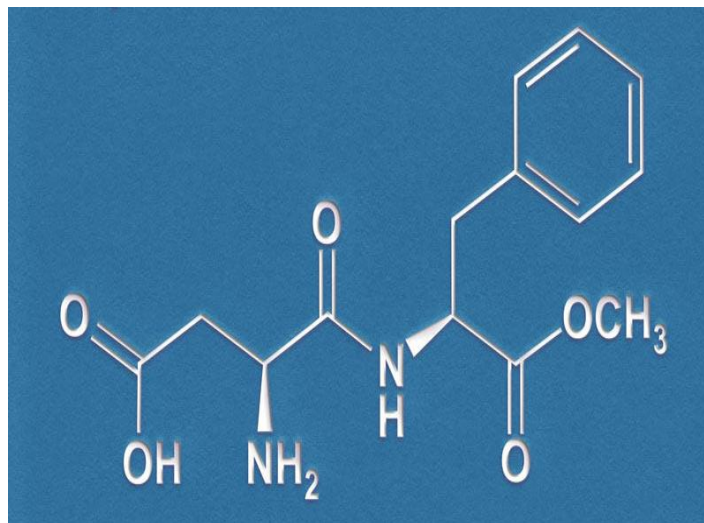


- ❖ The Reserve Bank of India and the Central Bank of UAE (CBUAE) signed a Memorandums of Understanding (MoU) to strengthen the use of local currencies for cross-border transactions.
- ❖ It aims to put in place a Local Currency Settlement System (LCSS).

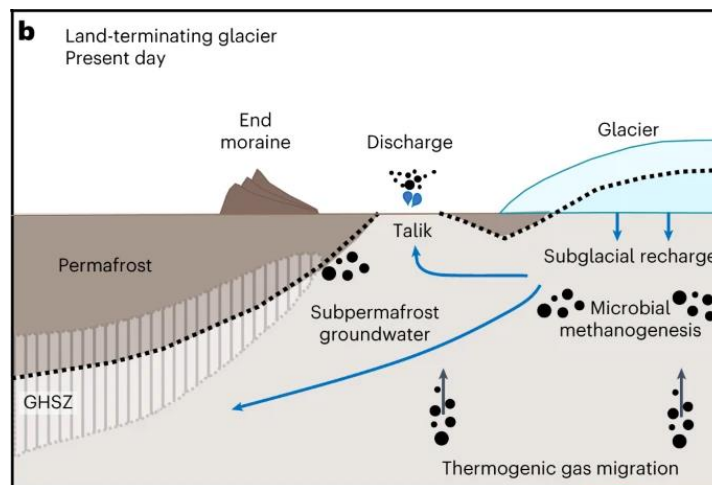
- ❖ The MoU covers all current account transactions and permitted capital account transactions.

Aspartame

- ❖ The WHO, FAO and International Agency for Research on Cancer declare artificial sweetener aspartame as possibly carcinogenic.
- ❖ Aspartame is an artificial sweetener used as a sugar substitute in a wide range of food and beverage products.
- ❖ It is a low-calorie sweetener, approximately 200 times sweeter than sucrose (table sugar).



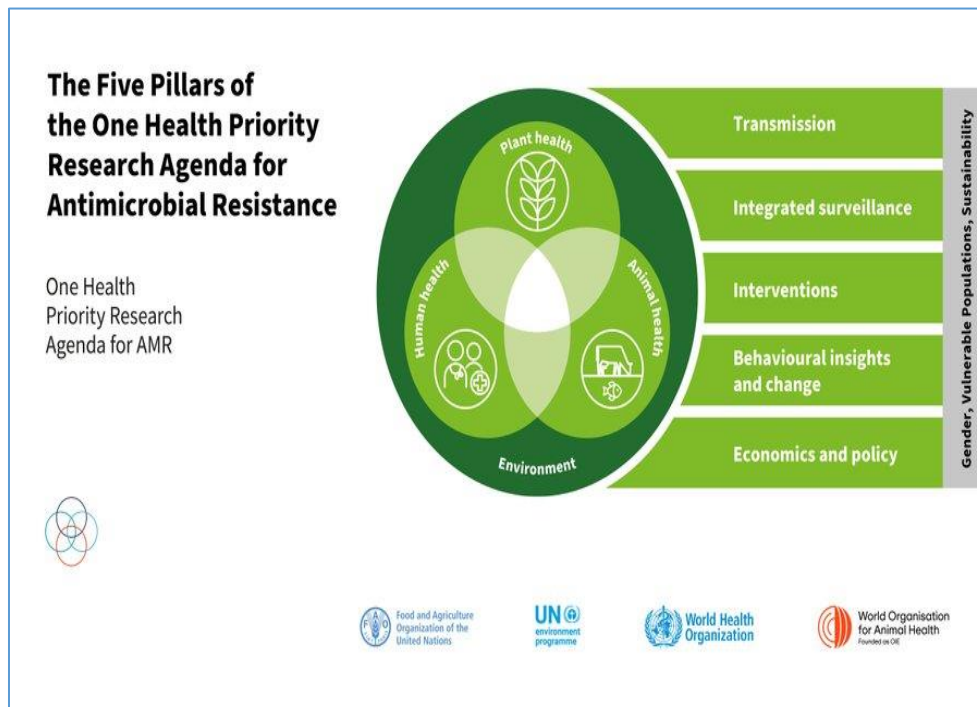
New methane source



- ❖ Climate change is causing groundwater springs to release methane in the Arctic.

- ❖ The retreating glaciers expose these methane-rich springs.
- ❖ The groundwater springs found in Svalbard, an archipelago in the Arctic, could be emitting over 2,000 tonnes of methane.
- ❖ This figure equals 10 per cent of the methane emissions from Norway's annual oil and gas energy industry.
- ❖ Methane, a greenhouse gas, is 84 times more potent than carbon dioxide on a 20-year timescale.

One Health Priority Research Agenda

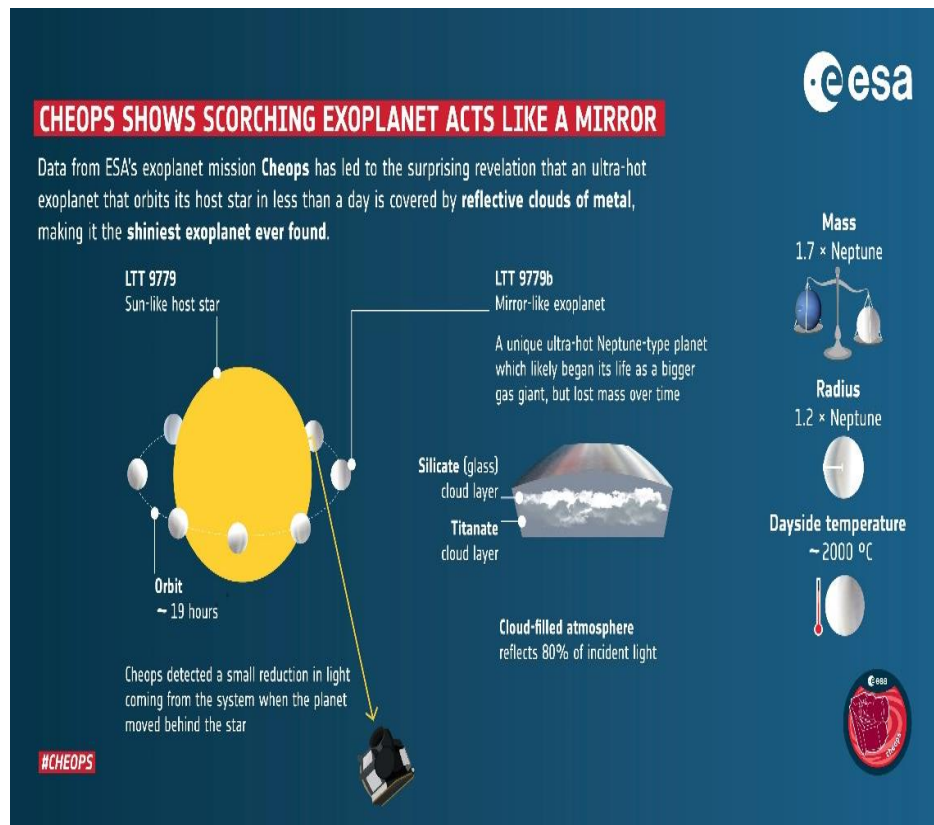


- ❖ The Quadripartite – comprising the FAO, UNEP, WHO and the World Organisation for Animal Health (WOAH) – released the One Health Priority Research Agenda on Antimicrobial Resistance.
- ❖ The concept acknowledges the health of humans, domestic and wild animals, plants, and the larger environment, including ecosystems, are inextricably linked and interdependent.
- ❖ At this One Health interface, addressing global health issues necessitates a multisectoral, multidisciplinary response to AMR.
- ❖ The five key pillars are Transmission, Integrated surveillance, Interventions, Behavioural insights and change, Economics and policy.
- ❖ It will serve as a guide for countries, research institutes and funding bodies to support One Health AMR research.

- ❖ It will also allow policymakers, researchers, and the multidisciplinary scientific community to collaborate across sectors.

SCIENCE AND TECHNOLOGY

Planet LTT9779 b



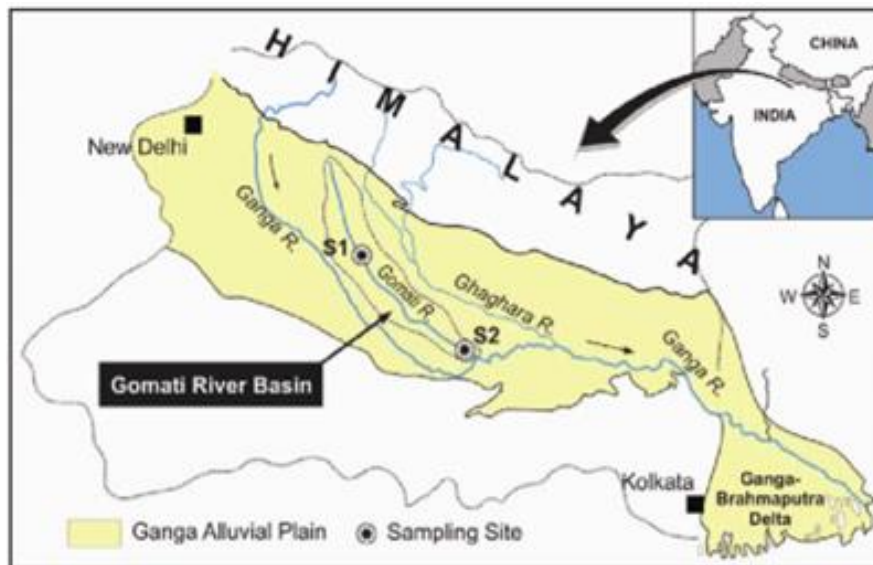
- ❖ Astronomers have found the most reflective planet ever discovered using data from the European Space Agency's (ESA) Cheops satellite.
- ❖ The planet has a thick layer of reflective metal clouds, essentially turning it into a gigantic mirror when viewed by observatories.
- ❖ The newly-discovered LTT9779 b, planet reflects a massive 80 per cent of the light it receives from its host star.
- ❖ Venus has a thick cloud layer that reflects about 75 per cent of the Sun's light.
- ❖ The Earth only reflects around 30 per cent of the incoming sunlight.
- ❖ This exoplanet is about the size of Neptune.
- ❖ The metallic clouds are mostly made of silicate.
- ❖ There are also other metals like titanium mixed into the clouds.

- ❖ The blazing-hot exoplanet is so close to its host star that it completes an orbit in less than a day.
- ❖ LTT9779 b can form metallic clouds despite being so hot because the atmosphere is oversaturated with silicate and metal vapours.

ENVIRONMENT

Gomti River “non perennial river”

- ❖ Uttar Pradesh government declaring the Gomti as a “non-perennial river” in 2020.
- ❖ Gomti is a tributary of Ganga River and an alluvial river of the Ganga Plain.
- ❖ It originates near Mainkot, from Gomat Taala lake also known as Fulhar Jheel in Madhotanda.
- ❖ The declaration of the river as a seasonal one takes away from its importance.

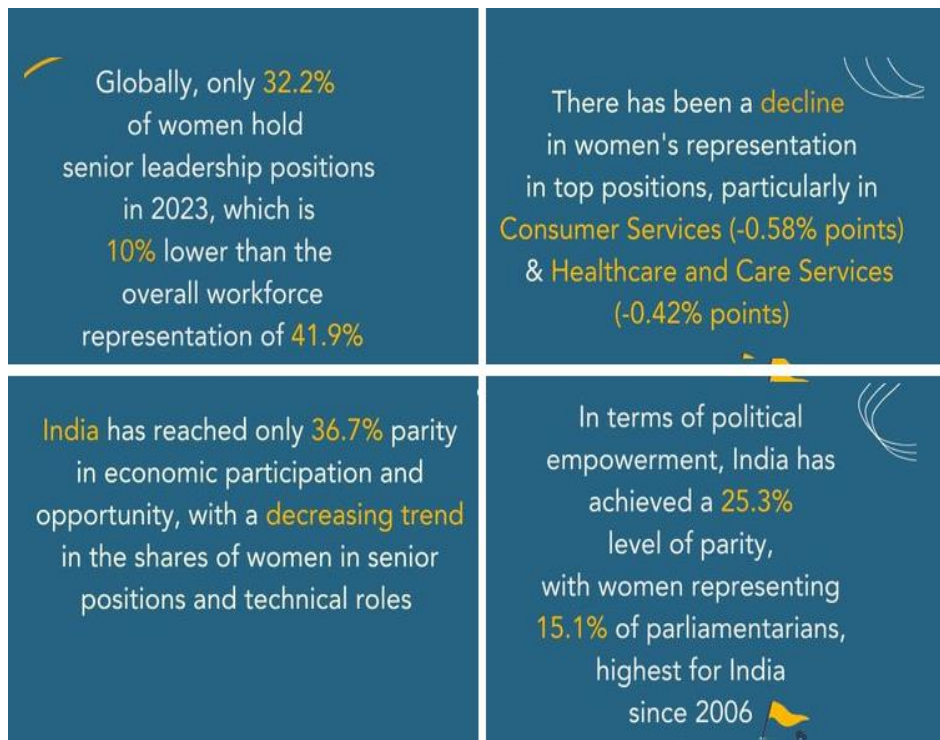


REPORTS AND INDICES

UN report on Gender parity

- ❖ This is released by two UN agencies – UN Women and UN Development Programme.
- ❖ The bodies collated data from 114 countries and analysed them based on the twin indices of Women’s Empowerment Index (WEI) and the Global Gender Parity Index (GGPI).

- ❖ On an average, women are empowered to achieve only 60 per cent of their full potential.
- ❖ They also were found to achieve 28 per cent less than men across key human development dimensions, as measured by the GGPI.
- ❖ None of the 114 countries analysed achieved full women's empowerment or complete gender parity.
- ❖ The report provides for the first time—a more comprehensive picture of progress in women and girl's human development.
- ❖ Of the 114 countries analysed, 85 have low or middle women's empowerment and low or middle performance in achieving gender parity.
- ❖ More than half the countries in this group are in the high (21 countries) or very high human development group (26 countries).



QS World's Best Cities for Students 2024

- ❖ London retains its top spot as the world's best student city for the fifth consecutive time.
- ❖ Tokyo gains grabbing the second place, followed by Seoul in third. Melbourne ascends to fourth, while Munich slips to fifth.
- ❖ Mumbai has ranked 118, the highest among Indian cities in the latest Quacquarelli Symonds (QS) Rankings for Best Student Cities 2024.

- ❖ At 132nd position, Delhi has come as the second most affordable student-friendly city followed by Bengaluru at 147, and Chennai at 154.

QS World's Best Cities for Students		
2024	2023	City
1	1	London
2	7	Tokyo
3	2	Seoul
4	5	Melbourne
5	2	Munich
6	8	Paris
7	9	Sydney
=8	6	Berlin
=8	4	Zurich
10	11	Boston

STATES

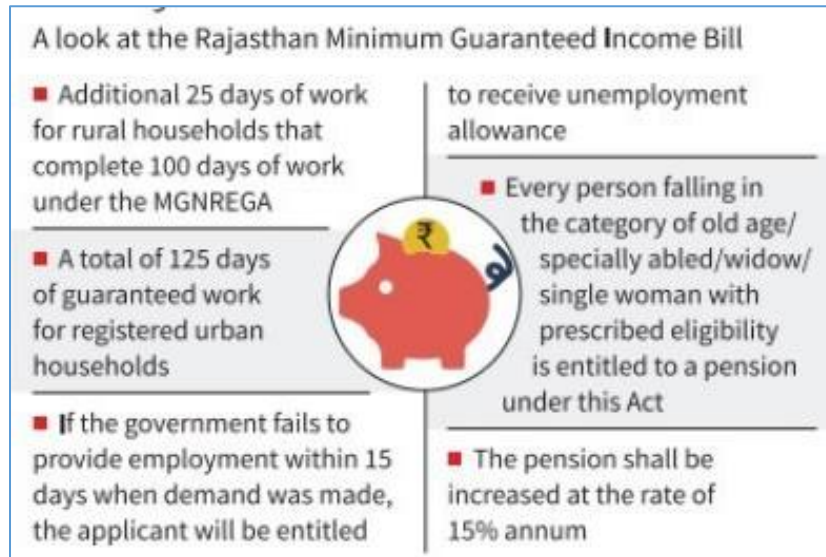
Gruha Lakshmi scheme



- ❖ The Karnataka Chief minister has launched the registration for the Congress government's 'Gruha Lakshmi' scheme.

- ❖ It provides ₹2,000 monthly assistance to the woman head of every family in the state.
- ❖ A Women from both Below Poverty Line (BPL) and Above Poverty Line (APL) households are eligible for the scheme as long as they - or the husbands - do not fall under the tax-paying bracket.

Minimum Guaranteed Income Bill – Rajasthan



- ❖ Rajasthan has tabled the Minimum Guaranteed Income Bill, 2023.
- ❖ Rajasthan will be the first state to have such a law.
- ❖ It seeks to cover the entire adult population of the state with guaranteed wages or pension.
- ❖ Under the Bill, all families of the state get guaranteed employment of 125 days every year.
- ❖ The aged, disabled, widows, and single women get a minimum pension of Rs 1,000 per month.
- ❖ Importantly, the pension will be increased at the rate of 15 per cent each year.
- ❖ The Bill has three broad categories:
 - Right to minimum guaranteed income,
 - Right to guaranteed employment, and
 - Right to guaranteed social security pension.
- ❖ Several other States too have in recent years introduced employment guarantee schemes for the urban areas but only via executive order.

- ❖ This is the first time in a state, the Urban Employment Guarantee Scheme will get legislative backing.
- ❖ This legislation has a universal application unlike the centrally sponsored pension scheme which is extended only for Below Poverty Line families.
- ❖ The pension offered by the Centre is also stuck at ₹200 per month and has been stagnant since 2007.

IMPORTANT DAYS

World Chess Day 2023 - July 20

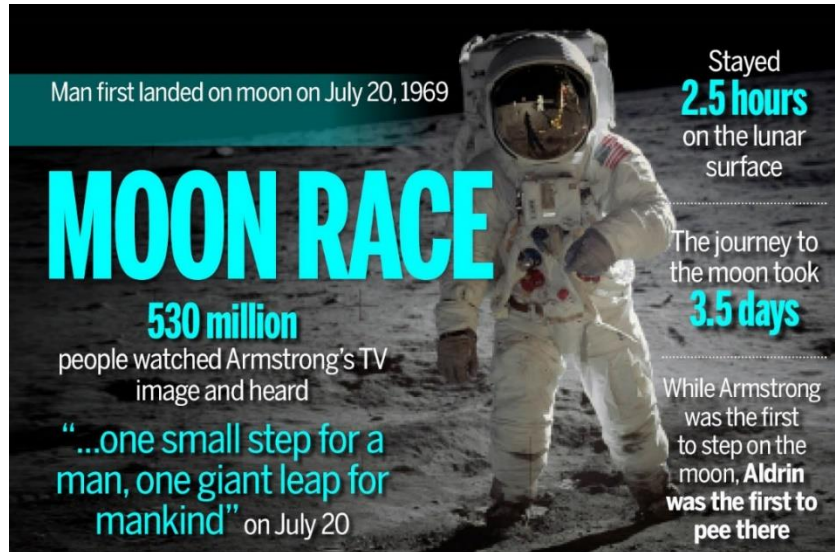


- ❖ It aims to raise awareness about the game of chess and appreciate chess players across the world.
- ❖ This day honours the founding of the International Chess Federation, FIDE by its French abbreviation in the year 1996.
- ❖ The International Olympic Committee acknowledged FIDE in 1999.
- ❖ About 70% of the adult population (US, UK, Germany, Russia, India) has played chess at some point in their lives.
- ❖ 605 million adults play chess regularly.
- ❖ The oldest living Grandmaster is Yuri Averbakh, who celebrated his 100th birthday in May 2022.

International Moon Day 2023 - July 20

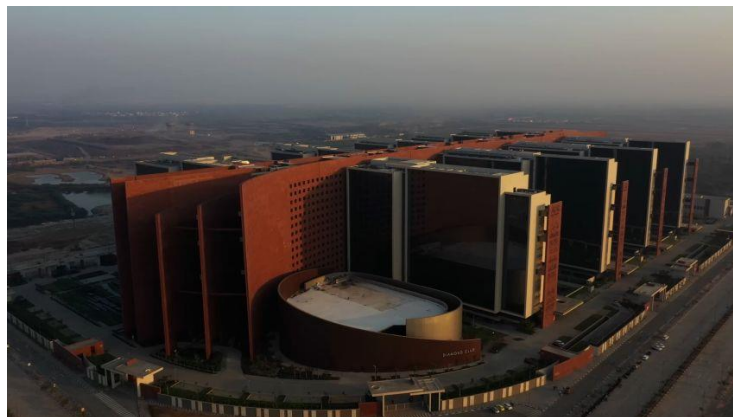
- ❖ This day marks the anniversary of the day when humans first landed on the Moon as part of Apollo 11 mission.

- ❖ Astronauts Neil Armstrong and Buzz Aldrin landed on the Moon in a location that they then named Tranquillity Base, on July 20, 1969.
- ❖ The Apollo 11 mission was the historic NASA spaceflight that achieved the first manned moon landing.
- ❖ Launched on July 16, 1969, it carried astronauts Neil Armstrong, Edwin "Buzz" Aldrin, and Michael Collins.
- ❖ After the US, Russia, and China, India will become the fourth country to successfully land on the Moon if Chandrayaan 3 mission is a success.



MISCELLANEOUS

World's Largest Office



- ❖ For 80 years, Pentagon of USA was the world's largest office building.
- ❖ Now the title taken by a Gujarat's Surat diamond trading centre building.



- ❖ Surat is known as the gem capital of the world where 90 per cent of the world's diamonds are cut.
- ❖ The 15-storey building is spread across 35 acres of land and has nine rectangular structures.

