



June - 01

## TNPSC BITS

- ❖ Praveen Kumar Srivastava has been appointed as the Central Vigilance Commissioner.
- ❖ Indian shuttler HS Prannoy defeated Chinese Weng Hong Yang in the Malaysia Masters 2023 final to clinch his first BWF World Tour title.

## NATIONAL

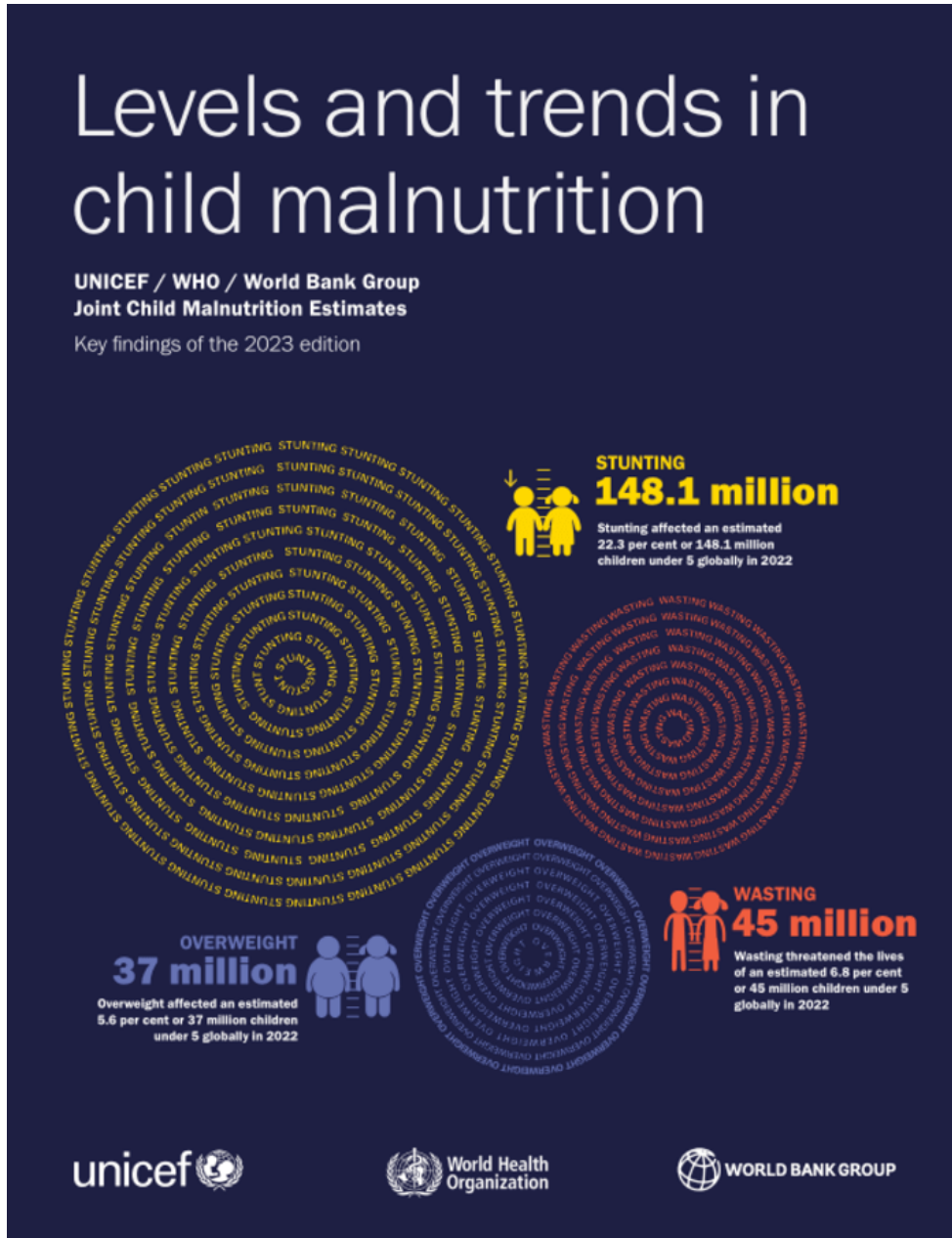
### New Rules for Special Protection Group



- ❖ The Ministry of Home Affairs (MHA) notified fresh rules for the elite Special Protection Group (SPG).
- ❖ It will now be handled by an officer not less than the rank of an Additional Director-General belonging to the Indian Police Service.
- ❖ Earlier, the SPG has been headed by an Inspector General of Police (IGP) rank officer.
- ❖ Junior officers will be appointed on deputation for an initial period of six years.

- ❖ According to a 2019 amendment to the SPG Act, 1988, the force now protects only Prime Minister and members of his immediate family.
- ❖ The force would also provide security to former Prime Ministers and their immediate family members staying with them at the residence allotted for a period of five years after his office.

## Joint Malnutrition Estimates Report




- ❖ The 2023 edition of the 'Joint Malnutrition Estimates' (JME) has released by UNICEF, WHO and the World Bank.

- ❖ There were 16 million fewer stunted children in India in 2022 as compared to 2012.
- ❖ Stunting among children under five years in India dropped from a prevalence rate of 41.6% in 2012 to 31.7% in 2022
- ❖ The numbers are dropping from 52 lakh to 36 lakh.
- ❖ The overall prevalence of wasting in 2022 was 18.7% in India, with a share of 49% in the global burden of this malnutrition indicator.
- ❖ The prevalence of obesity marginally increased in a decade from 2.2% in 2012 to 2.8% in 2022.
- ❖ India is contributing to 8.8% of the global share.
- ❖ But the overall classification for obesity is low and much lower than the global prevalence of 5.6%.
- ❖ Globally, stunting declined from a prevalence rate of 26.3% in 2012 to 22.3% in 2022.
- ❖ In South Asia, the decline was much sharper as it dropped from 40.3% to 30.5%.
- ❖ There was no improvement in the weight issue worldwide, as its prevalence rate grew from 5.5% to 5.6%.

## Persisting challenges

The Joint Malnutrition Estimates underscore India's mixed progress in battling malnutrition



- India saw 1.6 crore fewer stunted children under five years in 2022 compared with 2012
- Despite reduced stunting, wasting remains an issue with a prevalence rate of 18.7% in 2022 in India
- Prevalence of overweight children increased from 2.2% in 2012 to 2.8% in 2022 in India
- Global stunting declined from 26.3% in 2012 to 22.3% in 2022, but obesity prevalence increased from 5.5% to 5.6%

## INTERNATIONAL

### Global Wealth Conference

- ❖ The Sovereign Wealth Fund Institute (SWFI), a source on institutional investors and global capital's Global Wealth Conference (GWC) will be held London.

- ❖ The GWC platform has attracted some of the world's largest pools of capital, some of which are coming from India.
- ❖ Sovereign wealth funds globally see India as a destination for direct investments.
- ❖ Sovereign wealth funds have directly invested \$6.714 billion into India in 2022, compared to just \$4.3 billion in 2021.



## Replenishment mechanism



- ❖ The purpose of the replenishment mechanism is to provide the organization with more flexible funding options.
- ❖ The replenishment mechanism aims to address this challenge and ensure greater financial flexibility for WHO.
- ❖ This will cover a four-year period from 2025 to 2028.
- ❖ Currently, 84% of WHO's funds are sourced from generous donors.

- ❖ Of these funds, specific voluntary contributions comprise 88 per cent of all donations.
- ❖ This leaves no room for WHO to be flexible and shift funds as per its requirements.

## SCIENCE AND TECHNOLOGY

### Navigational satellite – NVS 1

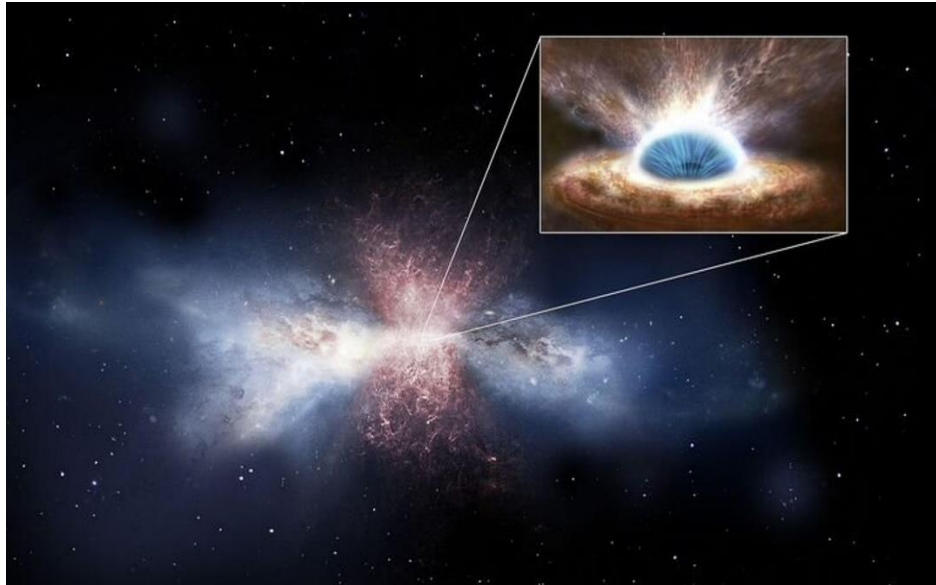


- ❖ ISRO launched India's Next-Gen Navigation Satellite NVS-01 successfully.
- ❖ NVS-01 is first of the India's second-generation NavIC satellites.
- ❖ It is aimed to augment the navigational capabilities of the country.
- ❖ The network covers an area including India and a region up to 1500 km beyond the Indian boundary.
- ❖ The signals are designed to provide user position accuracy better than 20 meters and timing accuracy better than 50 nanoseconds.

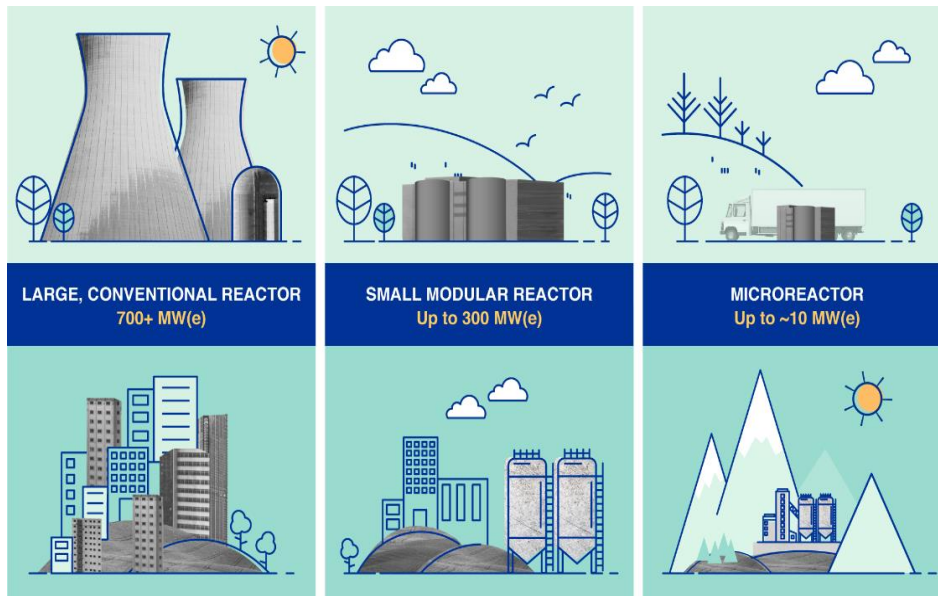
### Supermassive Black Hole in GS-9209

- ❖ The massive black hole was spotted by researchers in a galaxy called GS-9209.
- ❖ It lies 25 billion light-years away from Earth.
- ❖ It is one of the farthest to have been discovered and recorded.
- ❖ The GS-9209 galaxy was discovered in 2004.

- ❖ It was born about 600 to 800 million years after the Big Bang.



## Modular reactors



- ❖ India is taking steps for development of Small Modular Reactors (SMR), with up to 300 MW capacity to fulfill its commitment to Clean Energy transition.
- ❖ Being mobile and agile technology, the SMR can be factory-built unlike the conventional nuclear reactors that are built on-site.
- ❖ Thus, SMRs offers significant savings in cost and construction time.
- ❖ SMR is a promising technology in industrial de-carbonization especially where there is a requirement of reliable and continuous supply of power.

- ❖ It is said that SMR is simpler and safer as compared to large nuclear plants.

## Daam Malware



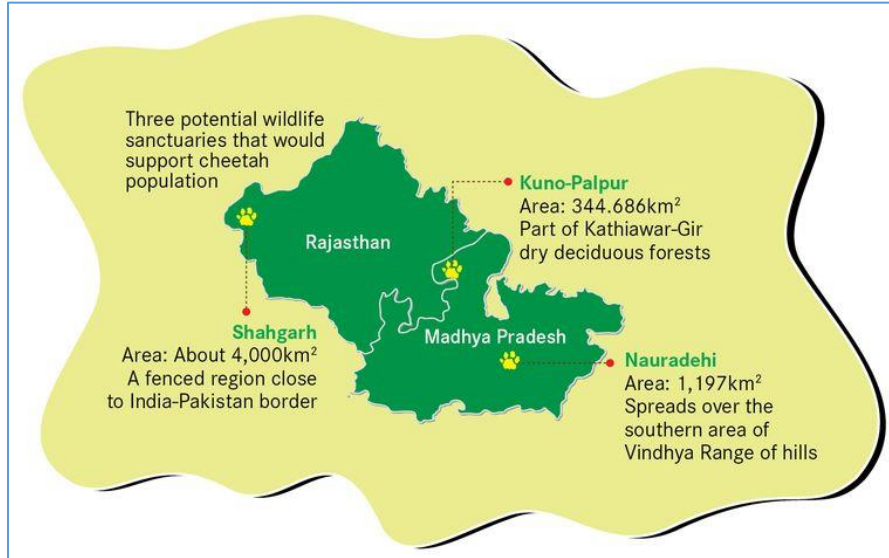
- ❖ The Indian Computer Emergency Response Team or CERT-IN has issued a warning against Android malware.
- ❖ 'Daam', the malware infects mobile phones and hacks into users' sensitive data like call records, contacts, history and camera has been found on Android devices.
- ❖ The malware is capable of "bypassing anti-virus programs and deploying ransomware on the targeted devices".
- ❖ This is distributed through third-party websites or apps that have been downloaded from untrusted/unknown sources.

## ENVIRONMENT

### Cheetah Project Steering Committee

- ❖ The Centre has set up yet high-level panel of national and international experts to oversee and monitor the ambitious Project Cheetah in India.
- ❖ This step has taken after the death of six cheetahs, including three newborn cubs, at the Kuno National Park (KNP) in Madhya Pradesh.
- ❖ The National Tiger Conservation Authority (NTCA) has constituted this Committee with 11 members.

- ❖ The Committee will be chaired by Rajesh Gopal (former member secretary of the NTCA and currently with the Global Tiger Forum).
- ❖ In October last year, the ministry had constituted a “Cheetah Task Force” to monitor India’s cheetah introduction programme.



## MISCELLANEOUS

### Gateway to the Underworld



- ❖ The ancient Olmec artifact known as the “Gateway to the Underworld” was successfully returned to Mexico.
- ❖ It was illegally taken in the late 1950s.
- ❖ The piece is officially known as Monument 9 of Chalcatzingo.





- ❖ It is considered Mexico's most sought-after piece from the ancient Olmec civilization.
- ❖ It belongs to the Mid-Pre-Classic period (800 – 400 BC).
- ❖ Olmecs are one of the oldest civilizations in Mesoamerica.
- ❖ According to estimates, they developed between 1200 and 400 BC.

★ ★ ★ ★ ★ ★ ★ ★ ★ ★