

June - 02

## TNPSC BITS


- ❖ The Commissionerate of Rehabilitation and Welfare of Non-Resident Tamils and the School Education Department jointly have launched 'Kalangarai' – a career guidance programme for Sri Lankan Tamil students.
- ❖ Dr. Emmanuelle Soubeyran assumed Director General of the World Organization for Animal Health (WOAH) for the 2024-2029 term.
- ❖ For the sixth consecutive year, London-based Indian origin artist Anish Kapoor has topped the Hurun India Art List of the most successful Indian artists alive.

## TAMIL NADU

### Internet connection for State-run schools

### INTERNET FOR ALL

*Priority to be given to schools situated in rural areas*



- From middle level onwards, schools will get internet facilities
- Optical fibre cables will be installed in all government higher secondary schools and a multinational company would be entrusted with the job
- Experts will monitor the schools to ensure uninterrupted internet connection
- Authorities will also ensure to replace old computers with new ones
- More than **40,000** teachers will be provided training to handle internet utilities

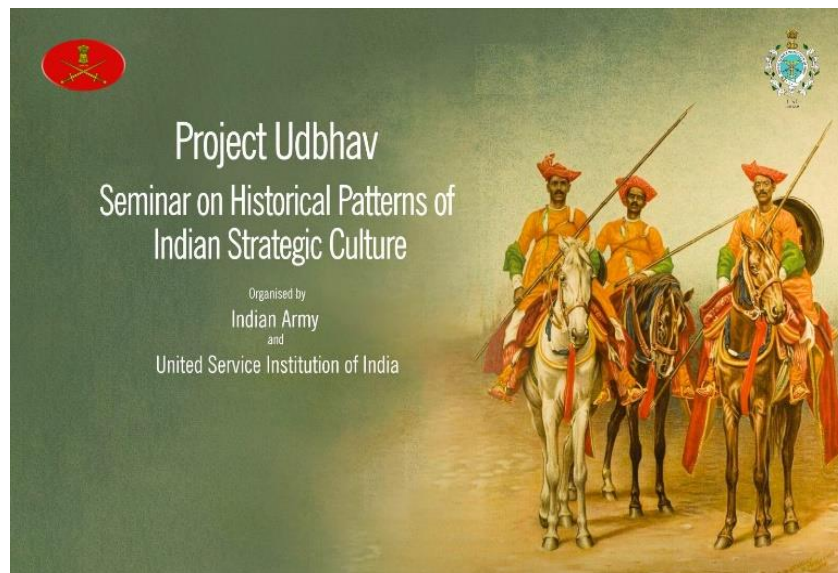
- ❖ Internet connections have been provided to 20,332 out of a total of 37,553 State-run schools, and the remaining 17,221 schools would be covered by the second week of June.
- ❖ Of the 6,223 government higher secondary and high schools across the State, 5,913 had got internet connections.

- ❖ Of the 6,992 middle schools, 3,799 had been provided the facility.
- ❖ As for the primary schools, 10,620 out of a total of 24,338 schools had been given internet connections.

## **NATIONAL**

### **Project Udbhav**

- ❖ Indian army is reconnecting with its rich heritage through Project Udbhav.
- ❖ It aims to enhance the country's defence outlook with ancient strategic insights.
- ❖ It was launched last year in collaboration with the United Service Institution of India.
- ❖ Project Udbhav integrates India's ancient strategic wisdom into modern military practices.



## **INTERNATIONAL**

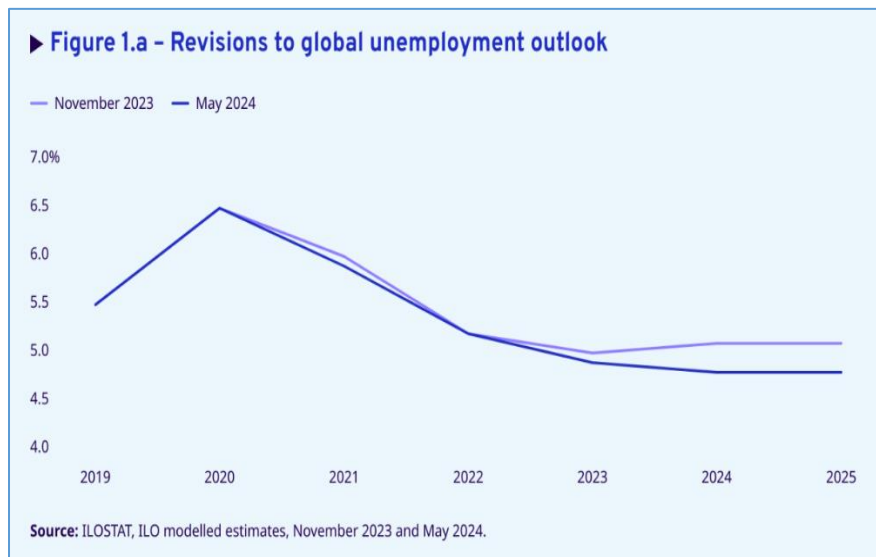
### **WIPO's new treaty**

- ❖ The World Intellectual Property Organisation (WIPO) has approved the Treaty on Intellectual Property, Genetic Resources and Associated Traditional Knowledge (Treaty).
- ❖ The Treaty is primarily concerned with the inclusion of genetic material in patent applications that derive from the traditional knowledge of Indigenous Peoples.

- ❖ The Treaty defines 'genetic material' as any material of plant, animal, microbial or other origin containing functional units of heredity.



## World Unemployment in 2024



- ❖ The International Labour Organization (ILO) expects a global unemployment rate of 4.9% in 2024.
- ❖ It is originally forecasting unemployment would rise to 5.2% this year from five percent in 2023.
- ❖ The Geneva-based UN agency forecasts that the rate will stay at 4.9% in 2025.
- ❖ 183 million people meet the definition of unemployed but the number of people without a job who wanted to work stood at 402 million.

- ❖ Women in low-income countries were especially hard-hit, with 22.8% who wanted a job not in work, compared with 15.3 percent for men.
- ❖ For high-income countries, the rate stood at 9.7% for women and 7.3% for men.
- ❖ 45.6% of women of working age were employed in 2024.
- ❖ For men, the figure was 69.2%.

### Chair of Colombo Process

- ❖ India has become chair of regional grouping Colombo Process for the first time since its inception in 2003.
- ❖ The Colombo Process is a regional consultative forum comprising 12 member states of Asia.
- ❖ Colombo Process is a Regional Consultative Process of migrant worker origin countries from South and SE Asia.
- ❖ It serves as a forum for exchange of best practices on overseas employment



## SCIENCE AND TECHNOLOGY

### Magellan Mission – NASA

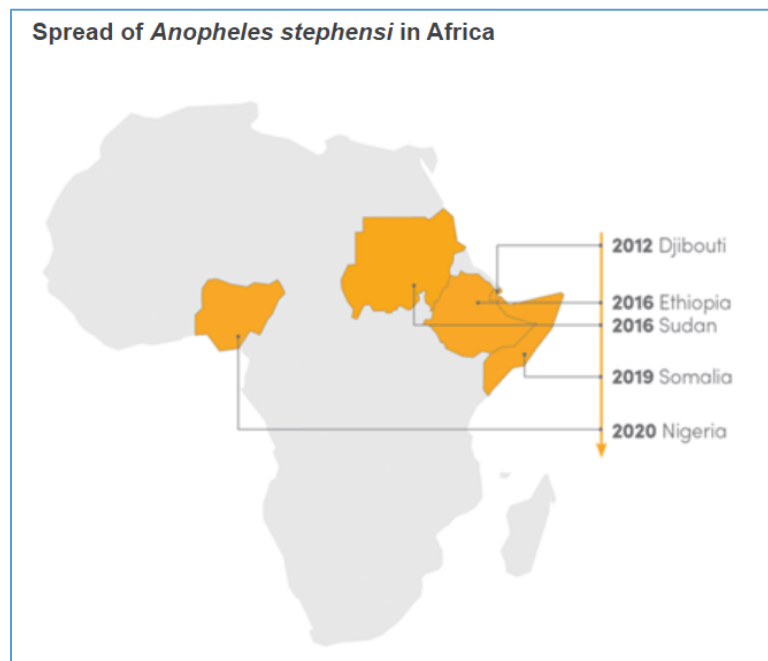
- ❖ NASA's Magellan mission reached Venus in 1990 and was the first spacecraft that mapped the entire surface of the planet.
- ❖ It was vanished into Venus' atmosphere on October 12, 1994.
- ❖ Since then, no other spacecraft has been sent to explore Venus.
- ❖ As per the study of its data, Venus, the closest Earth-like planet in our solar system with thousands of volcanoes may still be active.



- ❖ The planet was volcanically active between 1990 and 1992.
- ❖ In March last year, scientists observed that a volcanic vent on the planet had changed its shape and significantly increased in size in just one year.
- ❖ In 2031, NASA is planning to send a new mission to Venus Named VERITAS.



### GM Mosquitoes – Djibouti



- ❖ Genetically modified (GMO) mosquitoes were released in Djibouti, East Africa to fight malaria.
- ❖ They have released genetically altered male mosquitoes carrying a special gene that prevents their female offspring from reaching adulthood.

- ❖ The method targets female mosquitoes, which are predominantly responsible for malaria transmission.
- ❖ By reducing the female mosquito population, the scientists hope to significantly decrease the spread of the disease.
- ❖ Male mosquitoes do not bite and therefore cannot transmit malaria.
- ❖ The 'Djibouti Friendly Mosquito Programme' started two years ago to stop the spread of *Anopheles stephensi*, an invasive species of mosquito.
- ❖ In 2012, when *Anopheles stephensi* was first detected in Africa, Djibouti reported 27 cases of malaria.
- ❖ By 2020, the country's malaria caseload had crossed 73,000.
- ❖ This is the first time a genetically engineered mosquito has been released in East Africa and the second time on the African continent after Burkina Faso.

## ENVIRONMENT

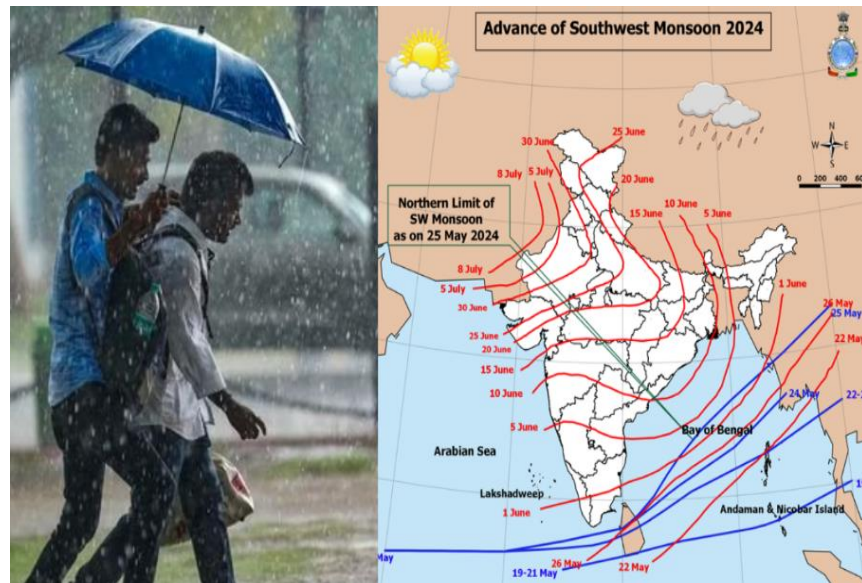
### Urbanization and Night Time Warming

What can be done	THE FINDINGS	
<ul style="list-style-type: none"><li>● Urban planning strategies should include energy-efficient structures, promotion of green spaces and use of reflective surfaces</li><li>● Build climate resilience into the future development plans of cities</li><li>● Established cities with limited room for infrastructure changes will need innovative solutions and adaptation strategies</li></ul>	<p><b>OVERALL WARMING:</b> On average, cities experienced a temperature increase of 0.53 degrees per decade compared to 0.26 degrees in rural areas</p> <p><b>URBAN HEAT TRAP:</b> Faster warming is linked to the "urban heat island effect." With their abundance of concrete and asphalt, cities absorb and retain heat more efficiently than natural landscapes</p>	<p><b>URBANIZATION'S IMPACT:</b> The study reveals that on average, 37.73% of extra warming in cities is due to urbanization. This translates to cities being roughly 60% warmer than surrounding rural areas</p>

- ❖ Urbanization has led to nearly 60 per cent more night-time warming in over 140 prominent Indian cities compared to non-urban areas surrounding them.
- ❖ Urbanisation is known to be responsible for the urban heat island (UHI) effect.
- ❖ The concrete and asphalt (used in constructing roads and pavements) surfaces store heat during the day and release it in the evening, thereby raising night-time temperatures.
- ❖ The mean urban effect for all these cities across India was found to be 0.2 degrees Celsius per decade.

- ❖ This leads to an estimate of 37.73 per cent of the total urban warming being linked to urbanisation.
- ❖ Currently, 36 per cent of India's population, or about 40 crores, is urban and will double to 80 crores by 2050.

### Onset of South west monsoon 2024

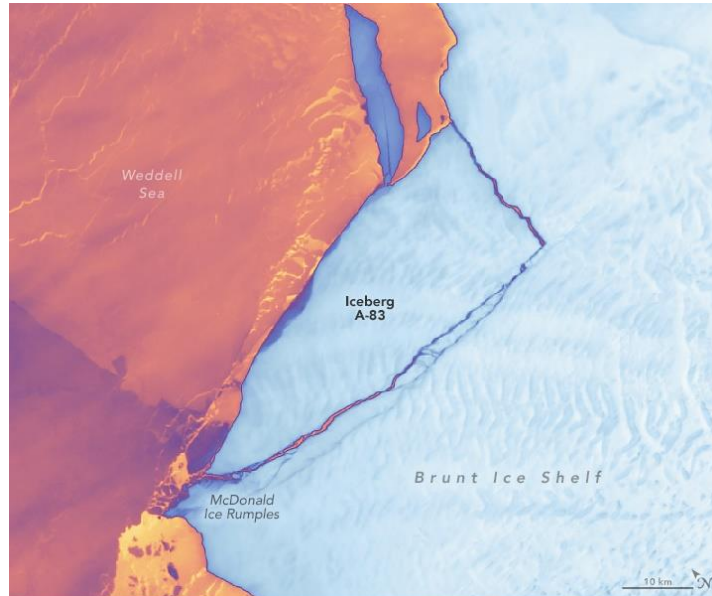


- ❖ The India Meteorological Department has announced the onset of Southwest monsoon over Kerala and northeast India.
- ❖ The monsoon hit the country's mainland two days in advance against its normal date of onset on June 1.
- ❖ Southwest monsoon has set in over Kerala and advanced into most parts of Northeast India on May 30, 2024.
- ❖ In 2023, the southwest monsoon had set in on June 8.
- ❖ But it arrived in the Bay of Bengal on May 19<sup>th</sup> 2024 at Andaman Islands.

### Halloween Crack

- ❖ A large iceberg, measuring 375 square kilometres, broke off from Antarctica's Brunt Ice Shelf recently.
- ❖ The iceberg that broke off was named A-83.
- ❖ Iceberg A-83 was first spotted off the Brunt Ice Shelf in the eastern Weddell Sea.
- ❖ It broke from a rift known as the "Halloween Crack".

- ❖ Although iceberg calving is normal, the Brunt Ice Shelf is feeling the same pressures as elsewhere around Antarctica, including low sea ice conditions.
- ❖ First spotted on 31 October 2016, the Halloween Crack runs from an area known as McDonald Ice Rumples.



## PERSONALITIES, AWARDS, AND EVENTS

### Dag Hammarskjöld Medal



- ❖ Indian peace keeper Naik Dhananjay Kumar Singh honoured posthumously with the Dag Hammarskjöld medal.
- ❖ He served with the UN Stabilisation Mission in the Democratic Republic of Congo (MONUSCO).





- ❖ Naik Singh was part of the Army Medical Corps, which deals with providing medical services to military personnel.
- ❖ India is the second largest contributor of uniformed personnel to UN Peacekeeping.
- ❖ It currently deploys more than 6,000 military and police personnel to the UN operations.

