

June - 30

TNPSC BITS

- ❖ India and Egypt signed an agreement to elevate the bilateral relationship to a "Strategic Partnership".
- ❖ The prestigious Intersolar Europe 2023 exhibition held in Munich, Germany.
- ❖ The International Pineapple Day is celebrated on June 27th each year to honor and appreciate the tropical fruit known as the pineapple.

INTERNATIONAL

The Hiroshima AI process



- ❖ The annual Group of Seven (G7) Summit, hosted by Japan, took place in Hiroshima.
- ❖ The G7 Hiroshima Leaders' Communiqué initiated the Hiroshima AI Process (HAP).
- ❖ It is an effort by this bloc to determine a way forward to regulate artificial intelligence (AI).

- ❖ It aims to advance international discussions on inclusive AI governance and interoperability to achieve our common vision and goal of trustworthy AI.

'In-country' Renewable H-1B Visas

- ❖ The US is set to introduce in-country renewable H-1B visas as part of the people-to-people initiative.
- ❖ The move is set to smoothen the process of H-1B visa renewal for several Indians who are working in the US on a H-1B visa.
- ❖ H-1B visa is a non-immigrant visa that allows US companies to employ foreign workers in speciality occupations that require theoretical or technical expertise.
- ❖ The H-1B visas are issued for three years at a time.
- ❖ Until 2004, certain categories of non-immigrant visas, particularly the H-1B, could be renewed or stamped inside the US.
- ❖ After that, for the renewal of H-1B, the workers have to go to their own country to get the H-1B extension stamped on their passport.

| | |
|--------------------|---|
| 2.7 million | Indian-origin persons in the US as of 2021, according to Migration Policy Institute |
| 73% | Share of H-1B visas given to Indians in 2022 |
| 5 | Number of Indian-origin members in the US Congress |
| #6 | India's rank in foreign tourist arrivals to the US (2022) |
| 28.60% | Share of US in foreign tourist arrivals to India, the highest (2021) |

ENVIRONMENT

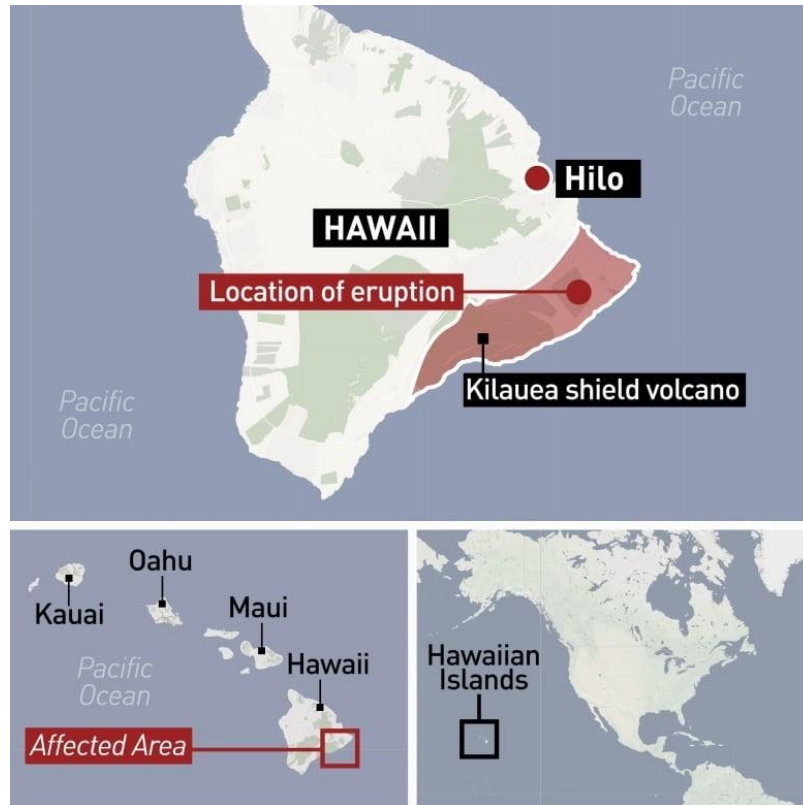
Burmese Peacock Softshell Turtles

- ❖ Burmese peacock softshell turtles have hatched from their eggs in Myanmar.
- ❖ They also known as Nilssonina Formosa are only found in Myanmar.
- ❖ They may have declined by at least 80 per cent over the past 90 years.

- ❖ They are listed as a critically endangered turtle species in IUCN list.



Kilauea volcano



- ❖ The Kilauea volcano in Hawaii, one of the most active volcanoes, began to erupt.
- ❖ The eruption has commenced within Halema'uma'u crater in Kilauea's summit caldera, within Hawaii Volcanoes National Park.
- ❖ The sulphur dioxide emission rate of around 65,000 tonnes per day.

- ❖ The volcano had stopped erupting in December for the first time since September 2021.

REPORTS AND INDICES

Food Outlook Report

| Table 1. World wheat market at a glance | | | | |
|--|----------------|-------------------|-------------------|--|
| | 2021/22 | 2022/23 estim. | 2023/24 f'cast | Change: 2023/24 over 2022/23 |
| | million tonnes | | | % |
| WORLD BALANCE | | | | |
| Production | 777.7 | 800.9 | 776.7 | -3.0 |
| Trade ^a | 195.9 | 199.6 | 193.7 | -3.0 |
| Total utilization | 774.6 | 779.7 | 780.3 | 0.1 |
| Food | 524.0 | 530.7 | 535.0 | 0.8 |
| Feed | 147.7 | 151.2 | 153.0 | 1.2 |
| Other uses | 89.9 | 92.7 | 91.7 | -1.1 |
| Ending stocks ^b | 295.1 | 310.7 | 308.5 | -0.7 |
| SUPPLY AND DEMAND INDICATORS | | | | |
| Per caput food consumption: | | | | |
| World (kg/yr) | 67.1 | 67.1 | 67.0 | -0.1 |
| LIFDC (kg/yr) | 39.2 | 38.8 | 38.7 | -0.3 |
| World stocks-to-use ratio (%) | 37.8 | 39.8 | 38.9 | |
| Major exporters stocks-to-disappearance ratio ^c (%) | 16.0 | 19.1 | 17.7 | |
| FAO WHEAT PRICE INDEX^d (2014-2016=100) | | | | |
| | 2021 | 2022 | 2023 Jan-May | Change: Jan-May 2023 over Jan-May 2022 % |
| | 132 | 165 | 138 | -32% |

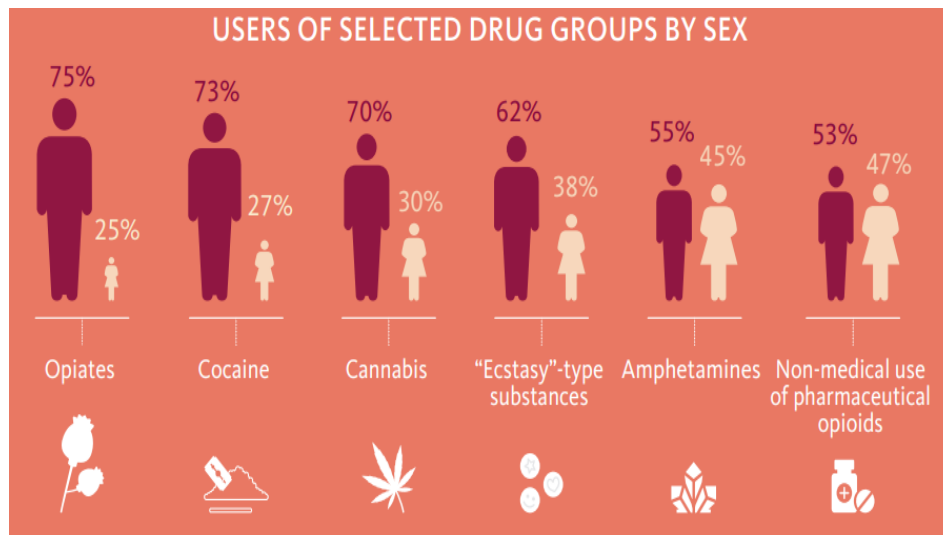
| Table 2. Wheat production: leading producers ^e | | | | |
|---|----------------|----------------|----------------|------------------------------|
| | 2021 | 2022 estim. | 2023 f'cast | Change: 2023 over 2022 |
| | million tonnes | | | % |
| China (Mainland) | 136.9 | 137.7 | 138.5 | 0.6 |
| European Union | 138.1 | 134.1 | 138.8 | 3.5 |
| India | 109.6 | 107.7 | 110.0 | 2.1 |
| Russian Federation | 76.1 | 102.7 | 82.8 | -19.3 |
| United States of America | 44.8 | 44.9 | 45.2 | 0.6 |
| Australia | 36.2 | 39.2 | 28.2 | -28.1 |
| Canada | 22.4 | 33.8 | 34.3 | 1.5 |
| Pakistan | 27.5 | 26.4 | 26.8 | 1.6 |
| Ukraine | 32.2 | 20.2 | 17.0 | -15.8 |
| Türkiye | 17.7 | 19.8 | 18.8 | -5.1 |
| United Kingdom of Great Britain and Northern Ireland | 14.0 | 15.5 | 14.4 | -7.6 |
| Kazakhstan | 11.8 | 16.4 | 14.1 | -14.0 |
| Iran (Islamic Rep Of) | 10.1 | 13.0 | 13.0 | 0.0 |
| Others | 100.4 | 89.4 | 94.9 | 6.1 |
| World | 777.7 | 800.9 | 776.7 | -3.0 |

- ❖ This report was released by the United Nations' Food and Agriculture Organization (FAO).
- ❖ The food import bill for the least developed countries was predicted to decline by 1.5 per cent this year.
- ❖ Net food-importing developing countries may see a 4.9 per cent decline.
- ❖ It estimated that the global food bill will rise to \$1.98 trillion in 2023, up by 1.5 per cent from 2022.
- ❖ World rice production is forecast to rise by 1.3 per cent in 2023-24 to 523.5 million tonnes.

- ❖ International trade is expected to drop by 4.3 per cent in volume terms to 53.6 million tonnes.
- ❖ Wheat production in 2023 is expected to decline by 3 per cent from its all-time high of 777 million tonnes in 2022.

World Drug Report 2023

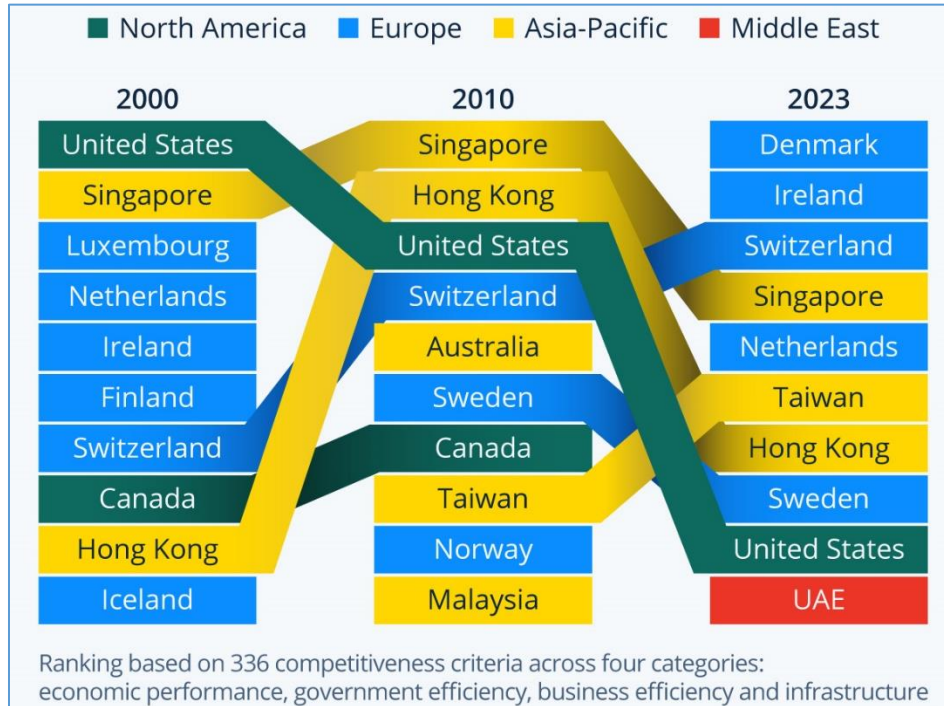
- ❖ The World Drug Report 2023 was launched by the UN Office on Drugs and Crime (UNODC).
- ❖ Global estimate of people who inject drugs in 2021 was at 13.2 million.
- ❖ It is 18 per cent higher than previously estimated.
- ❖ Globally, over 296 million people used drugs in 2021.
- ❖ This is an increase of 23 per cent over the previous decade.
- ❖ The number of people who suffer from drug use disorders, has skyrocketed to 39.5 million.
- ❖ This is a 45 per cent increase over 10 years.
- ❖ While almost 90 percent of methamphetamine seized worldwide was in two regions – East and Southeast Asia and North America.



IMD World Competitiveness Ranking

- ❖ The latest world competitiveness ranking was published by the International Institute for Management Development (IMD).
- ❖ Denmark, Ireland and Switzerland took the top three places.
- ❖ India fell 3 ranks from 37 to finish 40th place.

- ❖ It was placed 43rd three years in a row between 2019-2021.
- ❖ The IMD report highlighted that India witnessed improvements in government efficiency but slightly underperformed in business efficiency, infrastructure, and economic performance when compared to other countries.



PERSONALITIES, AWARDS, AND EVENTS

Expansion of Grammy Awards



- ❖ The Grammy Awards is known for honouring exceptional achievements in the music industry.
- ❖ It has added three new Categories: Best African Music Performance, Best Alternative Jazz Album and Best Pop Dance Recording.

- ❖ These new categories will be introduced at the 2024 GRAMMYs, officially known as the 66th GRAMMY Awards.
- ❖ Additionally, the existing Categories of Producer of the Year, Non-Classical and Songwriter of The Year, Non-Classical will be moved to the General Field.

SPORTS

Special Olympics World Games 2023



- ❖ For the first time, Germany had been chosen as the host country for the Special Olympics World Games.
- ❖ India ended their Special Olympics World Games campaign with a whopping 202 medals.
- ❖ India secured 76 gold, 75 silver and 51 bronze medals in the global multi-sport event.
- ❖ It is held every two years.
- ❖ 2025 and 2027 editions will be held in Italy and Australia respectively.

IMPORTANT DAYS

World Asteroid Day 2023 - June 30

- ❖ It aims to raise public awareness about the asteroid impact hazard and to inform the public about the crisis communication actions to be taken
- ❖ This day marks anniversary of the Tunguska impact over Siberia, Russian Federation, on 30 June 1908.
- ❖ On this day, a meteor burst on the surface of the Earth and leveled 2,150 square kilometers of forest land in Siberia, Russia.

- ❖ The current known asteroid count is 1,297,954, according to NASA.
- ❖ Theme of 2023 edition is “Asteroid discovery”.



International Parliamentary Day 2023 - June 30



- ❖ It commemorates the date on which the Inter-Parliamentary Union (IPU) was founded.
- ❖ The IPU, founded in Paris in 1889, is an international organisation of national parliaments.

- ❖ It aims to promote democratic governance, accountability, and cooperation among its members.
- ❖ The Icelandic Parliament (Althing) was founded in 930, is the oldest parliament in the world.
- ❖ The theme of 2023 is "Parliaments for the planet".

MISCELLANEOUS

Al-Hakim Mosque in Egypt

- ❖ Prime Minister of India visited Egypt's historic 11th-century Al-Hakim Mosque in Cairo.
- ❖ It was restored with the help of India's Dawoodi Bohra community.
- ❖ The Mosque have intricately carved inscriptions on the walls and doorways of the mosque which was built in 1012.
- ❖ The Bohra community are known to have originated from Egypt and later shifted to Yemen.
- ❖ They are establishing a presence in India in the 11th century.

