

March - 07

## TNPSC BITS

- ❖ Tamil Nadu's Chief Minister has launched the 'Neengal Nalama?' scheme, where government officials would interact with citizens to gather feedback on various state initiatives
- ❖ The National Institute of Technical Teachers Training and Research (NITTTR), Chennai, was converted as a deemed to be university under Section 3 of the University Grants Commission Act.
- ❖ The Ministry of Tourism has included the UNESCO World Heritage sites of Ajanta and Ellora caves in Chhatrapati Sambhaji Nagar (Maharashtra) in its Swadesh Darshan Scheme II.
- ❖ The Gujarat Forest department is setting up India's first cheetah conservation breeding centre in Banni Grasslands Reserve, Kutch district.
  - The centre will have open-to-air isolation enclosures and aims to bring cheetahs to Gujarat early next year.<sup>3</sup>
- ❖ Zoho Corporation had introduced a modern point of sale (PoS) solution named Zakya, for retail stores in the small and medium segments to streamline their day-to-day operations.
- ❖ The 4 days long Tawi Festival showcases the Dugger culture which is held on the bank of the Tawi River in Jammu.
- ❖ Sweden will soon be invited to accede to the Washington Treaty and officially become NATO's 32<sup>nd</sup> member.

## TAMIL NADU

### Neolithic Child Burial Site



- ❖ University of Madras researchers have discovered a neolithic site at Chettimedu Pathur near Chennai.

- ❖ The site yielded the burial remains of a child, along with a variety of cultural artifacts, including rare burnished grey ware and Chola-era coins.
- ❖ The site could be from 2500 BCE to 3000 BCE.

## NATIONAL

### Development of Six Mega Ports by 2047



**Ports Upgrade**

- ▶ **Ports Master Plan** in the works with respect to vision 2047
- ▶ **Target** 10,000 mtpa port handling capacity
- ▶ **In line** with GDP estimates & export growth
- ▶ **Lower** turnaround time of ships
- ▶ **Improve** handling capacity of domestic ports
- ▶ **Focus** on improving non-major ports with vacant land

**What will it entail**

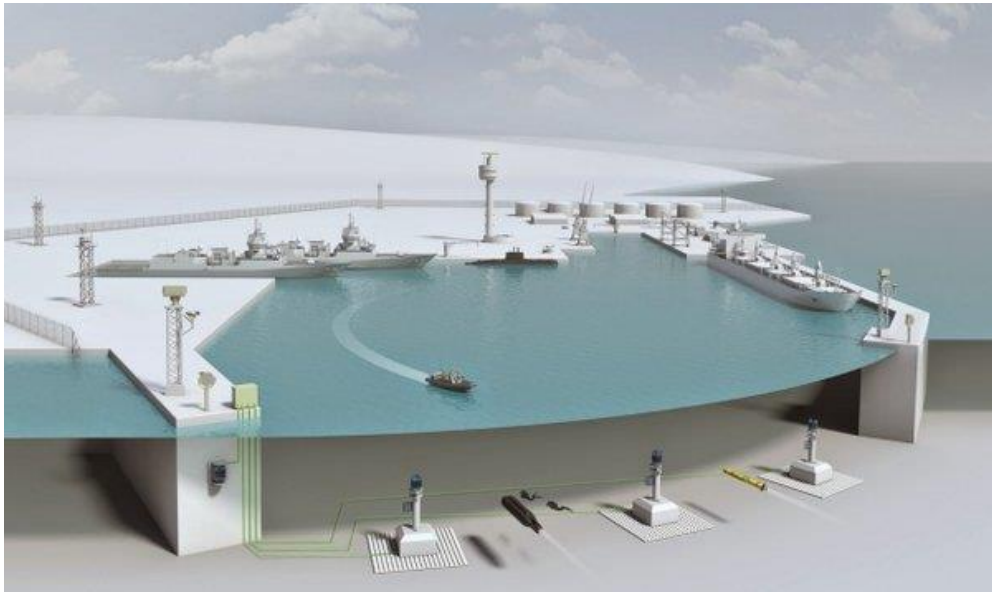
- Revive shut down ports
- Introduce cargo handling at passenger only ports
- Bring in private sector to improve efficiency

- ❖ India aims to develop six mega ports by 2047 as part of its ambitious maritime expansion plans.
- ❖ It will significantly be increasing its cargo handling capacity outlined in the Amrit Kaal Vision 2047.
- ❖ Port development will focus on two categories
- ❖ Capacity Exceeding 500 million Tonnes Per Annum
  - Deendayal and Tuna Tekra Port Cluster (Gujarat)
  - Jawaharlal Nehru – Vadhavan Port Cluster (Maharashtra)
- ❖ Capacity Exceeding 300 million Tonnes Per Annum
  - Cochin – Vizhinjam Port Cluster (Kerala)
  - Galathea South Bay Port (Andaman)

- Chennai – Kamarajar – Cuddalore Port Cluster (Tamilnadu)
- Paradip and Other Non-Major Ports Cluster (Odisha)

### **Underwater Harbor Defence and Surveillance System**

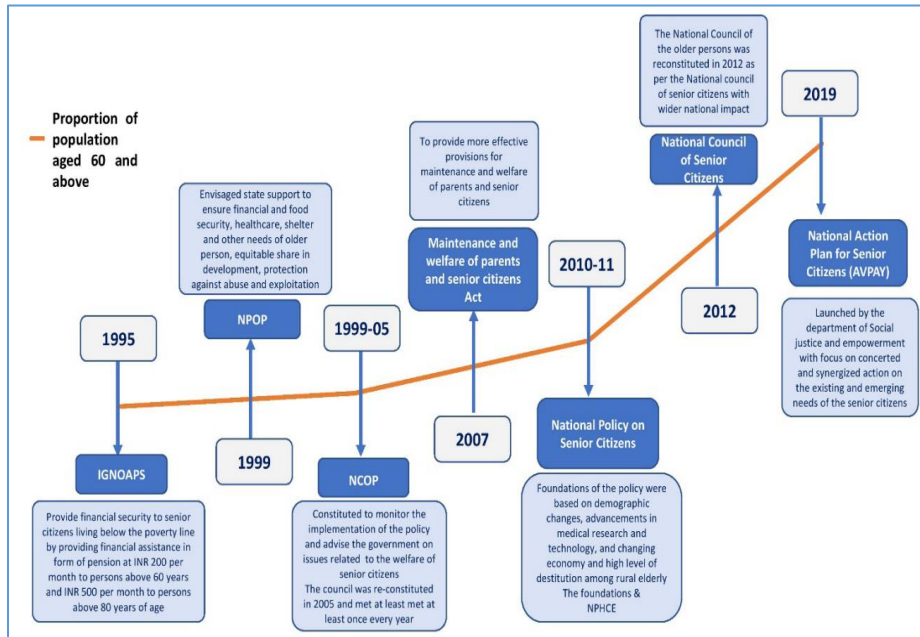
- ❖ A Precision Approach Radar (PAR) was inaugurated at INS Utkrosh in Andaman and Nicobar Islands.
- ❖ It will enable “highly accurate horizontal and vertical guidance to land an aircraft safely in low visibility conditions, such as heavy rain and fog”.
- ❖ The Integrated Underwater Harbour Defence and Surveillance System (IUHDSS) also inaugurated at Naval Jetty, Port Blair.
- ❖ It is capable of detecting, identifying & tracking surface and under water targets in vicinity of naval jetty thereby enhancing security of Port Blair harbour.



### **Senior Care Reforms in India**

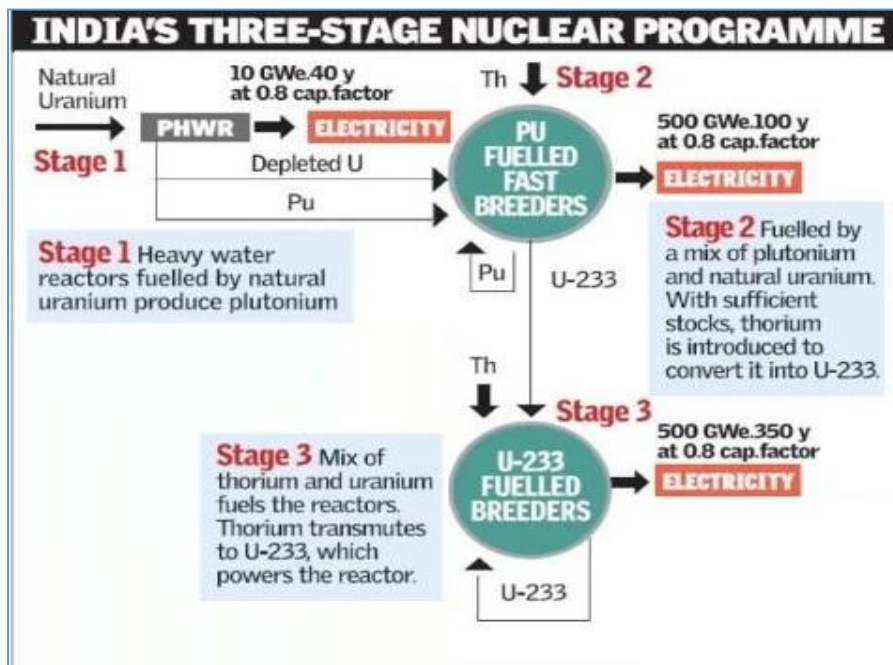
- ❖ NITI Aayog, has published a report titled 'Senior Care Reforms in India - Reimagining the Senior Care Paradigm'.
- ❖ This report underscores the essential steps required to empower elderly citizens financially and integrate them more fully into the nation's economic fabric.
- ❖ The recommendations in this paper categorize the specific interventions needed in terms of empowerment, service delivery, and their inclusions under four core areas: Health, Social, Economic/ Financial, and Digital.
- ❖ The elderly in India currently comprises a little over 10% of the population, translating to about 104 million.

❖ It is projected to reach 19.5% of the total population by 2050.



## SCIENCE AND TECHNOLOGY

### Indigenous prototype fast breeder reactor



❖ The fuel loading was started at the 500 MWe Prototype Fast Breeder Reactor (PFBR) at Kalpakkam in Tamil Nadu.

- ❖ Fast breeder reactors form the second stage of India's three-stage nuclear programme.
- ❖ The PFBR is a machine that produces more nuclear fuel than it consumes.
- ❖ The operationalisation of the PFBR will mark the start of stage II of India's three-stage nuclear power programme.
- ❖ In the first, India used pressurised heavy water reactors (PHWRs) and natural uranium-238 (U-238).
- ❖ It contains minuscule amounts of U-235, as the fissile material.
- ❖ The reactions produce plutonium-239 (Pu-239) and energy.
- ❖ In stage II, India will use Pu-239 together with U-238 in the PFBR to produce energy, U-233, and more Pu-239.
- ❖ In stage III, Pu-239 will be combined with thorium-232 (Th-232) in reactors to produce energy and U-233.
- ❖ Homi J. Bhabha had designed the three-stage programme because India hosts roughly a quarter of the world's thorium.

## ENVIRONMENT

### World's Tiniest Frog

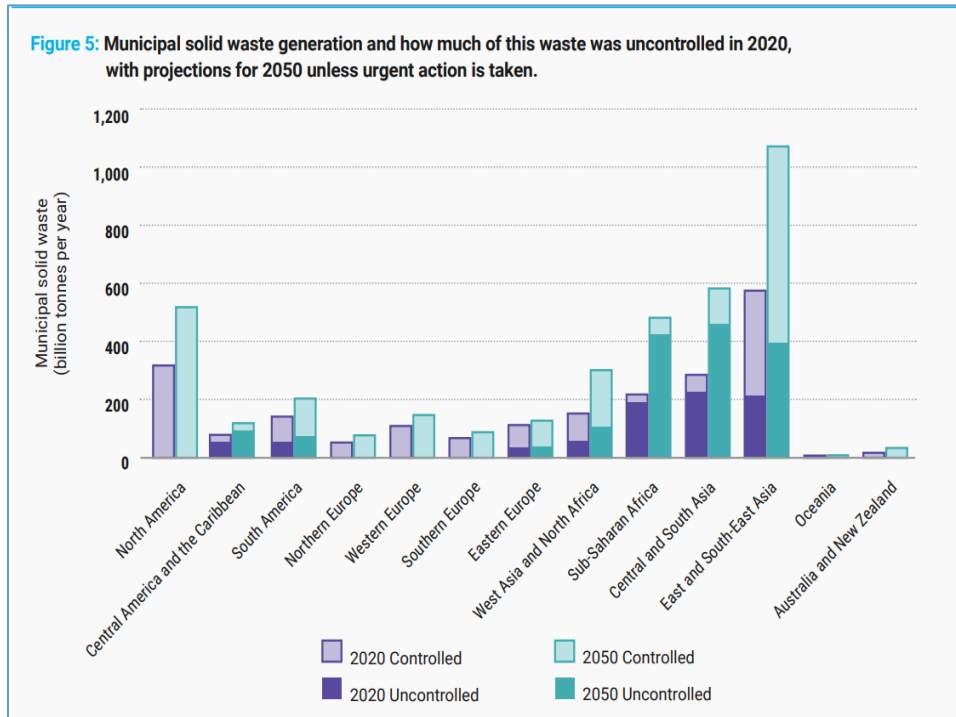


- ❖ Scientists have discovered a frog the size of a pea hiding in a Brazilian forest.
- ❖ The 'flea toad' measures just 7.1 millimeters, on average, could be the world's smallest vertebrate.

- ❖ The little frog's top-facing back blends into its surroundings in a 'ground color' of varying browns.
- ❖ The Brazilian flea toad, or *Brachycephalus pulex*, was first discovered in 2011.
- ❖ It's almost one millimetre smaller than the next smallest frog.

## REPORTS AND INDICES

### Global Waste Management Outlook 2024



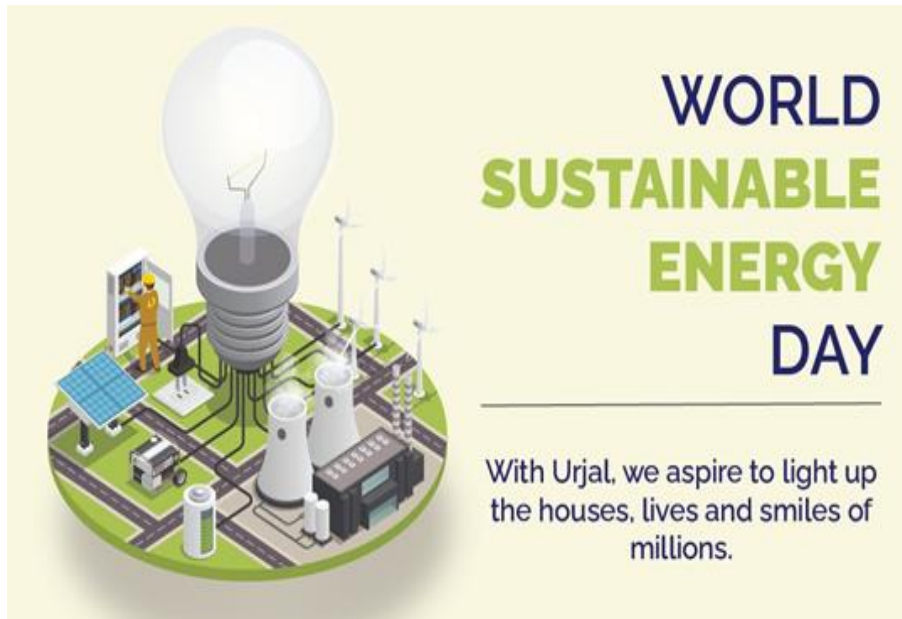
- ❖ The UNEP (United Nations Environment Programme) and ISWA (International Solid Waste Association) recently published 'Global Waste Management Outlook 2024'.
- ❖ Urban solid waste is predicted to rise from 2.3 billion to 3.8 billion tonnes by 2050
- ❖ Over 2.7 billion people in the Global South and developing regions of the world not having their waste collected.
- ❖ Two billion of the 2.7 billion live in rural areas, while 700,000 live in cities.
- ❖ About 540 million tonnes of municipal solid waste, an equivalent of 27 per cent of the global total waste, is not being collected.
- ❖ In 2020, the global direct cost of waste management was an estimated \$252 billion.

- ❖ By 2050 this global annual cost could almost double to a staggering \$640.3 billion.

## IMPORTANT DAYS

### World Sustainable Energy Day 2024 - March 02

- ❖ It promotes the use of sustainable energy sources in day-to-day life.
- ❖ It also contributes to showcasing innovative and effective sustainable energy technologies.
- ❖ It was first held in 1992 by the Austrian Energy Agency (AEA).
- ❖ The theme for 2024 is "Energy transition now – fast, smart, resilient!".



### World Wildlife Day 2024 - March 03

- ❖ The Convention on International Trade in Endangered Species of Wild Fauna and Flora (CITES) was signed on this day in 1973.
- ❖ It is celebrated to promote sustainable practices that can help conserve biodiversity and raise public awareness of the need to protect and care for animals.
- ❖ It was first proposed by Thailand to the UN General Assembly in 2013.
- ❖ The General Assembly adopted a resolution on 20 December 2013, designating this day.

- ❖ This year's theme is "Connecting People and Planet: Exploring Digital Innovation in Wildlife Conservation".



### **World Hearing Day 2024 - March 03**

- ❖ It aims to raise awareness about preventing deafness and hearing loss and promoting ear and hearing care around the world.
- ❖ This day was first recognised by WHO in 2007.
- ❖ Previously, the day was recognised as International Ear Care Day.
- ❖ After 2016, WHO changed the name to World Hearing Day.
- ❖ The theme for 2024 is "Changing mindsets: Let's make ear and hearing care a reality for all."

