

March - 08

## TNPSC BITS

- ❖ India's first government naturopathy hospital of 250 beds with multi-disciplinary research and extension service centre, was inaugurated at Yewalewadi under the "Nisarg Gram Project" of National Institute of Naturopathy in Pune.
- ❖ Indian shuttlers have bagged 18 medals, including three gold, four silver and 11 bronze, at the BWF Para Badminton World Championships 2024, in Pattaya, Thailand.
- ❖ The Union Cabinet approved the establishment of International Big Cat Alliance (IBCA) with headquarters in India with a one-time budgetary support of Rs.150 crore.
- ❖ The Samudra Laksamana (Bilateral Maritime Exercise) between India and Malaysia was recently concluded off the coast of Visakhapatnam, Andhra Pradesh.
- ❖ Sub-inspector Suman Kumari made history by joining the Border Security Force (BSF) as its first female sniper.
- ❖ A first of its kind jet suit race was organised by the Dubai Sports Council and the Gravity company.

## NATIONAL

### Equal opportunity policy for transgender



- ❖ The Indian government has announced a first of its kind equal opportunity policy for transgender people.
- ❖ The policy will prohibit the disclosure of a trans person's gender identity without their consent as the Transgender Persons (Protection of Rights) Rules 2020 requires.

- ❖ This will encourage the fair treatment of trans people and create workplaces free from discrimination, harassment and bias.
- ❖ The policy seeks to ensure a trans employee's the right to choose a pronoun, gender and a chosen name — every business.

### Potash derived from molasses



- ❖ The Sugar mills can now sell potash derived from molasses (PDM) to fertiliser companies to earn additional revenue.
- ❖ And also, they can receive nutrient-based subsidies on it.
- ❖ PDM, a potassium-rich fertiliser, is a by-product of the sugar-based ethanol industry.
- ❖ It is derived from ash in molasses-based distilleries.
- ❖ India currently imports 100% of the potash it needs for fertilisers, in the form of muriate of potash (MOP).
- ❖ Distilleries produce a waste chemical called spent wash during ethanol production, which is burned to produce ash.
- ❖ This ash can be processed to produce PDM, which has 14.5% potash content.
- ❖ This can be used by farmers as an alternative to MOP, which is 60% potash.

### Swayam Plus Platform

- ❖ The Union Ministry of Education launched the 'SWAYAM Plus' platform to offer courses developed collaboratively with the industry.

- ❖ IIT Madras will be operating the ‘SWAYAM Plus’ Platform.
- ❖ It seeks to enhance the employability of both college students and lifelong learners.
- ❖ The industry-academia partnership would combine the academic rigour of educational platform with the real-world expertise and relevance offered by industry partners.



### **India's 3rd aircraft museum**

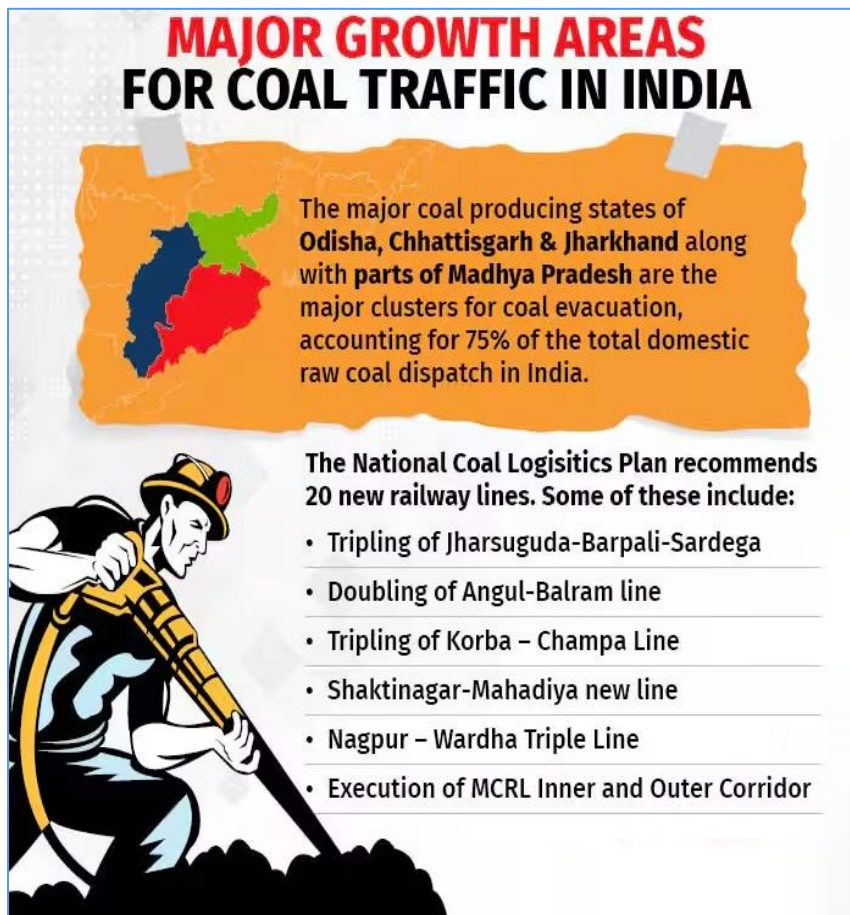


- ❖ The iconic Indian Navy's decommissioned aircraft TU-142M and made as a aircraft museum in Kakinada, Andhra Pradesh.

- ❖ This museum marks the third of its kind, joining the ranks of Visakhapatnam and Kolkata.
- ❖ Also, this is the second such aircraft museum in the State.

### **Coal Logistics Plan and Policy**

- ❖ The Indian government released the Coal Logistics Plan and Policy.
- ❖ It is aimed at ramping up coal supplies, especially to power generation plants.
- ❖ Coal logistics refers to the carriage of coal from the mines to their destinations.
- ❖ The objective of the policy is to make coal logistics cheaper, faster and cleaner.

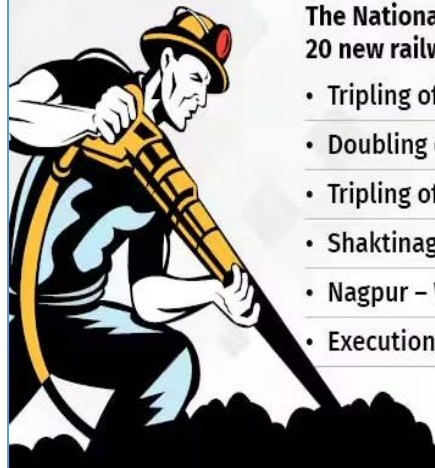


**MAJOR GROWTH AREAS FOR COAL TRAFFIC IN INDIA**

The major coal producing states of **Odisha, Chhattisgarh & Jharkhand** along with **parts of Madhya Pradesh** are the major clusters for coal evacuation, accounting for 75% of the total domestic raw coal dispatch in India.

The National Coal Logistics Plan recommends 20 new railway lines. Some of these include:

- Tripling of Jharsuguda-Barpali-Sardega
- Doubling of Angul-Balram line
- Tripling of Korba – Champa Line
- Shaktinagar-Mahadiya new line
- Nagpur – Wardha Triple Line
- Execution of MCRL Inner and Outer Corridor



### **Cinema halls accessibility guidelines**

- ❖ The Information and Broadcasting Ministry has released the draft Guidelines of Accessibility Standards in the Public Exhibition of Feature Films in Cinema Theatres for persons with hearing and visual impairment.



- ❖ This is applicable for those feature films that are certified by the Central Board of Film Certification (CBFC) for public exhibition in cinema halls/movie theatres for commercial purposes.
- ❖ It has the information and assistive devices needed by persons with disabilities to enjoy films in cinema theatres.



सत्यमेव जयते

सूचना एवं  
प्रसारण मंत्रालय  
MINISTRY OF  
**INFORMATION AND  
BROADCASTING**

**India's population under extreme poverty**

	Total population	Number of people living in extreme poverty	%
	(in crore)		
2016	132.37	7.59	5.7
2018	135.29	6.26	4.6
2020	138.21	6.73	4.9
2022	140.85	4.69	3.3
2024	143.48	3.44	2.4

- ❖ As per the World Poverty Clock, India has managed to bring down 'extreme poverty' below 3 per cent of its population.

- ❖ The World Poverty Clock provides real-time poverty estimates through 2030 for nearly every country in the world.
- ❖ The clock has taken \$2.15 a day income to present the finding.
- ❖ Accordingly, nearly 3.44 crore people are living in extreme population in 2024 against 4.69 crore in 2022.
- ❖ As a share of total population, number of people living in extreme poverty has come down to 2.4 per cent from 3.3 per cent in 2022.

## SCIENCE AND TECHNOLOGY

### Juice Jacking

**Beware of Juice Jacking**

Attackers use USB charging ports available at public places to install malware, steal data or even take complete control of your device.

**Tips to stay safe**

- Disable data transfer feature on your mobile phone while charging
- Get a charge only cable instead of cable supporting charging and data transfer capabilities
- Try to carry a power bank
- If possible, switch off the device while charging from public ports

- ❖ The Reserve Bank of India (RBI) has issued a cautionary message to mobile phone users advising them against charging their devices using public ports.
- ❖ The warning comes amidst growing concerns over the security risks posed by a cyberattack known as “juice jacking”.

- ❖ Juice jacking is a form of cyberattack where hackers tamper with public USB charging ports.
- ❖ They infecting them with malware or making hardware changes that allow them to steal data from devices connected to them.

## ENVIRONMENT

### Rediscovery of Brazilian holly tree

- ❖ After nearly 200 years without a confirmed sighting, a rare Brazilian tree species called the Pernambuco holly has been found in northeastern Brazil.
- ❖ The Pernambuco holly tree (*Ilex sapiiformis*) can grow to a height of 12 meters (nearly 40 feet).
- ❖ The trees live in vast area of Atlantic Forest.
- ❖ But now less than 7% of its original forest biome remains mostly in small fragments.
- ❖ The holly is one of the 25 “most wanted” lost plant and animal species targeted for rediscovery by the Search for Lost Species project.
- ❖ It’s the ninth that’s been “rediscovered” since the initiative began in 2017.



### Metal Mining Contamination on Floodplains

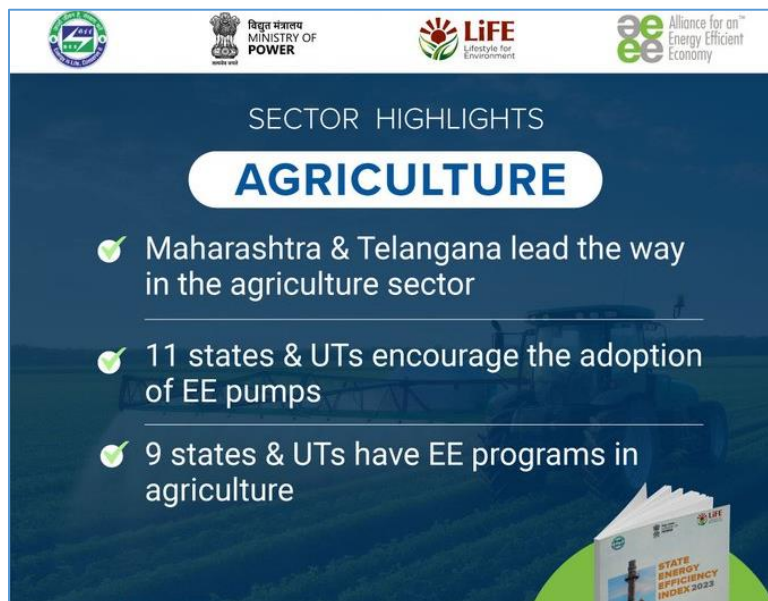
- ❖ Recent studies estimates that approximately 23 million people worldwide live on floodplains contaminated by toxic waste from metal mining activity.
- ❖ It includes contamination from active and inactive metal mining sites, including tailings storage facilities.
- ❖ The contamination affects around 479,200 kilometers of river channels.

- ❖ And it covers 164,000 square kilometers of floodplains globally.
- ❖ These areas support 5.72 million livestock.
- ❖ And they encompass over 65,000 square kilometers of irrigated land.



## STATES

### State Energy Efficiency Index 2023



- ❖ The State Energy Efficiency Index (SEEI) is a measurement tool used to assess and compare the annual energy efficiency performance of different states/UTs.
- ❖ The most improved states in this assessment are Maharashtra and Haryana.
- ❖ Karnataka is top-performer and Andhra Pradesh is runner-up in implementation of energy efficiency policies.



- ❖ The Chandigarh administration has bagged the prestigious first prize in Group 4 category.
- ❖ Chandigarh won this for the second year in a row for its strong commitment to eco-friendly practices for a more energy conscious future.

## IMPORTANT DAYS

### National Safety Day 2024 - March 04



- ❖ This day is marking the establishment of the National Safety Council of India (NSC) by the Ministry of Labour in 1966.
- ❖ The council's primary objective is to advocate for national security, public health, and environmental protection.
- ❖ This day was first observed in 1972.
- ❖ This year's theme was "Focus on Safety Leadership for ESG Excellence".

