

March - 31

TNPSC BITS

- ❖ Life Insurance Corporation of India (LIC) has emerged as the strongest insurance brand in the world.
 - It is followed by the Cathay Life Insurance from Taiwan and Australia based NRMA Insurance.
- ❖ The Singapore-flagged container ship "Dali" collided with one of the pillars of the Francis Scott Key Bridge in Baltimore, USA.
- ❖ President of Ramakrishna Mission Swami Smaranananda passed away recently.
 - He became the 16th president of the order in 2017.
- ❖ International Transgender Day of Visibility (Trans Day of Visibility) is annually observed on March 31st for celebrating transgender people and raising awareness of discrimination faced by transgender people worldwide.

NATIONAL

50 years of Chipko Movement



- ❖ The Chipko movement, which began in Uttarakhand (Chamoli Gopeshwar) in early 1973, marks its 50th anniversary.
- ❖ It involved villagers, particularly women, protesting against deforestation and commercial logging by hugging trees to prevent their felling.
- ❖ The movement was named Chipko, which means "to hug" in Hindi.

- ❖ Environmental activists like Sunderlal Bahuguna and Chandi Prasad Bhatt played instrumental roles in mobilizing local communities and garnering national and international support for the movement.
- ❖ This anniversary serves as a reminder of the power of ordinary citizens to effect change and inspires ongoing environmental movements worldwide.

Afanasy Nikitin Seamount

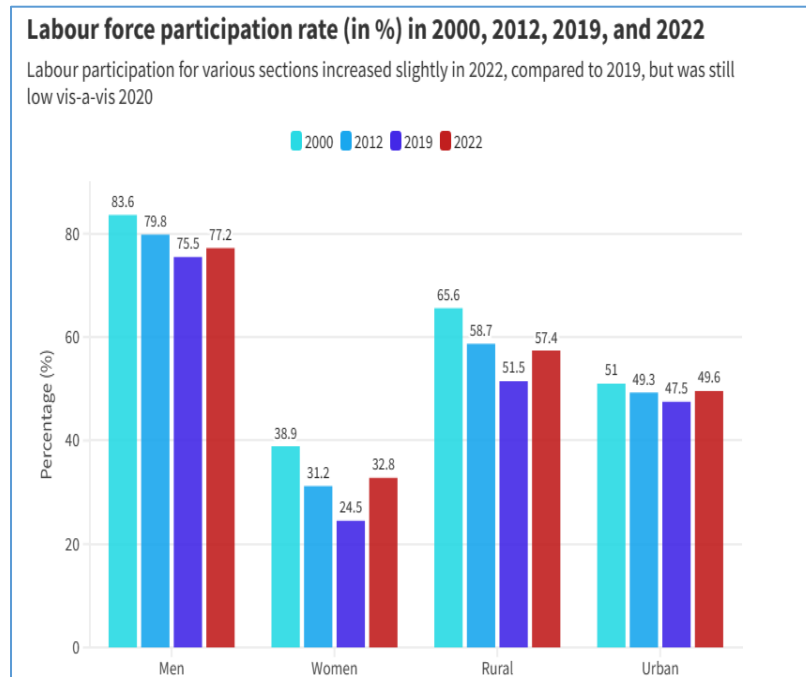


- ❖ India applied to the International Seabed Authority (ISBA), Jamaica, for rights to explore two vast tracts in the Indian Ocean seabed that aren't part of its jurisdiction.
- ❖ The application to explore one of these regions, a cobalt-rich crust long known as the Afanasy Nikitin Seamount (AN Seamount), is a gambit by India.
- ❖ Rights to the region have already been claimed by Sri Lanka under a separate set of laws.
- ❖ But India's application is part-motivated by reports of vessels by China undertaking reconnaissance in the same region.
- ❖ The AN Seamount is a structural feature (400 km-long and 150 km-wide) in the Central Indian Basin.
- ❖ It is located about 3,000 km away from India's coast.
- ❖ From an oceanic depth of about 4,800 m, it rises to about 1,200 m rich in deposits of cobalt, nickel, manganese and copper.

- ❖ Countries have exclusive rights up to 200 nautical miles, and its underlying seabed from their borders.
- ❖ Some ocean-bound states may have a natural stretch of land, connecting their border and the edge of the deep ocean that extends beyond this 200, as part of their so-called continental shelf.

ECONOMY

India Employment Report 2024



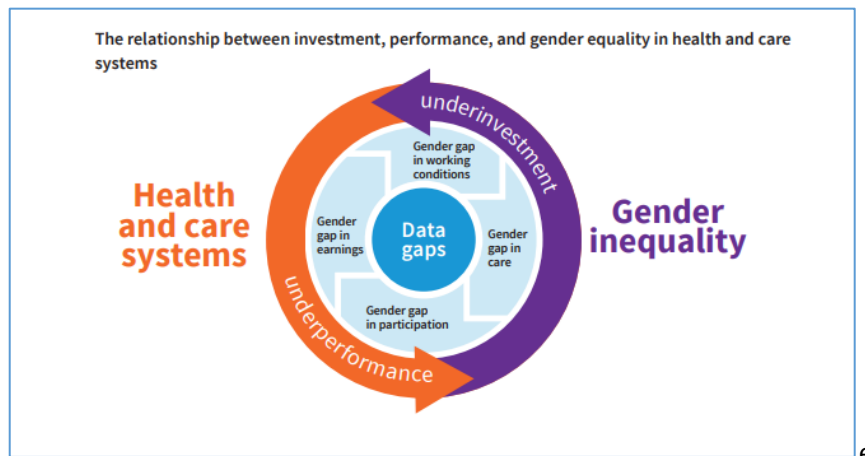
- ❖ India Employment Report 2024 has been released by the International Labour Organisation (ILO) and the Institute of Human Development (IHD).
- ❖ In 2022, India's youth accounted for 83% of the country's total unemployed population.
- ❖ The share of educated youngsters among all jobless people, increased from 54.2% in 2000 to 65.7% in 2022.
- ❖ Also, at present there are more women (76.7%) than men (62.2%) among the educated but unemployed youths.
- ❖ In 2000, half of the total employed youth population was self-employed, 13% had regular jobs, while the remaining 37% had casual jobs.
- ❖ Almost 90% of workers remain engaged in informal work, while the share of regular work, which steadily increased after 2000, declined after 2018.

- ❖ 75% of youth unable to send emails with attachments, 60% unable to copy and paste files, and 90% unable to put a mathematical formula into a spreadsheet.
- ❖ India will add 7-8 million (70-80 lakh) youths to its labour workforce during the next decade.

REPORTS AND INDICES

Fair Share for Health and Care Report

- ❖ The World Health Organization recently released the report titled 'Fair share for health and care: gender and the undervaluation of health and care work'.
- ❖ Women comprise 67 per cent of the global health and social care workforce.
- ❖ In addition to this paid work, it has been estimated that women perform an estimated 76% of all unpaid care activities.
- ❖ Globally, on average, 90 per cent of women's earnings were directed towards their families' well-being, compared to only 30-40 per cent of men's.
- ❖ In India, women spent around 73 per cent of their total daily working time on unpaid work.
- ❖ But men spent around only 11 per cent of their daily working time on unpaid work.



Hurun Research Institute Report

- ❖ Mumbai has overtaken Beijing as Asia's billionaire capital, according to the latest report from the Shanghai-based Hurun Research Institute.
- ❖ Mumbai boasts 92 billionaires, securing its position as Asia's third billionaire capital, trailing behind New York (119) and London (97).

- ❖ India's economy is growing at 7.5% in 2023.
- ❖ It facilitated the addition of 94 billionaires, marking the country's highest count since 2013.
- ❖ China is maintaining the top spot with 814 billionaires in the report.
- ❖ But it experienced a decline in ultra-rich individuals, with 155 fewer billionaires compared to 2022.
- ❖ The list encompasses 3,279 individuals from 73 countries, highlighting the global distribution of wealth.

Hurun Rich List 2024 Global Top 10

Rank	Name	Wealth (\$bn)	Change YOY	Main Company	Age	Country of Residence
1	Elon Musk	231	47%	Tesla	52	USA
2	Jeff Bezos	185	57%	Amazon	60	USA
3	Bernard Arnault	175	-13%	LVMH	74	France
4	Mark Zuckerberg	158	132%	Meta	39	USA
5	Larry Ellison	144	44%	Oracle	79	USA
6	Warren Buffett	144	24%	Berkshire Hathaway	93	USA
7	Steve Ballmer	143	41%	Microsoft	67	USA
8	Bill Gates	138	26%	Microsoft	68	USA
9	Larry Page	123	64%	Alphabet	50	USA
10	Mukesh Ambani	115	40%	Reliance Industries	66	India

PERSONALITIES, AWARDS, AND EVENTS

Abel Prize 2024

- ❖ The Norwegian Academy of Science and Letters has awarded the 2024 Abel Prize to Michel Talagrand of the French National Center for Scientific Research (CNRS), Paris, France.
- ❖ This is awarded “for his groundbreaking contributions to probability theory and functional analysis, with outstanding applications in mathematical physics and statistics.”

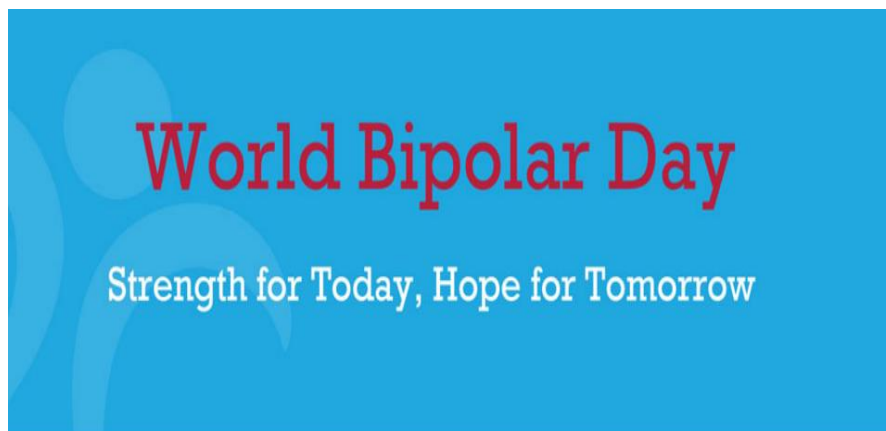


- ❖ Much of his work involves understanding and utilizing the “Gaussian distribution”, also known as the “normal distribution” or the “bell curve”.



IMPORTANT DAYS

World Bipolar Day 2024 - March 30



- ❖ This day coincides with the birthday of Vincent Van Gogh, a renowned artist who suffered from bipolar disorder.
- ❖ It aims raise awareness and eliminate the stigma associated with this life-long mental health condition affecting millions worldwide.

- ❖ It is commonly known as manic-depressive illness.
- ❖ It is characterised by episodes of extreme mood swings, including mania or hypomania and depression.
- ❖ This year's theme is #BipolarStrong.

Rajasthan Day 2024 - March 30

- ❖ At the time of independence, there were a total of 22 princely states in Rajasthan.
- ❖ The state was formed on March 30th, 1949 when Rajputana was merged into the Dominion of India.
- ❖ Jaipur, being the largest city, was declared as the capital of the state.
- ❖ The process of merger of the erstwhile princely states was lasted from 18 March 1948 to 1 November 1956.

