

May - 18

NATIONAL

GST Registration Based on Aadhaar



- ❖ Telangana, Tamil Nadu, and Karnataka are among the five states that have indicated interest in utilising Aadhaar-based verification for GST registration.
- ❖ Currently, Gujarat and Andhra Pradesh, and the Union Territory of Puducherry have launched the Aadhaar authentication of taxpayers on a pilot basis.
- ❖ GST authorities have so far been using OTP-based Aadhaar authentication to establish the identity of the applicants, seeking registration.

BHISHM portable cubes

- ❖ The Indian Air Force tested BHISHM portable cubes at Agra for airdrops from the aircraft.
- ❖ This is the first time the Indian Air Force tested this portable hospital.
- ❖ This test was performed so that the portable hospital can be deployed to cater to emergencies anywhere.
- ❖ These portable cubes are a part of the broader initiative named "Project BHISHM" - Bharat Health Initiative for Sahyog, Hita and Maitri.

- ❖ It is tailored to treat up to 200 casualties, emphasising rapid response and comprehensive care.



Center for World University Rankings 2024

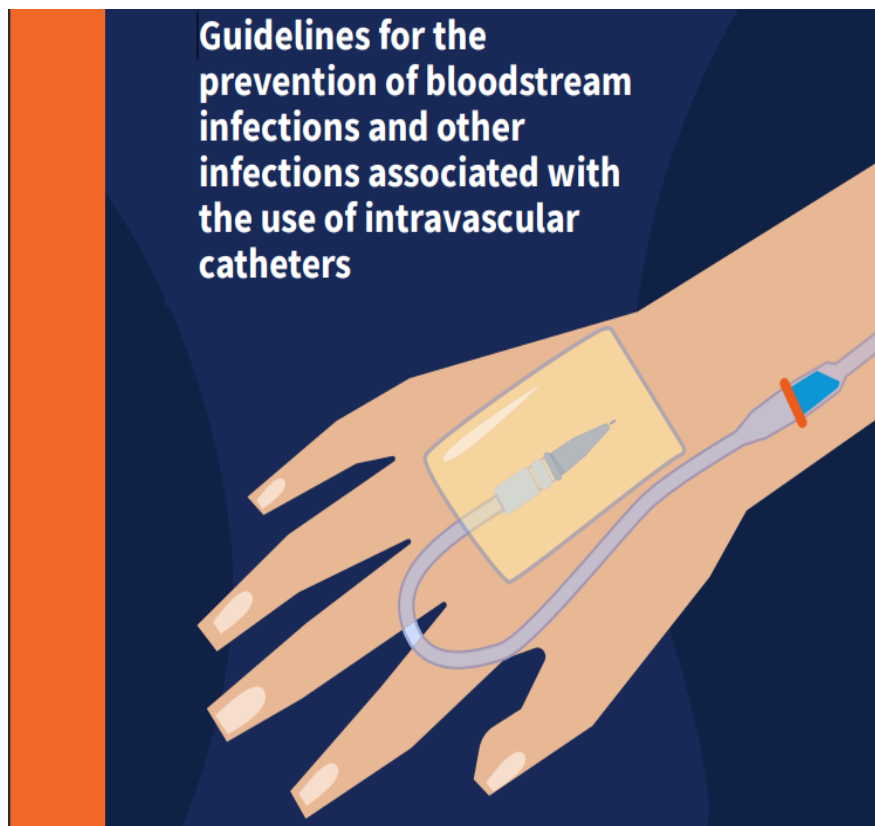
World Rank	Institution	Location	National Rank	Education Rank	Employability Rank	Faculty Rank	Research Rank	Score
410 Top 2%	Indian Institute of Management Ahmedabad	India	1	367	11	-	-	75.4
501 Top 2.4%	Indian Institute of Science	India	2	323	890	-	476	74.3
568 Top 2.8%	Indian Institute of Technology Bombay	India	3	-	330	-	560	73.7
582 Top 2.8%	Indian Institute of Technology Madras	India	4	-	187	-	614	73.5
606 Top 2.9%	Tata Institute of Fundamental Research	India	5	-	-	-	573	73.3
616 Top 3%	Indian Institute of Technology Delhi	India	6	-	155	-	685	73.2
622 Top 3%	Delhi University	India	7	532	168	-	675	73.2
704 Top 3.4%	Indian Institute of Technology Kharagpur	India	8	-	518	-	681	72.5
798 Top 3.9%	Academy of Scientific & Innovative Research	India	9	-	-	-	761	71.8
823 Top 4%	Panjab University	India	10	527	745	-	794	71.6

- ❖ Indian Institute of Management (IIM) Ahmedabad secured the top rank among the best performing institutes across India.
- ❖ 64 other universities and institutes from India made it to the 2024 edition of the Global 2000 list.

- ❖ IIM Ahmedabad climbed 9 spots to secure 410th rank.
- ❖ Indian Institute of Science dropped 7 places to sit at 501st position.
- ❖ IIT Bombay plunged 14 spots and stood at 568th rank.
- ❖ IIT Delhi and IIT Kharagpur were also among top ten best performers of the year.
- ❖ IIT Madras secured 582nd position by descending 12 spots.
- ❖ Tata Institute of Fundamental Research secured 606th rank as it descended 26 spots.

INTERNATIONAL

New guidelines on use of catheter



- ❖ WHO has published the first global guidelines to prevent bloodstream and other infections caused by use of catheter placed in minor blood vessels during medical procedures.
- ❖ Poor practices in the insertion, maintenance, and removal of these catheters carry a high risk of introducing germs directly to the bloodstream.
- ❖ It may lead to serious conditions such as sepsis, and difficult-to-treat complications in major organs like the brain and kidneys.

- ❖ Soft tissue infections at the insertion site of the catheter can also occur.
- ❖ WHO estimated that between 2000–2018, average mortality among patients affected by health care-associated sepsis was 24.4%.
- ❖ It was increasing to 52.3% among patients treated in intensive care units.
- ❖ The new guidelines include 14 good practice statements and 23 recommendations on key areas for health workers.

ECONOMY

India's top trading partner in FY24



- ❖ China has emerged as India's largest trading partner in the FY 2023-24 with \$118.4 billion two-way commerce.
- ❖ It narrowly edging past the US, according to the data of economic think tank GTRI.
- ❖ The bilateral trade between India and the US stood at \$118.3 billion in 2023-24.
- ❖ India's exports to China rose by 8.7 per cent to \$16.67 billion in the last fiscal.

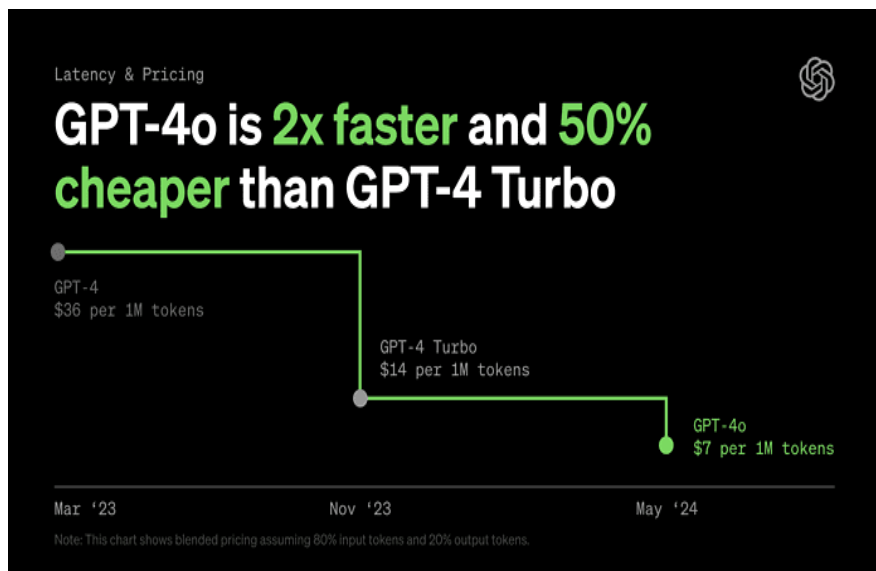


- ❖ The main sectors which recorded healthy growth in exports to that country include iron ore, cotton yarn/fabrics/madeups, handloom, spices, fruits and vegetables, plastic and linoleum.
- ❖ Meanwhile, exports to the US dipped by 1.32 per cent to \$77.5 billion in 2023-24 as against \$78.54 billion in 2022-23, while imports dipped by about 20 per cent to \$40.8 billion.

SCIENCE AND TECHNOLOGY

OpenAI GPT-4o

- ❖ OpenAI has introduced GPT-4o, a new iteration of its GPT-4 model designed to power ChatGPT with enhanced performance across text, vision, and audio capabilities.
- ❖ It offers increased speed and real-time reasoning across text, audio, and video.
- ❖ It also, introduces capabilities for mimicking human cadences in verbal responses and detecting people's moods.



ENVIRONMENT

Sea Anemone

- ❖ Scientists have found mass anemone bleaching off the Agatti island.
- ❖ Coral bleaching is not a new phenomenon in the Lakshadweep but sea anemone bleaching has been observed for the first time in the group of islands.

- ❖ Bleaching is making sea anemone more susceptible to diseases and increases mortality.
- ❖ Sea anemone is an aquatic animal marked by soft bodies and an ability to sting.
- ❖ They are close associates of corals and live rocks.



Sei Whales - Argentina

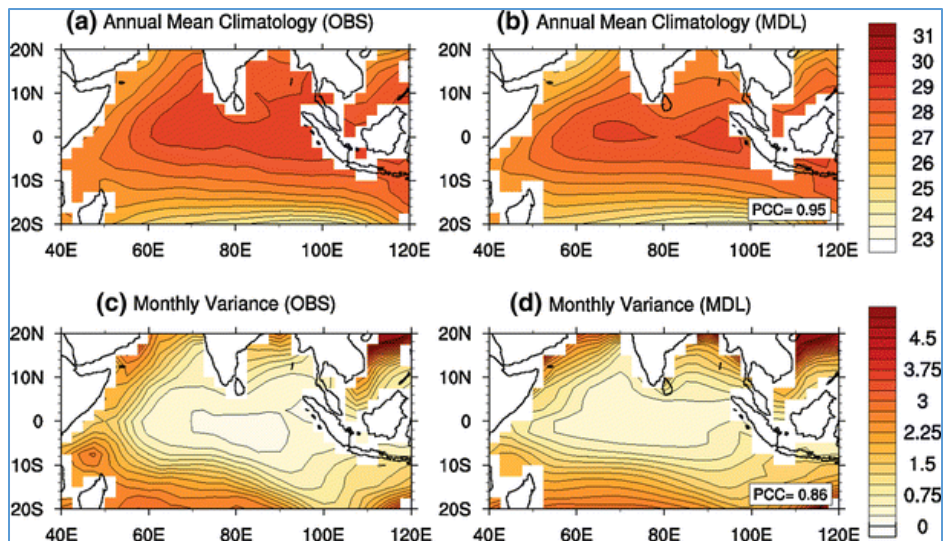


- ❖ After over a century of absence, the majestic sei whales have returned to the waters off Argentina's Patagonian coast.
- ❖ These giant blue-grey creatures were once on the brink of extinction due to relentless hunting during the 1920s and 1930s.

- ❖ Sei whales belong to the baleen whale family.
- ❖ They are characterised by their sleek, streamlined bodies, typically bluish-grey in colour.
- ❖ Sei whales can reach lengths of up to 62-66 feet and weigh up to 28-45 metric tons.

REPORTS AND INDICES

Indian Ocean Basin-Wide Index

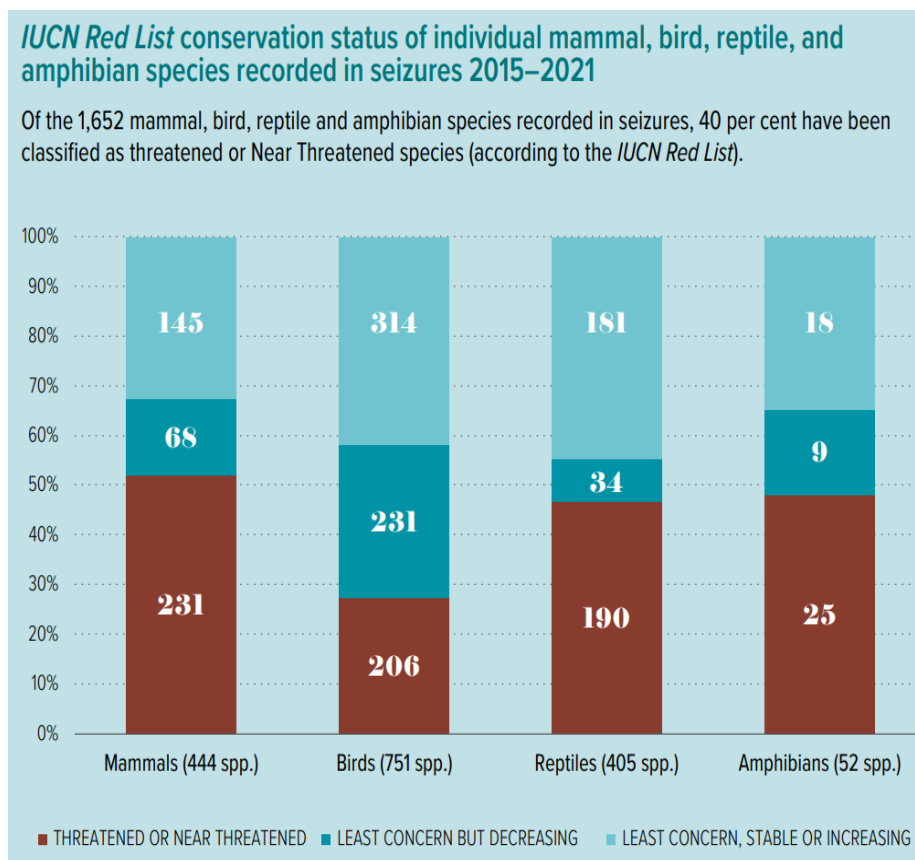


- ❖ It represents the average sea-surface temperature variations across the tropical Indian Ocean.
- ❖ It has emerged as a key indicator for predicting the magnitude and timing of dengue epidemics in each country.
- ❖ Its association with the Southern Hemisphere is stronger than that with the Northern Hemisphere.
- ❖ It has a more pronounced impact on temperatures in tropical regions.
- ❖ The link between the Indian Ocean's temperature and dengue incidence is likely due to its influence on regional temperatures through teleconnections, large-scale atmospheric patterns that can transfer heat and moisture across vast distances.

2024 World Wildlife Crime Report

- ❖ The 2024 World Wildlife Crime Report released by the United Nations Office on Drugs and Crime.

- ❖ Illegal trade in 162 countries and territories during 2015–2021, which impacted around 4,000 plant and animal species.
- ❖ 3,250 of this are listed in the CITES Appendices.
- ❖ At 29 per cent, the market for rhino horn constituted the biggest chunk among animal species.
- ❖ It was followed by the market for pangolin scales at 28 per cent, followed by the market for elephant ivory at 15 per cent.
- ❖ Other animal species most affected by the global illegal animal trade included eels (5 per cent), crocodilians (5 per cent), parrots and cockatoos (2 per cent), carnivores (2 per cent), turtles and tortoises (2 per cent), snakes (2 per cent), seahorses (2 per cent) and others (8 per cent).



STATES

Giant Shrike - first sighting in India

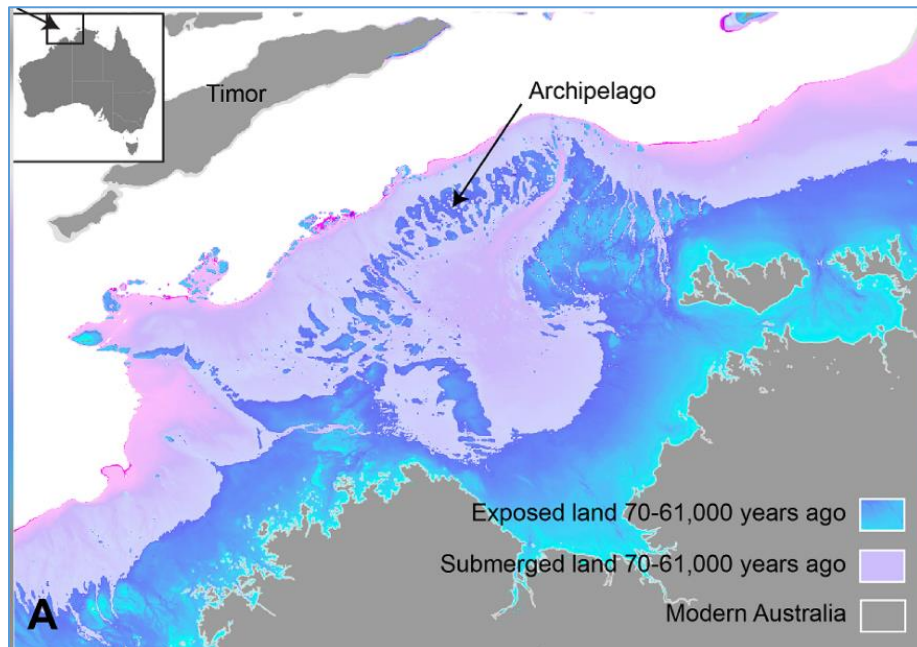
- ❖ In a first record of its sighting in India, the Giant Shrike was sighted near Tawang in Arunachal Pradesh.
- ❖ This bird commonly found in the high-altitude regions of China.

- ❖ Giant grey shrikes are found at high elevations, in open habitats with shrubs and migrate to lower elevations during winters.



MISCELLANEOUS

Sahul continent



- ❖ NEW archaeological records provide evidence of a lost Atlantis-like landscape that early humans travelled on more than 70,000 years ago.
- ❖ The supercontinent, once known as Sahul, was a landmass that was exposed thousands of years ago during the Pleistocene epoch.
- ❖ During this period, Earth was in the middle of the last ice age.



- ❖ Glaciation led to declining sea levels, exposing areas of the continental shelf that had previously been submerged.
- ❖ This revealed land connecting what is now mainland Australia to Papua New Guinea in the north and Tasmania in the south.

