



May - 29

## TNPSC BITS

- ❖ The 33<sup>rd</sup> session of the UN Commission on Crime Prevention and Criminal Justice (CCPCJ) will be held in Vienna.
- ❖ Wildlife authorities in Himachal Pradesh's Lahaul & Spiti have started surveys as part of census to estimate the population of blue sheep or bharal and the Himalayan ibex.
- ❖ The G7 declared their commitment to achieving net zero emissions by 2050 at the latest.
- ❖ Norway, Ireland, and Spain recognised a state of Palestine, marking the first time a Western European country has committed to such recognition.
- ❖ The European Union member states gave final agreement to the world's first major law for regulating artificial intelligence, as institutions around the world race to introduce curbs for the technology.
- ❖ Anasuya Sengupta becomes First Indian Actor to Win Best Actress Award Actor at the prestigious Cannes Film Festival, France.
- ❖ Recently, twelve nations signed the Zero Debris Charter at the ESA/EU Space Council, committing to making space activities debris-neutral by 2030.

## TAMIL NADU

### State's rice yield 2024

# Dip in performance

A former official of the State Agriculture Department attributes the drop in the yield rate to crop damage caused due to heavy rainfall in districts such as Tiruvarur and Ramanathapuram

Rice cultivation details of various States									
State	2022-23			2022-23			2023-24*		
	Area in lakh ha	Production in lakh tonnes	Yield in tonnes/ha	Area in lakh ha	Production in lakh tonnes	Yield in tonnes/ha	Area in lakh ha	Production in lakh tonnes	Yield in tonnes/ha
Andhra Pradesh	22.89	77.64	3.39	21.29	79.42	3.73	19.7	76.76	3.9
Karnataka	13.98	43.18	3.09	13.28	42.8	3.22	8.99	25.5	2.84
Kerala	1.96	4.87	2.49	1.92	5.96	3.1	1.17	2.54	2.17
Tamil Nadu	22.17	79.07	3.57	21.59	75.57	3.5	18.43	42.63	2.31
Telangana	36.55	124.1	3.4	46.62	158.77	3.4	45.25	160.25	3.54
All India (average)	462.79	1,294.71	2.8	478.32	1,357.55	2.84	451.52	1,238.15	2.74

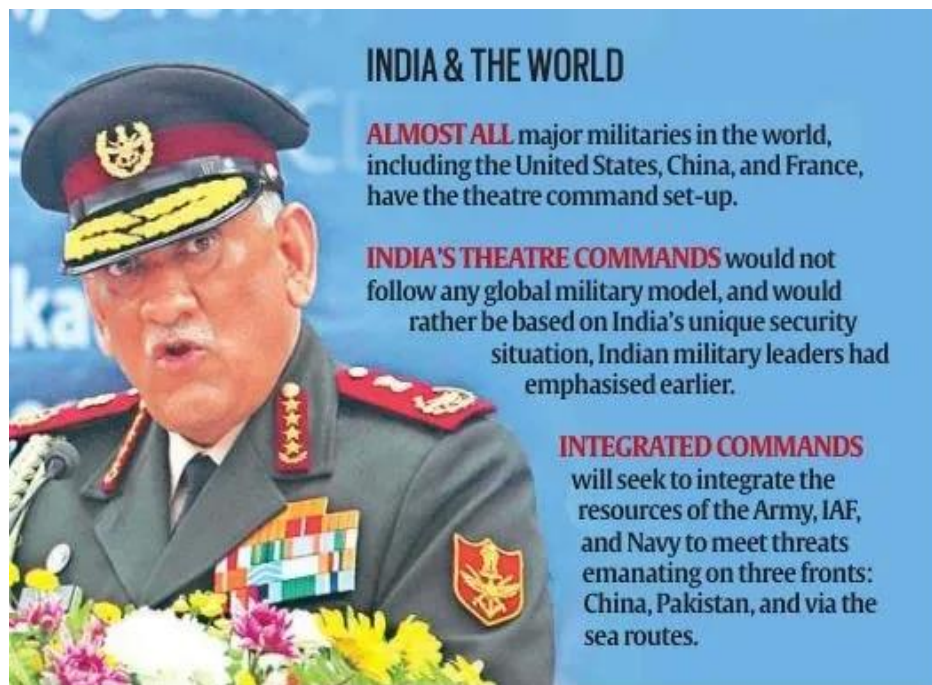
*\*Data for the year 2023-24 is based on 2<sup>nd</sup> Advance Estimates*

- ❖ Tamil Nadu's yield of rice, during 2023-24 for both the cultivation seasons of kharif and rabi, is lower than that of the national average.

- ❖ The yield for the year has been worked out to be 2.31 tonnes per hectare against the all-India average of 2.74 tonnes per hectare.
- ❖ This was a departure at least from the two previous years when the State's figure was higher than that of all-India.
- ❖ The State works out yield or productivity with regard to paddy while the Central authorities does it for rice.
- ❖ As per the norms, 100 kg of paddy is expected to produce 67 kg of raw rice, or 68 kg in case of par-boiled rice.

## NATIONAL

### Integrated theatre commands



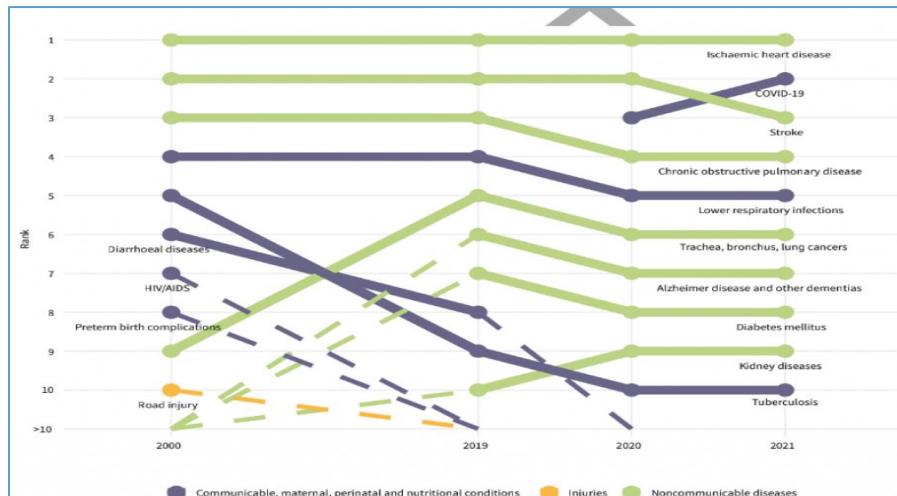
- ❖ The Indian Armed Forces have been finetuning the final draft for the creation of integrated theatre commands.
- ❖ This reform is aimed at integrating the three defence services to operate jointly in specific adversary-based theatres with defined military goals during a limited conflict or war.
- ❖ The three defence services currently operate individually under their individual operational commands.
- ❖ With the creation of the theatre commands, their personnel, assets, infrastructure, and logistics would be integrated.

- ❖ Currently, the Army and the IAF have seven commands each, while the Navy has three.
- ❖ In addition, there are two tri-service commands — the Andaman and Nicobar Command, and the Strategic Forces Command (SFC).

## INTERNATIONAL

### Fall of Life expectancy

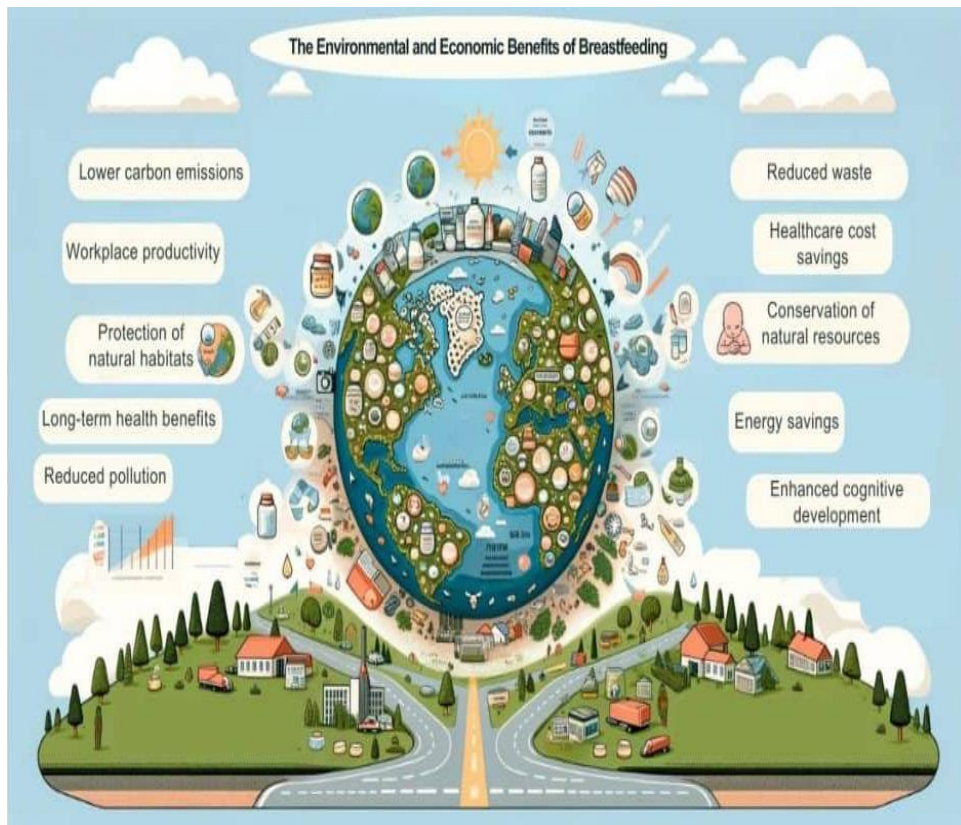
- ❖ Globally, the proportion of deaths from non-communicable diseases (NCDs) rose to 73.9 per cent by 2019.
- ❖ The share of communicable diseases dropped to 18.2 per cent.
- ❖ The estimates showed that 13 million people died of COVID-19 between 2020 and 2021.
- ❖ COVID-19 ranking third-highest worldwide as the cause of mortality globally in 2020 and second in 2021.
- ❖ Global life expectancy increased by 7.8 years from 1990 to 2019, dropping to 71.4 years according to a Lancet study.
- ❖ The COVID-19 pandemic reversed global life expectancy by 1.8 years.



### Breastfeeding and environment

- ❖ Commercial milk formula food generates around 11-14 kilograms of greenhouse gas emissions (more than that of eggs, poultry, and vegetables combined).
- ❖ It uses more than 5,000 litres of water during its life cycle.
- ❖ In contrast, breastmilk is economically valuable, leaves a low carbon footprint, and is essential for well-being.

- ❖ Breastfeeding women nourish half the world's infants and young children.
- ❖ No country, however, accounts for this care work in their GDP figures or national budgets.
- ❖ The Exclusive breastfeeding for six months saves an estimated 95-153 kg CO<sub>2</sub> equivalent per baby compared with formula feeding.
- ❖ The average water footprint of milk powder is roughly 4700 L/kg<sup>6</sup> (the equivalent of almost 140 showers).
- ❖ The milk substitutes market in India is projected to grow by 18.19% between 2024 and 2028.



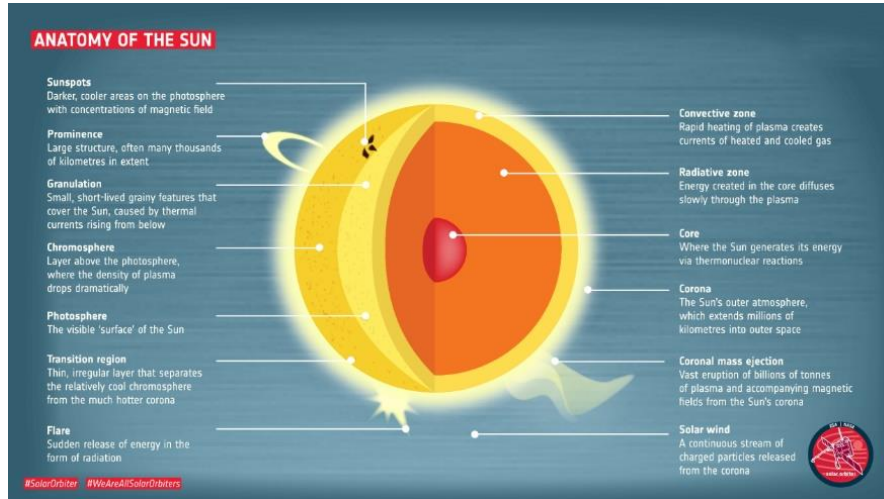
## SCIENCE AND TECHNOLOGY

## Sun's magnetic field

- ❖ Till now, scientists have believed the Sun's powerful magnetic field, responsible for solar storms that impact Earth, originated deep within the star.
- ❖ But as per the recent studies, the Sun's dynamo, the process generating the magnetic field, might be located much closer to the surface, in the star's outermost layers.

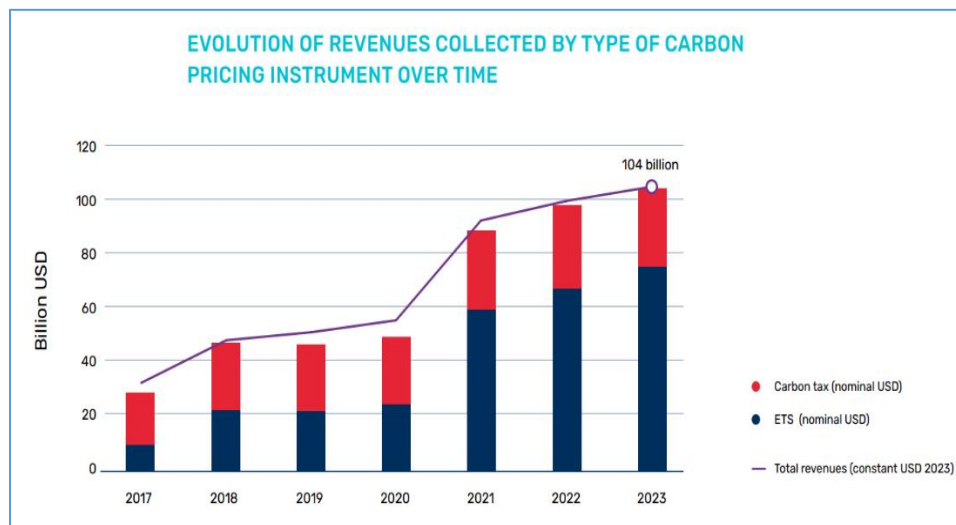


- ❖ The results showed that the magnetic field is generated about 20,000 miles below the Sun's surface.
- ❖ It is contradicting earlier studies that suggested that it was originating from about 130,000 miles below the sun's surface.



## REPORTS AND INDICES

### State and trends of carbon pricing 2024



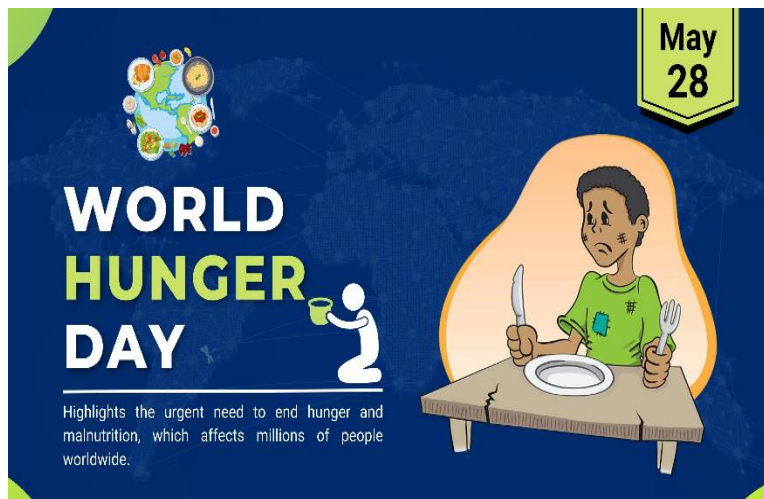
- ❖ In 2023, carbon pricing revenues reached a record \$104 billion, according to the World Bank's annual "State and Trends of Carbon Pricing 2024" report.
- ❖ According to the 2024 report, 24% of global emissions are now covered.
- ❖ There are 75 carbon taxes and emissions trading schemes in operation worldwide.

- ❖ Carbon pricing instruments cover around 24% of global emissions.
- ❖ Carbon taxes and emissions trading systems (ETSs) currently being considered could lift coverage to almost 30%.
- ❖ Large middle-income countries including Brazil, India, Chile, Colombia, and Türkiye are making strides in carbon pricing implementation.

## IMPORTANT DAYS

### World Hunger Day 2024 - May 28

- ❖ World Hunger Day was founded by The Hunger Project in 2011.
- ❖ This global initiative aims to raise awareness about the hundreds of millions of people who suffer from chronic hunger.
- ❖ 783 million people in the world are facing hunger.
- ❖ This year's theme is "Thriving Mothers. Thriving World".



### International Day of UN Peacekeepers 2024 - May 29

- ❖ This is the date when in 1948 the first UN peacekeeping mission named the "United Nations Truce Supervision Organization", or UNTSO, began operations in Palestine.
- ❖ On this day, we pay tribute to the professionalism, dedication and courage of all the men and women serving in UN peacekeeping operations, and honour the memory of those who have lost their lives in the cause of peace.
- ❖ Till date, 3,900 military, police and civilian personnel have lost their lives in the service of peace as a result of acts of violence, accidents and disease.

- ❖ UN peacekeepers come from all came with diverse cultural backgrounds and from an ever-growing number of Member States.
- ❖ The theme of 2024 is "Fit for the Future: Building Better Together."



### International Mount Everest Day 2024 - May 29

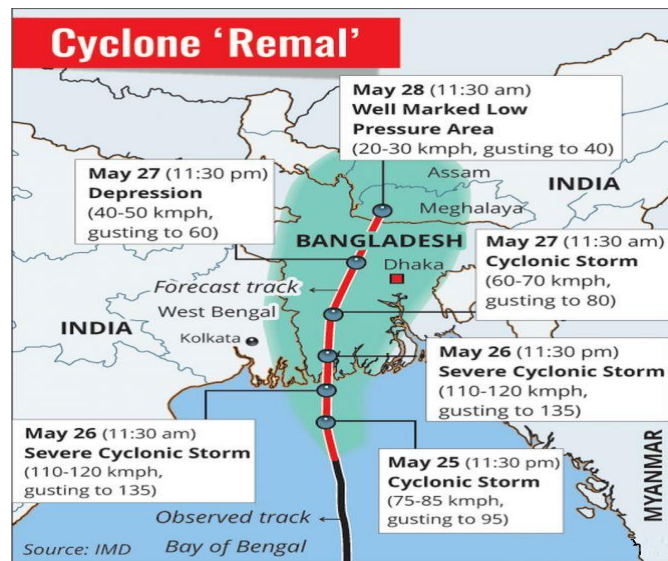


- ❖ This day commemorates the first successful ascent of Mount Everest by Sir Edmund Hillary of New Zealand and Tenzing Norgay of Nepal in 1953.
- ❖ This day was established in 2008, the year when Edmund Hillary died.

- ❖ Mount Everest is situated within the Mahalangur Himal sub-range, which is a prominent section of the Himalayas.
- ❖ The China-Nepal boundary is usually acknowledged to cross via Everest's highest point, which reaches an elevation of 8,848.86 metres.

## MISCELLANEOUS

### Cyclone Remal



- ❖ Cyclone Remal's landfall has affected the coastal areas in West Bengal and Bangladesh near the southwest of Mongla.
- ❖ It was named by Oman as per the standard convention of naming tropical cyclones in the region.
- ❖ Remal in Arabic means 'sand'.
- ❖ Cyclone Remal is the first pre-monsoon cyclone in the Bay of Bengal this season.

