

November - 07

NATIONAL

eCAPA 2019 - Art from the Heart

- ❖ India's first-ever Arts Exposition for Artists blessed with Down Syndrome, Autism, Mental Retardation, Seizure Disorder and Dyslexia held in New Delhi.
- ❖ It is a unique nationwide platform cum social venture for such artists to showcase their visual and performing arts.

Anti-Human Trafficking Units in All Districts

- ❖ The Union Government has announced setting up Anti-Human Trafficking Units (AHTU) in all districts with the help of Nirbhaya Fund.
- ❖ At present, the AHTUs are functional in 146 districts of the country.
- ❖ The Women and Child Development Minister Smriti Irani said that this will strengthen women safety and instil a greater sense of security among them.
- ❖ The Nirbhaya Fund was announced by Government of India in its 2013 Union Budget with the corpus of 1000 crores to support the initiatives of the government and the NGOs working towards the safety of women.

SCOJtEx- 2019

- ❖ Union Minister of Home Affairs inaugurated Shanghai Cooperation Organization (SCO) Joint Exercise on Urban Earthquake Search & Rescue (SCOJtEx)- 2019 in New Delhi.
- ❖ The exercise organised by National Disaster Response Force (NDRF).
- ❖ It aims to improve preparedness during disaster situation and to recognize procedures coordinating post-earthquake responses with participation of all the 8 SCO member countries.
- ❖ The exercise will be conducted as per International Search & Rescue Advisory Group (INSARAG) methodology & guidelines.

INTERNATIONAL

Regional Comprehensive Economic Partnership - RCEP

- ❖ Indian Prime Minister attended the 3rd RCEP summit in Bangkok.

- ❖ Also, the Indian government has decided not to join the Partnership, over concerns that it could lead to a potential flood of Chinese imports in the country.
- ❖ Under RCEP, India would have been required to eliminate tariffs on 74% of goods from China, Australia and New Zealand, and 90% goods from Japan, South Korea and ASEAN.
- ❖ India already has a \$57 billion trade deficit with China, which has been a major cause of concern for policymakers.

WHAT IS RCEP?

Regional Comprehensive Economic Partnership (RCEP)
is a proposed free trade agreement with **16 nations**:

10 Asean nations		6 others
Brunei	Philippines	Australia
Cambodia	Singapore	China
Indonesia	Thailand	India
Laos	Vietnam	Japan
Malaysia		South Korea
Myanmar		New Zealand



RCEP

- ❖ The RCEP is a trade deal that was under negotiation among 16 countries — the 10 member countries of the Association of Southeast Asian Nations (ASEAN), and the six countries with which the ASEAN bloc has free trade agreements (FTA).
- ❖ These included Australia, China, South Korea, Japan and New Zealand.
- ❖ It would have been the world's largest trade pact.

ECONOMY

Unemployment rate in India

- ❖ India's unemployment rate in October rose to 8.5%, the highest level since August 2016, according to data released by the Centre for Monitoring Indian Economy (CMIE).
- ❖ Among States, Tripura and Haryana saw unemployment levels of more than 20% (the highest), while the unemployment was the lowest in Tamil Nadu at 1.1%.



- ❖ The CMIE's figures are in line with the findings of the latest Periodic Labour Force Survey, which had estimated an unemployment rate of 6.1% between July 2017 and June 2018, the worst in 45 years.
- ❖ Periodic Labour Force Survey is a regular employment-unemployment survey released annually by the Ministry of Statistics & Programme Implementation since 2017.

CMIE

- ❖ Centre for Monitoring Indian Economy is a leading business information company.
- ❖ It was established in 1976, primarily as an independent think tank.

SCIENCE AND TECHNOLOGY

Oligomannate - world's first new Alzheimer's drug

- ❖ The world's first new drug for the treatment of Alzheimer's disease in nearly two decades – and perhaps the only treatment with the potential to reverse the condition – was approved by the Chinese government.
- ❖ The development of Oligomannate was inspired by the relatively low occurrence of Alzheimer's among elderly people who regularly consumed seaweed.
- ❖ At present there is no cure for Alzheimer's disease.
- ❖ It was first identified by German doctor Alois Alzheimer in 1906.

Space Technology Cell

- ❖ The Indian Institute of Technology of Delhi (IIT-D) is going to set up a space technology cell in collaboration with the Indian Space Research Organisation (ISRO).
- ❖ With the move, IIT Delhi will join the league of other premiere institutions like IISc Bangalore, IIT Bombay, IIT Kanpur, IIT Kharagpur, IIT Madras, IIT Guwahati and IIT Roorkee where the Space Technology Cells (STCs) have been set up.

ENVIRONMENT

Air Pollution in Delhi and Uttar Pradesh

- ❖ Pollution levels in Delhi and neighbouring NCR region escalated to hazardous levels.
- ❖ The visibility was dropped significantly after a thick blanket of smog engulfed.

- ❖ The air quality index (AQI) was bordering the 'severe plus' category at several places.
- ❖ In certain places it docked as high as 625.

Air Quality Index

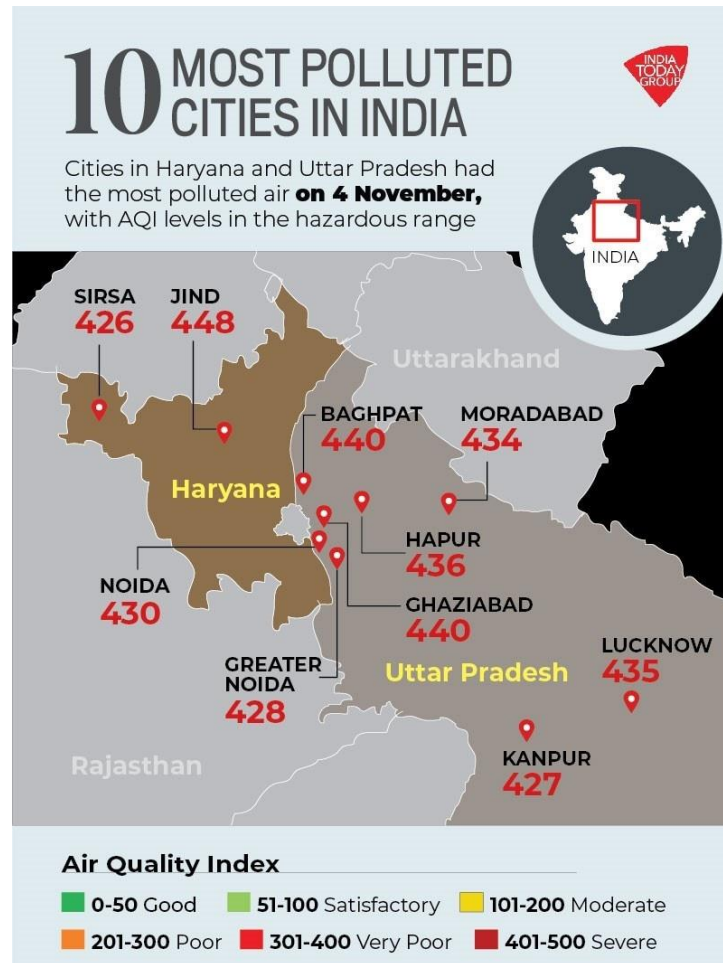
- 0-50 is considered as 'good',
- 51-100 as 'satisfactory',
- 101-200 as 'moderate',
- 201-300 as 'poor',
- 301-400 as 'very poor', and
- 401-500 as 'severe'.
- Anything above 500 comes under 'severe-plus emergency' category.

Index Value	Name	Color	Advisory
0 to 50	Good	Green	None
51 to 100	Moderate	Yellow	Unusually sensitive individuals should consider limiting prolonged outdoor exertion
101 to 150	Unhealthy for Sensitive Groups	Orange	Children, active adults, and people with respiratory disease, such as asthma, should limit prolonged outdoor exertion
151 to 200	Unhealthy	Red	Children, active adults, and people with respiratory disease, such as asthma, should avoid prolonged outdoor exertion; everyone else should limit prolonged outdoor exertion
201 to 300	Very Unhealthy	Purple	Children, active adults, and people with respiratory disease, such as asthma, should avoid outdoor exertion; everyone else should limit outdoor exertion
301-500	Hazardous	Maroon	Everyone should avoid all physical activity outdoors.

High pollution

- ❖ Six UP cities were among the top 10 most polluted places in the country with Air Quality Index (AQI) in 'severe category' (400).
- ❖ It is an alarming situation as per the Central Pollution Control Board.
- ❖ The average AQI (Air Quality Index) calculated for 24 hours (November 3, 4 pm to November 4, 4 pm) showed that Jind in Haryana had the most toxic air among 97 cities analysed.
- ❖ A total of 15 cities had an average AQI above 400.
- ❖ Of these, nine are in Uttar Pradesh and five in Haryana, apart from Delhi.
- ❖ Eight UP cities followed Jind for having the most toxic air quality.

- ❖ There are only four cities in India with 'good' air quality, of which two are in Kerala.
- ❖ Eloor, a suburb of Kochi in Kerala, recorded the best air quality with an AQI of 25.
- ❖ Eloor is followed by Thane near Mumbai (AQI 45), Thiruvananthapuram in Kerala (AQI 49) and Kota in Rajasthan (AQI 50).



SC court on Pollution

- ❖ The Apex court said that Punjab and Haryana have to extinguish fire from stubbles in agricultural fields.
- ❖ The court also sought a road-map from the Centre and the governments of Delhi, Punjab and Haryana to stop pollution on long-term.

Graded Response Action Plan (GRAP)

- ❖ It was formulated in 2016 and approved by the Supreme Court in the same year.
- ❖ When the air quality shifts from poor to very poor, the measures listed have to be followed since the plan is incremental in nature.

- ❖ If air quality reaches the severe stage, GRAP talked about shutting down schools and implementing the odd-even road-space rationing scheme.
- ❖ The plan requires action and coordination among 13 different agencies in Delhi, Uttar Pradesh, Haryana and Rajasthan.



Rice for Plastic

- ❖ Residents of Bayanan outside the capital of Manila in Philippines, residents can hand over their plastic trash in return for rice.
- ❖ The Philippines remains one of the leading marine plastic polluters.
- ❖ Over half of the plastic waste comes from just five rapidly growing economies – China, Indonesia, the Philippines, Thailand, and Vietnam.”
- ❖ According to the UN, around 300 million tonnes of plastic waste are generated every year.
- ❖ Only 9% of the plastic waste ever produced has been recycled, and today, just 14% is collected for recycling.

IMPORTANT DAYS

World Tsunami Awareness Day – November 5

- ❖ The World Tsunami Awareness Day is dedicated to promoting a global culture of tsunami awareness around the world.
- ❖ It is observed on 5 November every year.
- ❖ In December 2015, the UN General Assembly designated 5 November as World Tsunami Awareness Day.



- ❖ In the past 100 years, 58 tsunami incidents have claimed more than 2.6 lac lives, or an average of 4,600 per disaster.
- ❖ The deadliest Tsunami ever was recorded in the Indian Ocean in 26, December 2004.
- ❖ This year Tsunami Awareness Day promotes the targets of the "Sendai Seven Campaign."

