



September - 01

TNPSC BITS

- ❖ Delhi Chief Minister Rekha Gupta relaunched the iconic University Special (U-Special) bus service at the Delhi University (DU) Sports Complex, reviving a vital transport link for college students.
- ❖ The union government has approved former RBI Governor Urjit Patel's appointment as Executive Director at the IMF for three years.
- ❖ Tamil Nadu DGP Shankar Jiwai was appointed as the first chairman of the State Fire Commission, set to launch on September 1.
- ❖ The central government is working to include Chhath Mahaparva in UNESCO's Intangible Cultural Heritage list.
 - Originating in Bihar, Jharkhand, Chhattisgarh, and Nepal, Chhath Puja is a major Sun god festival.
- ❖ Israeli airstrike killed Ahmed al-Rawahi, the prime minister of Yemen's rebel-controlled government, the Iran-backed Houthi militant group.
- ❖ Telugu Language Day 2025 is observed on August 29 to commemorate the birth anniversary of poet Gidugu Venkata Ramamurthy and to promote the cultural and linguistic significance of the Telugu language.
- ❖ International Whale Shark Day 2025 is observed on August 30 to raise awareness about the conservation of whale sharks and emphasize the need to protect marine ecosystems.
- ❖ Every year on 30 August, the world observes the International Day of the Victims of Enforced Disappearances.


NATIONAL NEWS


Restructuring of the PM SVANidhi scheme


- ❖ The Union Cabinet approved the extension and restructuring of the PM SVANidhi scheme until March 31, 2030.
- ❖ The scheme was initially valid until December 31, 2024.
- ❖ It will be jointly implemented by the Ministry of Housing and Urban Affairs and the Department of Financial Services.
- ❖ Under the new structure, the first loan tranche has increased from ₹10,000 to ₹15,000.
- ❖ The second tranche has been increased from ₹20,000 to ₹25,000.


- ❖ The third tranche remains at ₹50,000.
- ❖ Scheme coverage is being expanded beyond statutory towns to census towns and peri-urban areas.
- ❖ Monthly Lok Kalyan Melas will be held to connect beneficiaries and their families with various welfare programmes.
- ❖ PM SVANidhi was launched on June 1, 2020, during the COVID-19 pandemic.
- ❖ Over 96 lakh loans worth ₹13,797 crore have been disbursed to more than 68 lakh vendors since launch.
- ❖ The scheme has received the PM's Award for Excellence in Public Administration (2023) and Silver Award for Digital Transformation (2022).

**CABINET APPROVES
RESTRUCTURING & EXTENSION
OF PM SVANIDHI* SCHEME**

 **Lending period extended
until March 31, 2030**

 **Total outlay: ₹7,332 crore**

 **Restructured scheme aims
to benefit 1.15 crore
beneficiaries, including
50 lakh new beneficiaries**



MILMEDICON-2025

- ❖ The MILMEDICON-2025, an international conference on trauma in military settings, organised by the Directorate General of Medical Services (Army) in New Delhi.
- ❖ The conference aims to enhance trauma care in military operations and strengthen international medical cooperation.
- ❖ MILMEDICON-2025 also marks 100 years of the Military Nursing Service, celebrating the legacy and contributions of women in military medical care.



Organised by DGMS (Army) at
Manekshaw Centre, New Delhi

Theme: International Conference on Physical
& Mental Trauma in Military Settings

Focus: Innovations, challenges & reforms
in military medicine

Aligned with Indian Army's Year of Reforms

NARI 2025



- ❖ The report, National Annual Report and Index (NARI) surveyed 12,770 women across 31 cities and assigned a national safety score of 65 percent.
- ❖ Kohima, Visakhapatnam, Bhubaneswar, Aizawl, Gangtok, Itanagar, and Mumbai were ranked as the safest cities for women.
- ❖ Patna, Jaipur, Faridabad, Delhi, Kolkata, Srinagar, and Ranchi were identified as the least safe cities.
- ❖ 40 percent of women surveyed rated themselves as feeling 'not so safe' or 'unsafe' in their city.

- ❖ 86 percent of women reported feeling safe in educational institutions during daytime hours.
- ❖ 91 percent of women felt safe at their workplace, but over 50 percent were unsure about POSH (Prevention of Sexual Harassment) policy enforcement.
- ❖ In 2024, 7 percent of women reported facing harassment in public spaces, increasing to 14 percent among women under 24.
- ❖ Only one in three women who faced harassment filed a complaint.

INTERNATIONAL NEWS

Ukraine's top diesel supplier



- ❖ India has overtaken other suppliers to become Ukraine's largest source of diesel in July 2025, accounting for 15.5 per cent of imports.
- ❖ Daily shipments averaged 2,700 tonnes, among India's highest monthly export figures this year.
- ❖ In July 2024, India supplied just 1.9 per cent of Ukraine's diesel needs.

Punatsangchhu-II Hydroelectric Project

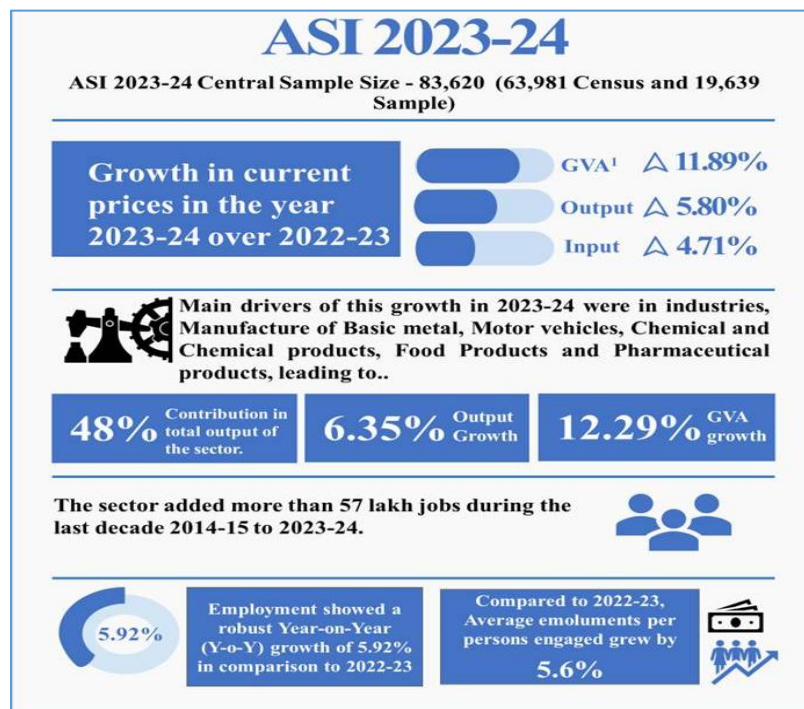
- ❖ Bhutan completed the 1020 MW Punatsangchhu-II Hydroelectric Project located in the Punatsangchhu river basin.
- ❖ The final unit was synchronized to the power grid, increasing Bhutan's total power capacity by about 40% to over 3500 MW.

- ❖ India and Bhutan have jointly developed five major hydropower projects, including Punatsangchhu-II.



ECONOMY NEWS

Annual Survey of Industries 2023-24



- ❖ The Ministry of Statistics and Programme Implementation released the Annual Survey of Industries (ASI) 2023-24 covering the period April 2023 to March 2024.
- ❖ Gross Value Added (GVA) at current prices increased by 11.89 percent in 2023-24 over 2022-23, reaching ₹24,58,33,605 lakh.




- ❖ Industrial output rose by 5.80 percent in 2023–24, with total output valued at ₹1,53,27,16,609 lakh.
- ❖ Total employment in the sector increased by 5.92 percent, rising to 1,95,89,131 persons in 2023–24.
- ❖ Between 2014–15 and 2023–24, the sector added over 57 lakh new jobs.
- ❖ Basic metals contributed 11.56 percent to total GVA, the highest among all industry groups.
- ❖ Tamil Nadu, Gujarat, Maharashtra, Uttar Pradesh, and Karnataka were the top five states in terms of total employment.
- ❖ Maharashtra led in Gross Value Added with a share of 15.95 percent, followed by Gujarat and Tamil Nadu.
- ❖ Gujarat had the highest share of fixed capital at 19.53 percent of the national total.
- ❖ The total number of factories reported in ASI 2023–24 was 2,60,061.
- ❖ The share of contract workers to total workers increased to 0.42 in 2023–24.
- ❖ The fixed capital to Net Value Added ratio remained at 2.20, indicating capital efficiency.
- ❖ The top five states by number of factories were Tamil Nadu, Gujarat, Maharashtra, Uttar Pradesh, and Andhra Pradesh.
- ❖ The top five states by fixed capital were Gujarat, Maharashtra, Tamil Nadu, Odisha, and Karnataka.
- ❖ The top five states by gross output were Gujarat, Maharashtra, Tamil Nadu, Haryana, and Uttar Pradesh.
- ❖ The top five states by GVA were Maharashtra, Gujarat, Tamil Nadu, Karnataka, and Uttar Pradesh.
- ❖ The top ten industries contributed 71 percent of the total manufacturing Gross Value Added.
- ❖ The top five states accounted for about 54 percent of the manufacturing Gross Value Added and 55 percent of total employment.

Cotton Import Duty Exemption

- ❖ The Government of India has extended the exemption on the 11 percent import duty on all varieties of cotton till 31 December 2025.
- ❖ The decision was notified by the Central Board of Indirect Taxes and Customs (CBIC).
- ❖ The move aims to stabilise input costs across the entire textile value chain.

- ❖ Cotton textile exports made up 33 percent of total textile and apparel exports in April to October 2024–25.
- ❖ These exports were valued at USD 7.08 billion during the same period.
- ❖ India consumes 95 percent of its cotton production domestically in the textile industry.
- ❖ Over 45 million people are employed across the textile-apparel value chain.

Import woes		Cotton and raw cotton imports (in \$ million)		
An increase in the import of cotton in the last two years has brought to fore the urgent need for measures to improve cotton productivity in India		Month	2023	2024
		January	28.99	19.62
		February	34.69	31.43
		March	55.01	48.8
		April	45.3	37.91
		May	58.09	43.88
		June	95.1	70.22
		July	88.72	86.29
		August	74.9	104.89
		September	39.91	134.2
		October	36.68	127.71
		November	30.61	170.73
		December	29.47	142.89
		Month	2024	2025
		January	19.62	184.64

System of National Accounts (SNA) 2025

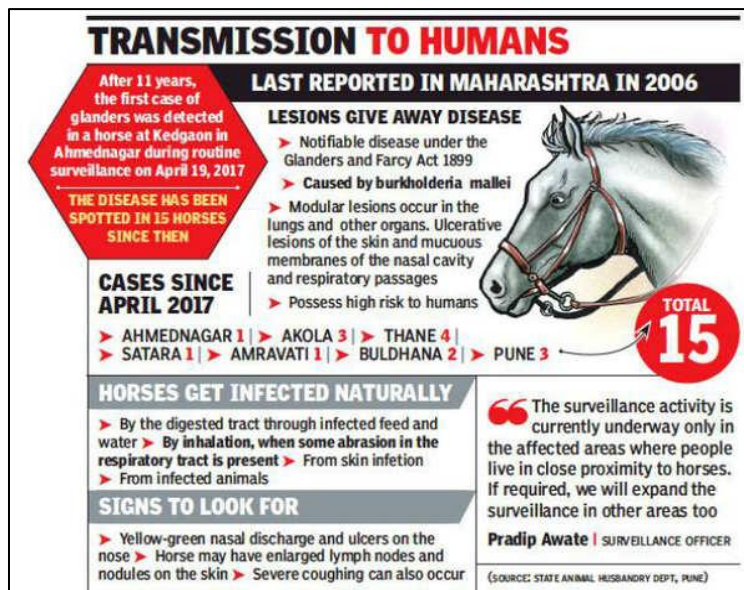


- ❖ The System of National Accounts 2025 is a revised international framework replacing SNA 2008.
- ❖ It was aiming to go beyond GDP by integrating sustainability, inequality, and unpaid work.

- ❖ It is adopted by the UN Statistical Commission.
- ❖ SNA 2025 enables targeted welfare, gender-sensitive policies, and sustainable economic planning by aligning growth metrics with fairness and ecological balance.

SCIENCE AND TECHNOLOGY NEWS

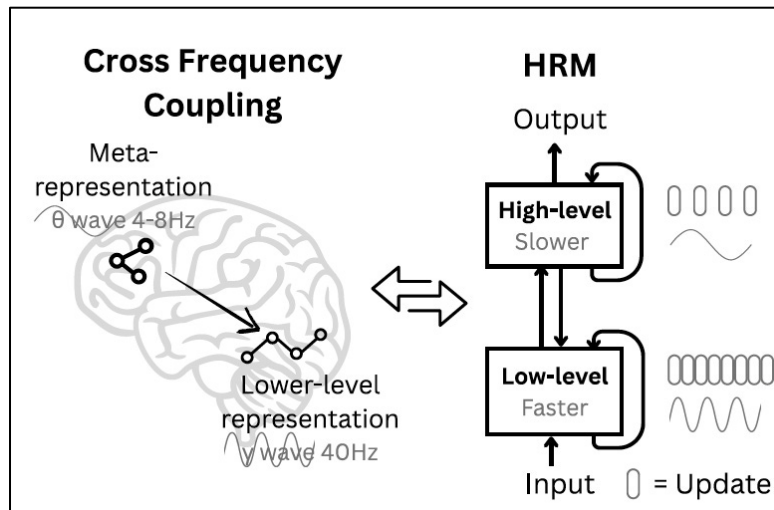
Eradication Plan on Glanders



- ❖ The Department of Animal Husbandry and Dairying issued the revised National Action Plan on Glanders.
- ❖ The revised plan emphasizes animal health security, One Health preparedness, and protecting equine-dependent livelihoods.
- ❖ The plan will be implemented in coordination with State Governments, veterinary universities, and ICAR institutes.
- ❖ Glanders is a contagious and often fatal disease affecting horses, mules, and donkeys.
- ❖ The infected zone has been reduced from 5 kilometers to 2 kilometers.
- ❖ The surveillance area is now defined as 2 to 10 kilometers, down from 5 to 25 kilometers.
- ❖ Restrictions related to glanders now apply only up to 10 kilometers from affected sites.
- ❖ Mandatory testing of equines in endemic and high-risk areas has been introduced.

- ❖ Standard Operating Procedures are established for rapid containment, isolation, and humane handling of positive cases.
- ❖ Glanders is caused by *Burkholderia mallei* and is notifiable under the Prevention and Control of Infectious and Contagious Diseases in Animals Act, 2009.

Hierarchical Reasoning Model (HRM)



- ❖ Scientists have developed a new artificial intelligence model called the Hierarchical Reasoning Model (HRM).
- ❖ HRM is inspired by the hierarchical and multi-timescale processing of information in the human brain.
- ❖ The model uses only 27 million parameters and 1,000 training samples.
- ❖ HRM scored 40.3 percent in the ARC-AGI-1 benchmark, a test for Artificial General Intelligence (AGI).
- ❖ The model avoids Chain-of-Thought (CoT) reasoning and instead uses sequential reasoning with iterative refinement for improved accuracy.

IMPORTANT DAYS

International Day Against Nuclear Tests 2025 - August 29

- ❖ The United Nations designated the day to commemorate the victims of nuclear testing.
- ❖ The first International Day Against Nuclear Tests was observed in 2010.
- ❖ The day aims to raise awareness about the harmful effects of nuclear tests.



- ❖ The day also emphasizes the role of the Comprehensive Nuclear-Test-Ban Treaty (CTBT) in global peace.

