

March – 12

TNPSC BITS

- ❖ The Prime Minister announced that Prasar Bharati has brought 11 more State DD Channels on the Satellite footprint of India through 'DD Free Dish'.
 - These 11 channels include five from North Eastern states.
- ❖ The President of India conferred the Padma Awards 2019, one of the highest civilian awards of India to 112 awardees on March 11, 2019.
- ❖ New visa agreement between India and Maldives, which providing a liberal visa policy for Maldivian citizens seeking medical treatment as well as education and business opportunities in India, came into force on March 11, 2019.
- ❖ Mohammad Shtayyeh was named as the new Prime Minister of Palestine by the President of Palestinian Authority Mahmoud Abbas.

NATIONAL

National Mission on Transformative Mobility and Storage

- ❖ The Union Cabinet approved setting up of a National Mission on Transformative Mobility and Battery Storage.
- ❖ It aims to drive clean, connected, shared, sustainable and holistic mobility initiatives.
- ❖ This is a multi-disciplinary mission with an Inter-Ministerial Steering Committee which will be chaired by NITI Aayog CEO.
- ❖ It will recommend and drive the strategies for transformative mobility and Phased Manufacturing Programmes for Electric Vehicles, Electric Vehicle Components and Batteries.

India Urban Observatory & Video Wall

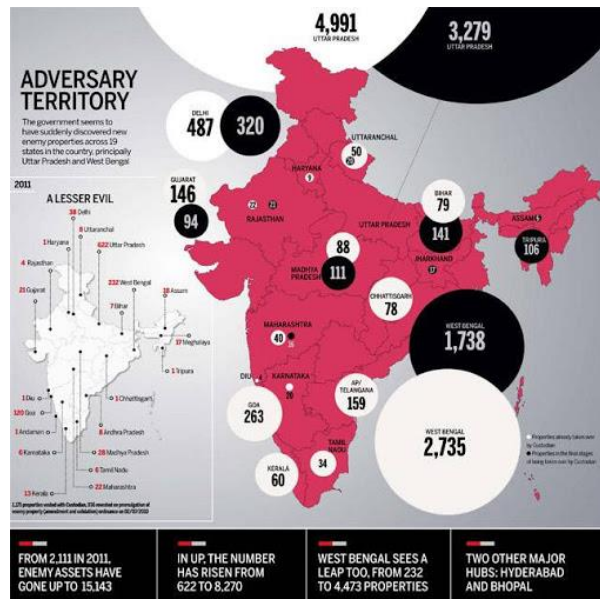
- ❖ The Ministry of Housing and Urban Affairs has launched the state-of-the-art India Urban Observatory and Video Wall.
- ❖ It is an important component of the recently launched Data Smart Cities strategy that envisions creating a 'Culture of Data' in cities, for intelligent use of data in addressing complex urban challenges.

- ❖ The concept of Urban Observatories was formally initiated at the UN Habitat-II Conference in 1997 in Istanbul, Turkey.



Enemy Properties in India

- ❖ The Central government has allowed the state governments to put enemy properties into public use.
- ❖ Enemy properties are the properties of people who migrated to Pakistan during partition and who left to China after the India- Sino war in 1962.



- ❖ The Enemy Property Act was enacted in 1968 and it regulates such properties and lists the custodian's powers.

- ❖ This act was amended in 2017 to ensure that the successors of the migrated people will have no claim over the properties left behind in India.
- ❖ Uttar Pradesh has the maximum number of enemy properties of Pakistani nationals.
- ❖ Meghalaya has the highest number of properties of those who took Chinese citizenship.
- ❖ Similarly, Rs.3,000 crores worth Enemy shares are under the custody of the Custodian of Enemy Property for India.

INTERNATIONAL

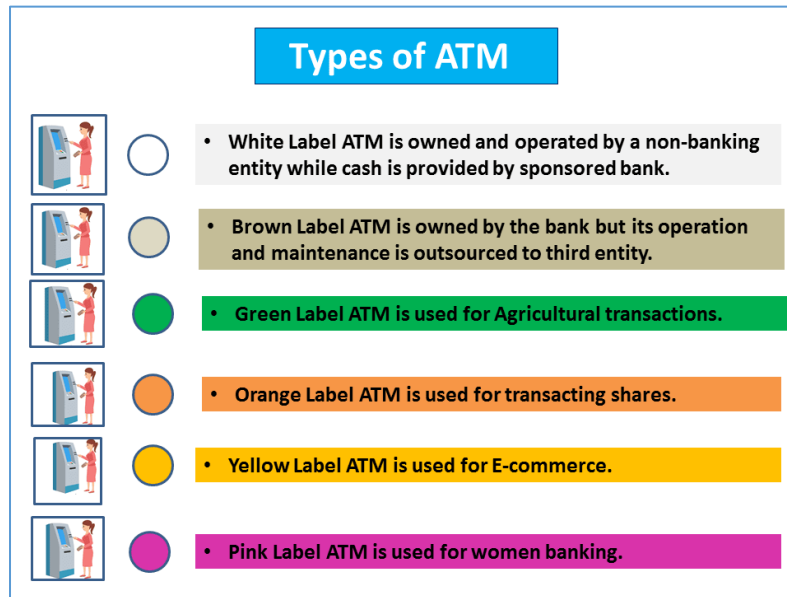
Third IT corridor in China

- ❖ India launched its third IT corridor in China to facilitate partnerships between the Indian and Chinese companies.
- ❖ The National Association of Software and Services Companies (NASSCOM) entered into a partnership with China's Xuzhou city from Jiangsu Province in China to help for the development of the IT corridor.
- ❖ The corridor will facilitate match-making between Indian companies wanting to collaborate with companies in China.
- ❖ The earlier two corridors are at Dalian and Guiyang cities.

ECONOMY

Guidelines for White Label ATMs

- ❖ The Reserve Bank of India (RBI) has come up with a review of operations of White Label ATMs (WLAs) in the country.
- ❖ Automated Teller Machines (ATMs) set up, owned and operated by non-bank entities are called "White Label ATMs" (WLAs).
- ❖ They provide the banking services to the customers of banks in India, based on the cards (debit/credit/prepaid) issued by banks.



SCIENCE AND TECHNOLOGY

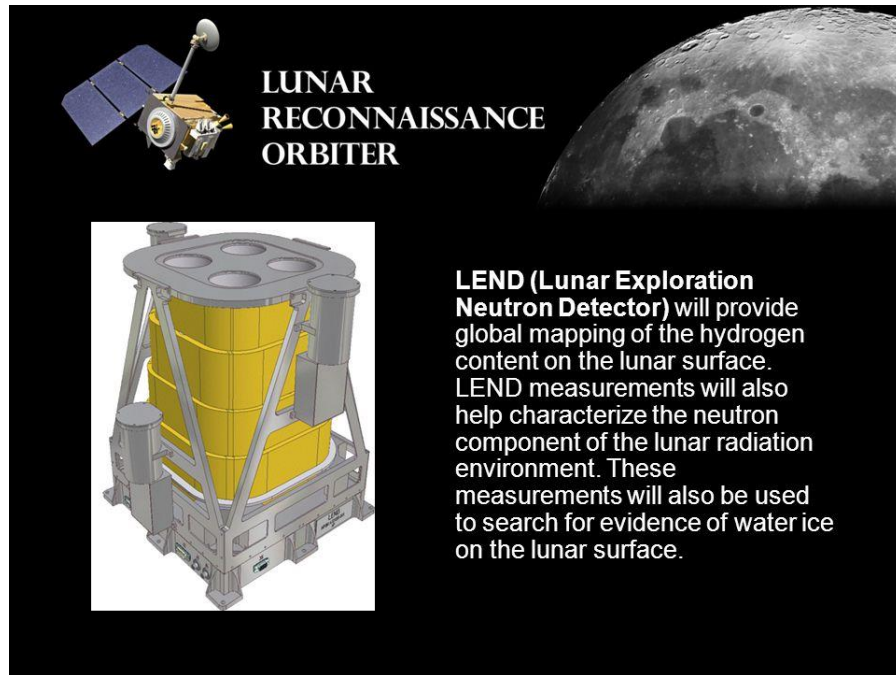
Combat drugs

- ❖ The Defence Research and Development Organisation's (DRDO) medical laboratory came up with a range of 'combat casualty drugs' to reduce casualties in warfare like Pulwama terror attack.
- ❖ It includes bleeding wound sealants, super absorptive dressings and glycerinated salines that can save lives in the event of warfare in the jungle and high-altitude areas.
- ❖ According to developers of the drugs, chances of survival and minimum disability are highest when effective first aid care is given within the golden hour.

Water Molecules on Moon

- ❖ NASA spacecraft Lunar Reconnaissance Orbiter (LRO) has observed water molecules moving around the dayside of the Moon.
- ❖ Until the last decade, scientists thought that the Moon was arid, with any water existing.
- ❖ Lyman Alpha Mapping Project (LAMP), the instrument aboard LRO has measured sparse layer of molecules temporarily stuck to the Moon's surface.

- ❖ Lunar water can potentially be used by humans to make fuel or to use for radiation shielding or thermal management.



ENVIRONMENT

Clownfish hatchery

- ❖ National Bureau of Fish Genetic Resources (NBFGR) has launched a new project in coastal Maharashtra which aims to train villagers in the clownfish trade.
- ❖ Clownfish or anemonefish are most widely used in aquariums. These fishes form symbiotic mutualisms with sea anemones.
- ❖ This clownfish hatchery, the first of its kind is to be set up in Mumbai.
- ❖ It will help the villagers set up a clownfish trade business.
- ❖ Clownfish were also brought from Tamil Nadu, Andaman Islands, and Lakshadweep.

Ocean Heat-waves

- ❖ Number of heat wave days jumped by more than 50 percent in the 30 years to 2016, compared with the period of 1925 to 1954.

- ❖ As heat waves have increased, kelp forests, seagrass meadows, and coral reefs have been lost.
- ❖ Heat-waves induced wild fires also, that take out huge areas of forest.
- ❖ 10-week marine heat-wave near Western Australia in 2011 shattered an entire ecosystem and permanently pushed commercial fish species into colder waters.

STATES

Reform and Rehabilitation for J & K Militants

- ❖ J & K Government is drafting a policy to reform and rehabilitate the militants.
- ❖ According to the draft, the new initiative addresses the need for rehabilitation at a policy level through a two-pronged approach such as
 - Reformative measures and
 - Opportunities of livelihood.
- ❖ There is provision of monthly stipend of Rs.6,000 to a militant who surrenders and joins the mainstream of the society.
- ❖ These initiatives and provisions however do not cover militants who have done heinous crimes.
- ❖ State Administrative Council (SAC) will implement these draft recommendations, subject to clearance from the State Home Department and the Chief Secretary.
- ❖ SAC is led by the Governor and includes his four advisors and Chief Secretary.

MISCELLANEOUS

Monster Salary Index Report

- ❖ Monster Salary Index survey has been prepared and released by Monster India in collaboration with Paycheck.in with IIM-Ahmedabad as a research partner.
- ❖ The survey is titled 'Women of India Inc'.

Important findings:

- ❖ Women in India earn 19% less than their male counterparts and 60% working women in India feel that discrimination at work.
- ❖ Sector-wise, IT/ITES services show 26 percent pay gap in favour of men, followed by manufacturing sector, where men earned 24 per cent more than women.



- ❖ In healthcare, caring services, and social work men earn 21% more than women, while Banking and Insurance is the only industry where men earn just 2 % more.
